

Giant among giants—a mammoth Sequoia in General Grant Park, California

American Tree Monarchs

AFA revises and brings up to date its report on big tree champions. 291 species are included in 1951 list

AMERICAN FORESTS presents herewith the complete 1951 revised report on the status of America's tree champions. The third published by The American Forestry Association since the big tree campaign was launched in 1940, the new report is in response to numerous queries, requests and submissions by tree lovers throughout the nation concerning latest available figures on these forest sovereigns.

Tree champions, like their human counterparts, sometimes wear uneasy crowns. They are likely to be dethroned by a more massive competitor, are subject to the ravages of disease, to the elements or to thoughtless commercialism. Occasionally they have achieved eminence through mistaken identity or location. Consequently, any listing of the tree world's "best of class" is constantly subject to addition and revision and use of the word champion is in the strictest sense unofficial.

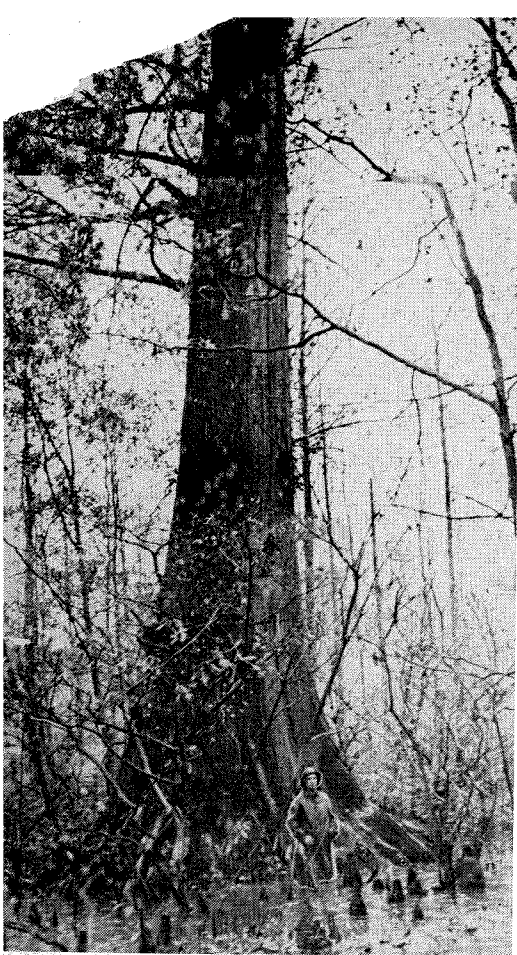
It is recognized also that figures on some of the specimens in this report are not current because a re-measurement may not have been taken since 1946 when the Association compiled and published its last report on big trees. Data is the latest available before going to press. Com-

mon and botanical names listed conform to *Standardized Plant Names*, a book issued by the American Joint Committee on Horticultural Nomenclature. Identification and measurements are by the nominators.

Going into its twelfth year, the Association's campaign to locate and preserve the largest specimens of American trees is still a flourishing movement. Launched in 1940 to halt the tragic disappearance of these magnificent trees, the program has attracted wide participation and has focused attention on the incalculable benefits of conserving these cherished natural landmarks for this and future generations.

The search for big trees is more than just a contest. It is more than

DETERMINATION OF bigness in trees listed is based on the sum of dimensions of circumference, height and spread. To the total inches of stem circumference (four and a half feet above ground) is added the total height in feet plus one-quarter of the crown spread footage. This gives a single figure denoting aggregate growth, with circumference as No. 1 factor, followed by the height and crown spread.



Tennessee is the home of 140-foot-high patriarch of Baldcypress species

just a temporary gesture toward conservation of something that is the finest of its kind. While the search is in a sense competitive it is also co-operative and by that very fact becomes more of a nationwide project than a localized vying for honors. Nor is the search a temporary gesture, because the efforts behind it are continuous and the benefits received may well run into the centuries to come. The lives of some trees are measured in the thousands of years.

Champion American Beech



If you know of a tree of the same species larger than the one reported here make it your business to see that its full and accurate record is sent to The American Forestry Association. Include its identity as to species, its circumference four and a half feet above the ground, its estimated height and spread, its state of preservation, and, particularly, its location and ownership. Also, be sure to send a photograph of the tree.

This big tree campaign is not to be confused with the Association's Hall of Fame project which was inaugurated in 1920 after widespread planting of memorial trees (in which the Association also had taken the initiative) had made more people tree conscious. In nominating a candidate for the Hall of Fame, size has no particular significance. Only those trees authentically connected with history such as "The Charter Oak" at Hartford, Connecticut and "The Treaty Oak" at Washington, D. C. are given recognition.

The 1951 roster of big tree champions includes 291 species in 89 different groups. This is an increase of 42 species and nine groups over the listing made in 1946. The nine groups not previously reported are Ailanthus, Blueberry, Buffaloberry, Bumelia, Chinaberry, Crapemyrtle, Devils-Walkingstick, Soapberry and Yucca. These superior specimens are found in all sections of the country—the South, the West Coast, the Pacific Northwest, the Midwest, the Eastern Seaboard.

Forty-four states and the District of Columbia are growers of champion trees. Maryland and California, each with 33, share top honors for the most champions. Oregon is chal-

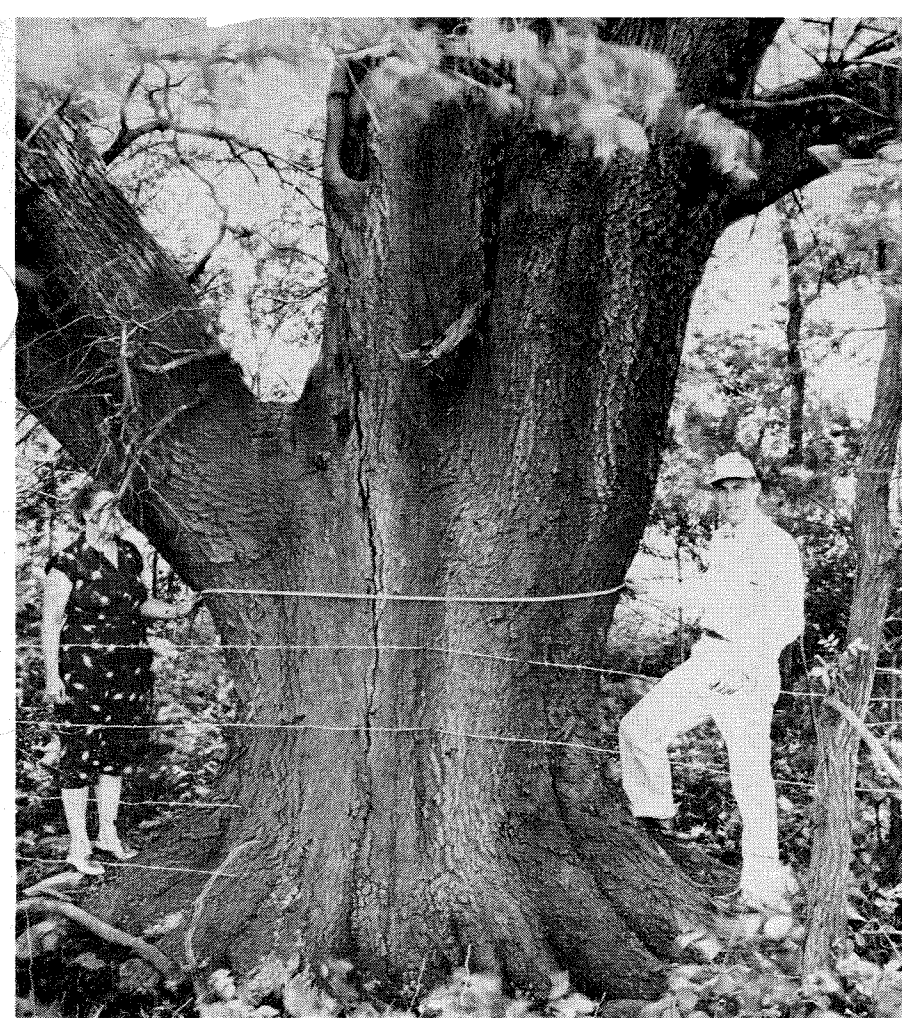
lenging the leaders with 25 top entries.

Five other states—Tennessee, Missouri, Illinois, Pennsylvania and Washington are each the homes of more than ten trees with No. 1 ranking. The 195 champions growing in the "big ten" states comprise 67 percent of the total number of biggest trees. Sharing the dubious distinction of fostering no tree champions are Minnesota, Rhode Island, North Dakota and Vermont.

A total of 128 nominators enjoy the honor of having their candidates placed at the top of the list. Champions were selected from a whopping total of more than a thousand nominations. The undisputed discovery title is held by Kendall Laughlin of Chicago who has located and reported 47 champions. Oliver V. Matthews of Salem, Oregon has nominated 26 winners and ranks as the leading challenger for Mr. Laughlin's title. In third place is F. W. Besley of Laurel, Maryland. He has submitted 25 champions. Dr. S. Glidden Baldwin, a Danville, Illinois tree lover, has 23 leaders to his credit.

It is significant to note that these four top nominators, while having accounted for 121 (more than 41 percent) of the total of 291 champions, are not actively engaged in forestry but pursue the study of trees more as a hobby or avocation. Mr. Laughlin is a naturalist and author of a pamphlet on midwest big trees published in 1947; Mr. Matthews is a writer who has prepared bulletins on Oregon's trees; Mr. Besley, "dean of state foresters" and for 18 years a director of AFA, retired in 1942 as state forester of Maryland; and Dr.

Largest wild Black Cherry spreads 77 feet



This Pin Oak champion is located near Lawrenceville, New Jersey

Baldwin is a medical specialist, naturalist and a member of a botanical photo club.

Others who have been prominent in the campaign are H. H. Arnold, professor in the department of romance languages, Pennsylvania State College; Karl E. Pfeiffer, assistant director, Maryland Department of Forests and State Parks; T. J. Starker, private consulting forester of Corvallis, Oregon; Ernest H. Van Fossan, judge of the Tax Court of the U. S., Washington, D. C.; and Joseph L. Stearns, assistant director of research, Timber Engineering Company, Washington, D. C., a key figure in the launching of the big tree search in 1940.

Twenty-eight nominators have reported two or more champions and 93 have reported one each.

There are all kinds and shapes of tree champions. There are the dwarf-like "flyweights" which measure less than one foot in circumference, the "middleweights" ranging upward from 50 feet in circumference and the mighty "heavyweights" with a girth of more than 100 feet.

The giant among tree giants is a titanic Sequoia—the General Sherman—growing in Sequoia National Park in California. Measuring 101 feet and six inches at the base and

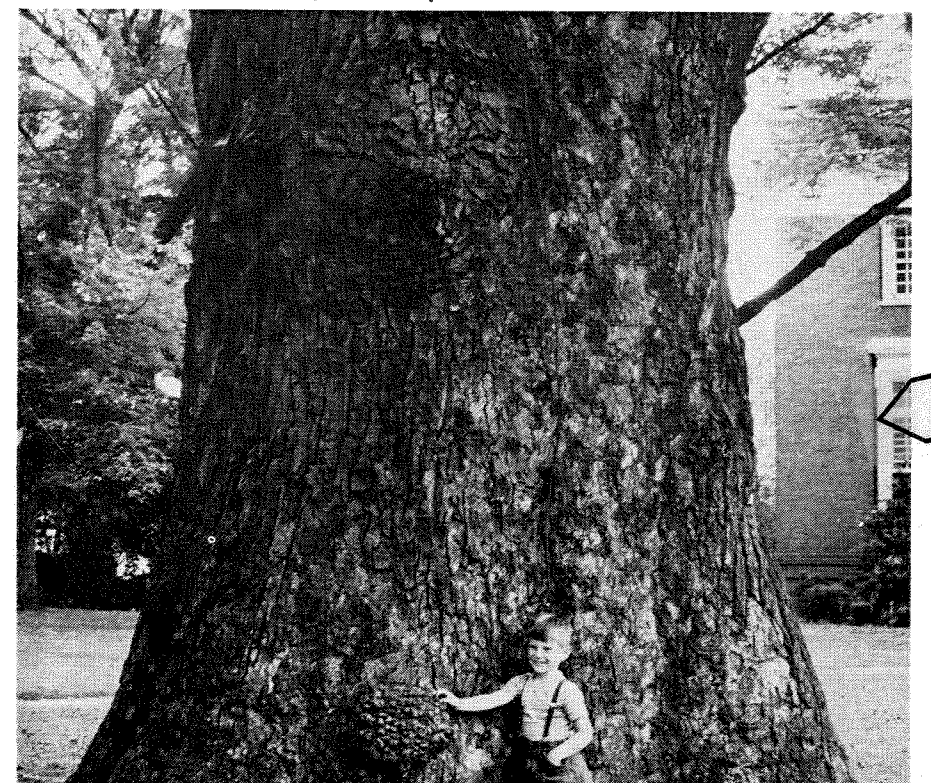
parison with the magnificent General Sherman. This buckthorn (*Rhamnus frangula*) is only seven inches in circumference and stands 12 feet high. This means the General Sherman is 174 times as big around and nearly 23 times as high as the smallest big tree. Mr. Laughlin is the nominator of the diminutive buckthorn.

Imagine a tree as tall as a football field is long. It sounds fantastic, but it's a fact. The towering monarch that proves it is the redwood (*Sequoia sempervirens*) located at Maple Creek, Humboldt County, California which has attained the tremendous height of 308 feet. Emanuel Fritz of Berkeley, California nominated this winner. He reported its circumference as 62 feet, eight inches.

The live oak (*Quercus virginiana*) doesn't take any honors in the height division but when it comes to spread it's in a class by itself. Charles Gennella of New Orleans nominated this massive specimen with a spread of 168 feet. It is located near Hahnville, Louisiana, has a circumference of 35 feet and is 78 feet tall.

One of the great champions to be toppled from its throne was a Baldcypress, the Senator Overstreet, located at Longwood, Florida. The new titleholder grows in Weakley County, Tennessee and tops the Florida favorite by 14 feet in height and nearly 20 feet in circumference. The Tennessee titan is 140 feet high, 61 feet, four inches in girth, and has a spread of 50 feet. James H. Thomas of Hazel, Kentucky is the nominator.

Maryland Tuliptree is best of class



REPORT ON AMERICAN BIG TREES

In September 1940, The American Forestry Association launched a campaign to locate the largest living specimens of American trees. After ten years of diligent search by cooperating individuals, the following list of "champions" are on record as of October 31, 1951. Common and botanical names listed conform to "Standardized Plant Names" issued by the American Joint Committee on Horticultural Nomenclature. Identification and measurements are by nominators. The challenge is to locate trees larger than those listed, if they exist, and also giants of species not listed. Send all reports to The American Forestry Association, 919 Seventeenth Street, N. W., Washington 6, D. C.

Species	Circumference at 4 1/2 feet	Spread	Height	Location of Tree and Nominator
AILANTHUS				
Tree of Heaven, <i>Ailanthus altissima</i>	17'10"	64'	82'	Cheston-on-Wye, Queen Anne County, Maryland. F. W. Besley, Laurel.
ALDER				
Red, or Oregon, <i>Alnus rubra</i>	6'8"	---	---	Near Corvallis, Oregon. T. J. Starker, Corvallis.
Seaside, <i>Alnus maritima</i>	2'11"	30'	55'	Rock Creek Park, Washington, D. C. Ernest H. Van Fossan, Washington, D. C.
Sierra, or White, <i>Alnus rhombifolia</i>	9'9"	---	---	Salem, Oregon. Oliver V. Matthews, Salem.
Sitka, <i>Alnus sinuata</i>	1'2"	---	---	Saddle Mountain State Park, Clatsop County, Oregon. Oliver V. Matthews, Salem.
Speckled, (American) <i>Alnus incana</i>	1'6"	15'	34'	Dunes State Park, Indiana. Kendall Laughlin, Chicago, Illinois.
ARBORVITAE				
Eastern, or Northern Whitecedar, <i>Thuja occidentalis</i>	15'6"	50'	125'	Natural Bridge, Virginia. F. C. Penderson (Deceased).
Giant, or Western Redcedar, <i>Thuja plicata</i>	62'8"	---	100'	Olympic National Park, Washington. F. W. Mathias, Hoquiam.
ASH				
American Mountain— <i>Sorbus americana</i>	5'6"	---	---	Great Smoky Mountain National Park, Tennessee. S. Glidden Baldwin, Danville, Illinois.
Black, <i>Fraxinus nigra</i>	6'	24'	37'	Billy Caldwell's Reserve, Chicago, Illinois. Kendall Laughlin, Chicago.
Blue, <i>Fraxinus quadrangulata</i>	10'3"	62'	116'	Funk's Grove, Illinois. Kendall Laughlin, Chicago.
Green, <i>Fraxinus pennsylvanica lanceolata</i>	12'2"	75'	62'	Robinson Woods, Cook County, Illinois. Kendall Laughlin, Chicago.
Oregon, <i>Fraxinus oregona</i>	18'	---	---	Near Burlington, Oregon. T. J. Starker, Corvallis.
Red, <i>Fraxinus pennsylvanica</i>	8'10"	44'	66'	Riverside Woods, Cook County, Illinois. Kendall Laughlin, Chicago.
Velvet, <i>Fraxinus velutina</i>	5'4"	46'	44'	Twin Falls, Idaho. Harold C. Hallock, Twin Falls.
White, <i>Fraxinus americana</i>	21'	90'	98'	Glenn Mills, Pennsylvania. S. G. Baldwin, Danville, Illinois.
Common Prickly-, <i>Zanthoxylum americanum</i>	1'4" (base)	---	30'	Homochitto National Forest, Mississippi. Herbert P. Rice, Rolling Fork.
Herculesclub Prickly-, <i>Zanthoxylum clava-herculis</i>	4'4" (base)	---	50'	Homochitto National Forest, Mississippi. Herbert P. Rice, Rolling Fork.
ASPEN				
Bigtooth, <i>Populus grandidentata</i>	6'7"	36'	70'	Shiawassee Township, Michigan. Elton C. Twork, Mason.
Quaking, <i>Populus tremuloides</i>	9'10"	---	76'	Cedar Mountain, Utah. James D. Curtis, Idaho City, Idaho.
BALDCYPRESS				
Common, <i>Taxodium distichum</i>	61'4"	50'	140'	Middle fork of Obion River, Weakley County, Tennessee. James M. Thomas, Hazel, Kentucky.
BEECH				
American, <i>Fagus grandifolia</i>	16'7"	80'	75'	Near Morrisville, Pennsylvania. Paul H. Fluck, Lambertville, New Jersey.
Carolina, <i>Fagus grandifolia caroliniana</i>	12'10"	---	126'	West Feliciana Parish, Louisiana. Lazella Schwarten, Jamaica Plain, Massachusetts.
BIRCH				
Gray, <i>Betula populifolia</i>	4'3"	31'	58'	Near Catonsville, Maryland. F. W. Besley, Laurel.
Paper, or White, <i>Betula papyrifera</i>	18'	---	---	Hog Back Mountain, East Northfield, Massachusetts. William Wharton, Groton.
River, or Red, <i>Betula nigra</i>	12'4"	72'	98'	Near Odenton, Maryland. Fred W. Besley, Laurel, Maryland.
Sweet, or Black, <i>Betula lenta</i>	10'10"	60'	60'	Great Smoky Mountain National Park, Tennessee. S. Glidden Baldwin, Danville, Illinois.
Water, <i>Betula fontinalis</i>	1'10"	---	---	Near Warm Springs River, Wasco County, Oregon. Oliver V. Matthews, Salem.
Yellow, <i>Betula lutea</i>	14'1"	64'	90'	Great Smoky Mountain National Park, Tennessee. S. Glidden Baldwin, Danville, Illinois.

Species	Circumference at 4 1/2 feet	Spread	Height	Location of Tree and Nominator
BLUEBERRY				
Tree Sparkleberry, <i>Vaccinium arboreum</i>	1'4"	13'	15'	Burnham Mountain, Glenwood, Arkansas. Kendall Laughlin, Chicago, Illinois.
BOXELDER				
<i>Acer negundo</i>	19'11"	102'	75'	White Plains, New York. George H. White, Kent, Ohio.
BUCKEYE: HORSECHESTNUT				
California, <i>Aesculus californica</i>	12'9"	40'	35'	Olema, California. R. H. Menzies, San Francisco.
Common, <i>Aesculus hippocastanum</i> <i>Spitic</i>	12'6"	63'	63'	Near Cumberland, Maryland. Karl E. Pfeiffer, Annapolis.
Ohio, <i>Aesculus glabra</i>	8'1"	60'	90'	Elyria, Ohio. O. E. Files, Toledo.
Yellow, <i>Aesculus octandra</i>	15'11"	54'	85'	Great Smoky Mountain National Park, Tennessee. S. Glidden Baldwin, Danville, Illinois.
BUCKTHORN				
Carolina, <i>Rhamnus caroliniana</i>	9"	---	---	Gatlinburg, Tennessee. S. Glidden Baldwin, Danville, Illinois.
Cascara, <i>Rhamnus purshiana</i>	9'5"	---	60'	Near Rockport, Washington. T. J. Starker, Corvallis, Oregon.
Common, <i>Rhamnus cathartica</i>	4'6"	34'	32'	Pennsylvania State College, Pennsylvania. H. H. Arnold, State College.
Glossy, <i>Rhamnus frangula</i>	7"	9'	12'	Chechupinqua Woods, Cook County, Illinois. Kendall Laughlin.
BUFFALOBERRY				
Silver, <i>Shepherdia argentea</i>	2'7"	18'	18'	Near McDermitt, Nevada. Oliver V. Matthews, Salem, Oregon.
BUMELIA				
Buckthorn, <i>Bumelia lycioides</i>	3'7"	30'	40'	Near Vulcan, Missouri. George O. White, Jefferson City.
Gum, <i>Bumelia lanuginosa</i>	2'8"	23'	26'	Meramec State Park, Missouri. Kendall Laughlin, Chicago, Illinois.
BUTTERNUT; WHITE WALNUT				
<i>Juglans cinerea</i>	9'	70'	110'	Grover, Taylor County, Wisconsin. Ralph C. Bangsburg, Perkinstown.
BUTTONBUSH				
Common, <i>Cephalanthus occidentalis</i>	1'8"	16'	12'	Near Lisle, Illinois. Kendall Laughlin, Chicago.
CATALPA				
Northern, <i>Catalpa speciosa</i>	17'10"	73'	58'	Near Ellicott City, Maryland. F. W. Besley, Laurel.
CEDAR				
Eastern Red— <i>Juniperus virginiana</i>	13'4"	42'	62'	Cumberstone, Queen Anne County, Maryland. F. W. Besley, Laurel.
California Incense-, <i>Libocedrus decurrens</i>	36'	---	---	Rogue River National Forest, California. Oliver V. Matthews, Salem, Oregon.
CHERRY				
Bitter, <i>Prunus emarginata</i>	5'5"	---	---	Near Crown Point, Oregon. Oliver V. Matthews, Salem.
Black, <i>Prunus serotina</i>	18'4"	77'	64'	Near Worton, Maryland. F. W. Besley, Laurel.
Carolina Laurel— <i>Prunus caroliniana</i>	9'10"	48'	55'	Near Eutawville, South Carolina. F. K. Bull, Pinopolis.
Pin, <i>Prunus pennsylvanica</i>	4'7"	20'	70'	Great Smoky Mountain National Park, Tennessee. S. Glidden Baldwin, Danville, Illinois.
Western Common Choke-, <i>Prunus virginiana demissa</i>	2'10"	---	---	Near Yamhill, Oregon. Oliver V. Matthews, Salem.
CHESTNUT				
American, <i>Castanea dentata</i>	6'3"	30'	60'	White Water, Wisconsin. Dr. Andrew I. Rosenberger, Milwaukee.
CHINABERRY				
<i>Melia azedarach</i>	10'2"	63'	40'	Near Wade, North Carolina. Harold B. Stabler, Washington, D. C.
CHINKAPIN				
Giant Evergreen-, or Western, <i>Castanopsis chrysophylla</i>	15'3"	---	127'	Near Annapolis, California. Arnold F. Wallen, Santa Rosa.
Ozark, <i>Castanea ozarkensis</i>	9'8"	45'	60'	Near Freck, Arkansas. Howard A. Howell, Little Rock.
COFFEETREE				
Kentucky, <i>Gymnocladus dioica</i>	12'6"	75'	75'	Near Madison, Ohio. Newton G. Armstrong, Cleveland.
CRABAPPLE				
Lanceleaf, <i>Malus lancifolia</i>	1'7"	17'	21'	Mt. Washington Cemetery Woods, Jackson County, Missouri. Kendall Laughlin, Chicago, Illinois.

Species	Circumference at 4½ feet	Spread	Height	Location of Tree and Nominator
CRABAPPLE (Cont.)				
Oregon, or Western, <i>Malus fusca</i>	5'4"	---	---	On the Nehalem River, Clatsop County, Oregon. Oliver V. Matthews, Salem.
Prairie, <i>Malus ioensis</i>	2'10"	25'	25'	Des Moines, Iowa. A. F. den Boer, Des Moines.
CRAPEMYRTLE				
Common, <i>Lagerstroemia indica</i>	6'6" (at 2½')	---	30'	Statesburg, South Carolina. Mrs. Walter C. White, Statesburg.
CYPRESS				
Arizona, <i>Cupressus arizonica</i>	17'3"	---	91'	Coronado National Forest, near Tucson, Arizona. James L. Mielke, Albuquerque, New Mexico.
Modoc, <i>Cupressus bakeri</i>	10'2"	---	110'	Near Miller Lake, Oregon. Oliver V. Matthews, Salem.
Monterey, <i>Cupressus macrocarpa</i>	11'	---	105'	Belmont, San Mateo County, California. Woodbridge Metcalf, Berkeley.
FALSECYPRESS				
Lawson, or Port Oxford Whitecedar, <i>Chamaecyparis lawsoniana</i>	27'2"	---	200'	Squaw Creek, Coos County, Oregon. Oliver V. Matthews, Salem.
Nootka, or Alaska Yellow Cedar, <i>Chamaecyparis nootkatensis</i>	17'5"	---	90'	Olympic National Park, Washington. Preston P. Macy, Port Angeles.
Whitecedar, or Atlantic Whitecedar, <i>Chamaecyparis thyoides</i>	10'5"	25'	60'	South of Milford, Delaware. W. S. Taber, Dover.
DEVILS-WALKINGSTICK				
<i>Aralia spinosa</i>	2'1"	12'	30'	Great Smoky Mountain National Park, Tennessee. S. Glidden Baldwin, Danville, Illinois.
DOGWOOD				
Flowering, <i>Cornus florida</i>	5'8"	---	---	Woodville, Mississippi. J. R. Hamilton, Woodville.
Pacific, or Western, <i>Cornus nuttalli</i>	6'11"	45'	100'	Milwaukie, Clackamas County, Oregon. Oliver V. Matthews, Salem.
Pagoda, <i>Cornus alternifolia</i>	1'3"	15'	---	Pennsylvania State College, State College, Pennsylvania. H. H. Arnold, State College.
Roughleaf, <i>Cornus asperifolia</i>	1'1"	13'	23'	Mt. Washington Cemetery, Jackson County, Missouri. Kendall Laughlin, Chicago, Illinois.
ELDER				
American, <i>Sambucus canadensis</i>	9"	13'	13'	Dunes State Park, Indiana. Kendall Laughlin, Chicago, Illinois.
Blackbead, <i>Sambucus melanocarpa</i>	13' (base)	---	28'	Near Troutdale, Multnomah County, Oregon. Oliver V. Matthews, Salem.
Blueberry, <i>Sambucus cerulea</i>	8'5"	---	---	Near San Rafael, California. Philip C. Knapp, San Francisco.
Pacific Red, <i>Sambucus callicarpa</i>	2'5"	---	---	On Shoalwater Bay, Pacific County, Washington. Oliver V. Matthews, Salem, Oregon.
ELM				
American, <i>Ulmus americana</i>	24'7"	147'	160'	Near Trigonía, Blount County, Tennessee. Edgar Calhoun, Kingsport.
Rock, <i>Ulmus thomasi</i>	16'6"	108'	65'	LeClaire, Iowa. F. G. Meyer, LeClaire.
September, or Red, <i>Ulmus serotina</i>	7'9"	65'	105'	Burnham Mountain, Glenwood, Arkansas. Kendall Laughlin, Chicago, Illinois.
Slippery, <i>Ulmus fulva</i>	15'5"	65'	70'	Near Willoughby, Lake County, Ohio. C. M. Shipman, Willoughby.
Winged, <i>Ulmus alata</i>	14'6"	---	105'	Near Madison, Alabama. Thomas Z. Atkeson, Jr., Washington, D. C.
EUONYMUS				
Eastern Wahoo, or Eastern Burning-bush, <i>Euonymus atropurpureus</i>	1'2"	18'	22'	Turkey Run State Park, Indiana. Kendall Laughlin, Chicago, Illinois.
FIG				
Florida Strangler, <i>Ficus aurea</i>	16'	50'	60'	Matheson Hammock, Florida. Devereux Butcher, Washington, D. C.
FIR				
Balsam, <i>Abies balsamea</i>	9'	42'	75'	Pocomoke City, Maryland. William L. Dennis (Deceased).
Fraser Balsam, <i>Abies fraseri</i>	6'7"	---	---	Great Smoky Mountain National Park, Tennessee. S. Glidden Baldwin, Danville, Illinois.
Cascades, or Pacific Silver, <i>Abies amabilis</i>	16'6"	---	---	Columbia National Forest, Washington. Oliver V. Matthews, Salem, Oregon.
Bigcone Douglas-, <i>Pseudotsuga macrocarpa</i>	24'	---	116'	Los Padres National Forest, California. A. J. Weisgerber, Los Padres National Forest.
Common Douglas-, <i>Pseudotsuga taxifolia</i>	53'4"	---	221'	Olympic National Park, Washington. Preston P. Macy, Port Angeles.
Grand, <i>Abies grandis</i>	19'11"	---	157'	Columbia National Forest, Washington. G. A. Bright, Vancouver.
Noble, <i>Abies procera</i>	22'8"	35'	260'	Columbia National Forest, Washington. Thornton T. Munger, Portland, Oregon.
Red, or California Red, <i>Abies magnifica</i>	25'3"	---	168'	Lassen Volcanic National Park, California. J. V. Lloyd, Lassen Volcanic National Park.
Shasta Red, <i>Abies magnifica shastensis</i>	19'6"	---	174'	Lassen National Forest, California. T. J. Starker, Corvallis, Oregon.
White, <i>Abies concolor</i>	25'5"	---	189'	Yosemite National Park, California. John B. Wosky, Yosemite National Park.

Species	Circumference at 4½ feet	Spread	Height	Location of Tree and Nominator
FRINGETREE				
White, or Flowering Ash, <i>Chionanthus virginicus</i>	3'5"	40'	35'	National Zoological Park, Washington, D. C. Ernest H. Van Fossan, Washington, D. C.
HACKBERRY				
Common, <i>Celtis occidentalis</i>	17'1"	95'	88'	Tappahannock, Virginia. Philip R. Hough, Washington's Birthplace, P.O.
Douglas, or Western, <i>Celtis douglasi</i>	4'4"	---	---	Portland, Oregon. Oliver V. Matthews, Salem.
Sugar, <i>Celtis laevigata</i>	15'3"	90'	60'	Florence, Alabama. Robert A. Campbell, Norris, Tennessee.
HAWTHORN				
Cockspur, <i>Crataegus crus-galli</i>	2'	16'	19'	Chechupinqua Woods, Cook County, Illinois. Kendall Laughlin, Chicago.
Dotted, <i>Crataegus punctata</i>	4'10"	35'	21'	Billy Caldwell's Reserve, Chicago, Illinois. Kendall Laughlin, Chicago.
Yellow Dotted, <i>Crataegus punctata aurea</i>	5'	43'	31'	Billy Caldwell's Reserve, Chicago, Illinois. Kendall Laughlin, Chicago.
Downy, <i>Crataegus mollis</i>	7'7"	49'	29'	Camp Ground Road Woods, Cook County, Illinois. Kendall Laughlin, Chicago.
Fleshy, <i>Crataegus succulenta</i>	1'	17'	25'	Chechupinqua Woods, Cook County, Illinois. Kendall Laughlin, Chicago.
Ontario, or Scarlet, <i>Crataegus pedicellata</i>	2'4"	23'	23'	Glenview Memorial Woods, Cook County, Illinois. Kendall Laughlin, Chicago.
Pear, <i>Crataegus calpodendron</i>	2'	28'	18'	Morton Arboretum, Lisle, Illinois. Kendall Laughlin, Chicago.
Prairie, <i>Crataegus disperma</i>	2'5"	27'	26'	Schiller Woods, Cook County, Illinois. Kendall Laughlin, Chicago.
Washington, <i>Crataegus phaenopyrum</i>	2'9"	23'	25'	Near Burnt Mill, Montgomery County, Maryland. F. W. Besley, Laurel.
HEMLOCK				
Canada, or Eastern, <i>Tsuga canadensis</i>	19'9"	69'	98'	Great Smoky Mountain National Park, Tennessee. S. Glidden Baldwin, Danville, Illinois.
Mountain, <i>Tsuga mertensiana</i>	20'10"	---	94'	Lassen Volcanic National Park, California. J. V. Lloyd, Lassen Volcanic National Park.
Pacific, or Western, <i>Tsuga heterophylla</i>	27'2"	---	125'	Olympic National Park, Washington. Preston Macy, Port Angeles.
HICKORY				
Arkansas Black, <i>Carya texana arkansana</i>	6'9"	43'	95'	Rose Inn, Crossett, Arkansas. Kendall Laughlin, Chicago, Illinois.
Bitternut, <i>Carya cordiformis</i>	12'6"	---	171'	West Feliciana Parish, Louisiana. Miss Lazella Schwarten, Jamaica Plain, Massachusetts.
Mockernut, <i>Carya tomentosa</i>	6'6"	60'	93'	Near Bryantown, Maryland. Karl E. Pfeiffer, Annapolis.
Pignut, <i>Carya glabra</i>	14'9"	---	---	Near Crosswicks, New Jersey. H. Gleason Mattoon, Philadelphia, Pennsylvania.
Red, <i>Carya ovalis</i>	13'4"	45'	145'	Norris Reservoir, Tennessee. Keith D. Lange, Norris.
Shagbark, <i>Carya ovata</i>	10'6"	60'	68'	Avon, Connecticut. Allen B. Cook, Hartford.
Shellbark, <i>Carya laciniosa</i>	12'9"	74'	128'	Big Oak Tree State Park, Missouri. Kendall Laughlin, Chicago, Illinois.
HOLLY				
American, <i>Ilex opaca</i>	11'1"	45'	72'	Olympia, Pamlico County, North Carolina. John L. Gray, Raleigh.
Mountain Winterberry, <i>Ilex montana</i>	1'2"	8'	18'	Great Smoky Mountain National Park, Tennessee. S. Glidden Baldwin, Danville, Illinois.
Possumhaw, <i>Ilex decidua</i>	1'1"	27'	20'	Big Oak Tree State Park, Missouri. Kendall Laughlin, Chicago, Illinois.
HOPHORNBEAM				
American, <i>Ostrya virginiana</i>	9'2"	50'	65'	Near Winthrop, Maine. J. R. Hansbrough, New Haven, Connecticut.
HORNBEAM				
American, or Blue Beech, <i>Carpinus caroliniana</i>	5'6"	60'	42'	Near Princess Anne, Maryland. F. W. Besley, Laurel.
JUNIPER				
Alligator, <i>Juniperus pachyphloea</i>	19'11"	70'	71'	Coronado National Forest, New Mexico. Rex King, Albuquerque.
Common, <i>Juniperus communis</i>	1'10" (at 6")	6'	5'	Black Hills, South Dakota. Harry R. Woodward, Pierre.
Rocky Mountain, or Utah, <i>Juniperus scopulorum</i>	26'8"	---	45'	Cache National Forest, Utah. R. P. McLaughlin, Logan.
Sierra, <i>Juniperus occidentalis</i>	40'11"	---	80'	Stanislaus National Forest, California. J. R. Hall, Sonora.
LARCH				
Eastern, or Tamarack, <i>Larix laricina</i>	9'8"	75'	90'	Tamworth, New Hampshire. Charles H. Porter, Tamworth.
Western, <i>Larix occidentalis</i>	24'	---	120'	Near Kootenai National Forest, Montana. Elers Koch, Missoula.
LAUREL				
California, <i>Umbellularia californica</i>	36'9"	---	---	Near Eleanor, Humboldt County, California. T. J. Starker, Corvallis, Oregon.

Species	Circumference at 4½ feet	Spread	Height	Location of Tree and Nominator
LAUREL (Cont.)				
Mountain-, <i>Kalmia latifolia</i>	2'7"	---	---	Great Smoky Mountain National Park, Tennessee. S. Glidden Baldwin, Danville, Illinois.
LINDEN: BASSWOOD				
American, <i>Tilia americana</i>	16'3"	75'	105'	Camelback Mountain, Monroe County, Pennsylvania. George W. Raish, Tannersville.
Beetree, or White, <i>Tilia heterophylla</i>	17'3"	---	---	Near Coldwell Corners, Delaware. William S. Taber, Dover.
Gulf, <i>Tilia leuocarpa</i>	9'8"	51'	114'	Whittington Park, Hot Springs, Arkansas. Kendall Laughlin, Chicago, Illinois.
Palmer, <i>Tilia palmeri</i>	7'5"	47'	61'	Scarritt Point, Kansas City, Missouri. Kendall Laughlin, Chicago, Illinois.
LOCUST				
Black, <i>Robinia pseudoacacia</i>	15'8"	40'	60'	Hyde Park, New York. H. F. Hedgecock, Poughkeepsie.
Common Honey-, <i>Gleditsia triacanthos</i>	18'9"	112'	92'	Near Queenstown, Maryland. F. W. Besley, Laurel.
LYSILOMA				
Bahama, or Wild Tamarind, <i>Lysiloma bahamensis</i>	8'	---	---	Key Largo, Florida. Charles C. Deam, Bluffton, Indiana.
MADRONE				
Pacific, <i>Arbutus menziesi</i>	27'8"	---	---	Humboldt County, California. R. H. Menzies, San Francisco.
MAGNOLIA				
Bigleaf, <i>Magnolia macrophylla</i>	6'7"	64'	59'	Baltimore, Maryland. F. W. Besley, Laurel.
Cucumbertree, <i>Magnolia acuminata</i>	18'4"	60'	125'	Great Smoky Mountain National Park, Tennessee. S. Glidden Baldwin, Danville, Illinois.
Fraser, or Mountain, <i>Magnolia fraseri</i>	7'7"	54'	65'	Great Smoky Mountain National Park, Tennessee. S. Glidden Baldwin, Danville, Illinois.
Southern, <i>Magnolia grandiflora</i>	14'4"	---	110'	Near Brooksville, Florida. Lisa von Borowsky, Brooksville.
Sweetbay, or Swamp, <i>Magnolia virginiana</i>	6'	---	---	Near Camden, South Carolina. Henry Savage, Camden.
Umbrella, <i>Magnolia tripetala</i>	4'3"	---	---	Lawrenceville, New Jersey. C. W. Schisler, Trenton.
MAHOGANY				
West Indies, <i>Swietenia mahagoni</i>	12'6"	75'	70'	Everglades National Park, Florida. Taylor R. Alexander, Coral Gables.
MANZANITA				
Whiteleaf, <i>Arctostaphylos viscida</i>	7'4"	24'	21'	Lassen National Forest, California. Clyde W. Lewis, Sterling City.
MAPLE				
Bigleaf, <i>Acer macrophyllum</i>	28'	66'	---	Near Haydens Bridge, Lane County, Oregon. Oliver V. Matthews, Salem.
Black, <i>Acer nigrum</i>	9'2"	81'	78'	Turkey Run State Park, Indiana. Kendall Laughlin, Chicago, Illinois.
Chalk, or Whitebark, <i>Acer leucoderme</i>	1'7"	19'	29'	Ouachita National Forest, Arkansas. Kendall Laughlin, Chicago, Illinois.
Douglas Rockymountain, <i>Acer glabrum douglasii</i>	5'6"	20'	50'	Birch Bay, Washington. Oliver V. Matthews, Salem, Oregon.
Mountain, <i>Acer spicatum</i>	3'	10'	25'	Great Smoky Mountain National Park, Tennessee. S. Glidden Baldwin, Danville, Illinois.
Red, <i>Acer rubrum</i>	18'7"	60'	60'	Wappingers Falls, New York. H. F. Hedgecock, Poughkeepsie.
Trident Red, <i>Acer rubrum tridens</i>	9'6"	35'	83'	Warren Woods, Three Oaks, Michigan. Kendall Laughlin, Chicago, Illinois.
Silver, <i>Acer saccharinum</i>	22'10"	110'	90'	Harbor, Maine. John D. Kendig, Manheim, Pennsylvania.
Striped, <i>Acer pennsylvanicum</i>	2'4"	30'	21'	Near State College, Pennsylvania. H. H. Arnold, State College.
Sugar, <i>Acer saccharum</i>	17'6"	75'	110'	Bethany, West Virginia. Stephen Spurr, Morgantown.
Vine, <i>Acer circinatum</i>	5'8"	54'	30'	Wilhoit Mineral Springs, Marion County, Oregon. Oliver V. Matthews, Salem.
MESQUITE				
Honey, <i>Prosopis glandulosa</i>	10'10"	65'	60'	Near Gatesville, Texas. Weldon D. Woodson, Los Angeles, California.
Velvet, <i>Prosopis velutina</i>	15'	76'	55'	Coronado National Forest, Arizona, Gilbert Sykes, Tucson.
MOUNTAINMAHOGANY				
Birchleaf, <i>Cercocarpus betuloides</i>	1'9"	---	---	Medford-Crater Lake Highway, Jackson County, Oregon. Oliver V. Matthews, Salem.
Curleaf, <i>Cercocarpus ledifolius</i>	10'7"	67'	24'	Nevada National Forest, Nevada. S. D. Warner, Baker.
MULBERRY				
Black, <i>Morus nigra</i>	13'3"	74'	65'	Near Easton, Maryland. F. W. Besley, Laurel.
Red, <i>Morus rubra</i>	8'9"	45'	65'	Great Smoky Mountain National Park, Tennessee. S. Glidden Baldwin, Danville, Illinois.
White, <i>Morus alba</i>	23'	---	---	Near Parkersburg, West Virginia. Miss C. E. Aumiller, Washington.

Species	Circumference at 4½ feet	Spread	Height	Location of Tree and Nominator
OAK				
Bartram, <i>Quercus heterophylla</i>	16'2"	52'	88'	Mt. Holly, Burlington County, New Jersey.
Bebb, <i>Quercus bebbiana</i>	6'10"	77'	54'	S. Glidden Baldwin, Danville, Illinois.
Black, <i>Quercus velutina</i>	19'6"	136'	90'	Swope Park, Kansas City, Missouri. Kendall Laughlin, Chicago, Illinois.
California Black, <i>Quercus kelloggii</i>	36'	---	---	Lloyd's Neck, Long Island, New York. Mrs. George H. Savage, Lloyd's Neck.
Missouri Black, <i>Quercus velutina missouriensis</i>	5'10"	51'	51'	Yosemite National Park, California. John B. Wosky, Yosemite National Park.
Blackjack, <i>Quercus marilandica</i>	9'5"	59'	56'	Swope Park, Kansas City, Missouri. Kendall Laughlin, Chicago, Illinois.
Bottom, <i>Quercus runcinata</i>	8'10"	66'	62'	Near Chillum, Maryland. F. W. Besley, Laurel.
Bur, or Mossycup, <i>Quercus macrocarpa</i>	21'4"	114'	143'	Heathwood Park, Kansas City, Kansas. Kendall Laughlin, Chicago, Illinois.
Bushes, <i>Quercus bushi</i>	5'5"	49'	33'	Big Oak Tree State Park, Missouri. Kendall Laughlin, Chicago, Illinois.
Cherrybark, <i>Quercus falcata leucophylla</i>	24'1"	80'	110'	Near Swope Park, Kansas City, Missouri. Kendall Laughlin, Chicago, Illinois.
Chestnut, <i>Quercus montana</i>	19'6"	101'	82'	Near Cumberland, Maryland. S. Glidden Baldwin, Danville, Illinois.
Swamp Chestnut, or Basket, <i>Quercus prinus</i>	30'3"	---	110'	Near Cecilton, Maryland. Karl E. Pfeiffer, Annapolis.
Chinkapin, <i>Quercus muehlenbergi</i>	14'1"	---	---	Near Sandhill, Mississippi. Z. Waters White, Wilmar, Arkansas.
Dwarf Chinkapin, <i>Quercus prinoides</i>	1'4"	15'	19'	New Burlington, Ohio. John Pickin, Dayton.
Deam, <i>Quercus deami</i>	8'	50'	85'	State College Pennsylvania. H. H. Arnold, State College.
Durand, <i>Quercus durandi</i>	14'2"	69'	135'	Near Bluffton, Indiana. S. Glidden Baldwin, Danville, Illinois.
Gambel, <i>Quercus gambellii</i>	15'8"	---	45'	Moxabee National Wildlife Refuge, Mississippi. Eugene Cypert, Jr., Paris, Tennessee.
Laurel, <i>Quercus laurifolia</i>	24'	---	---	Deep Creek, Washington County, Utah. R. P. McLaughlin, Logan.
Lea, <i>Quercus leana</i>	7'3"	62'	70'	Near Sebring, Florida. William F. Jacobs, Tallahassee.
Live, <i>Quercus virginiana</i>	35'	168'	78'	Forest Park, St. Louis, Missouri. Kendall Laughlin, Chicago, Illinois.
Canyon Live, <i>Quercus chrysolepsis</i>	36'3"	130'	60'	Near Hahnville, Louisiana. Charles Genella, New Orleans.
Coast Live, <i>Quercus agrifolia</i>	24'10"	129'	108'	Angeles National Forest, California. G. Armstrong, Los Angeles.
Interior Live, <i>Quercus wislizeni</i>	20'	100'	100'	Napa County, California. Woodbridge Metcalf, Berkeley.
Mesa, <i>Quercus engelmanni</i>	9'9"	110'	75'	Near Sacramento, California. Arthur J. Teller, Del Paso Heights.
Mutabilis, <i>Quercus mutabilis</i>	10'4"	61'	143'	Pasadena, California. Woodbridge Metcalf, Berkeley.
Overcup, <i>Quercus lyrata</i>	15'5"	72'	114'	Big Oak Tree State Park, Missouri. Kendall Laughlin, Chicago, Illinois.
Pin, <i>Quercus palustris</i>	18'2"	---	---	Patuxent Wildlife Refuge, near Laurel, Maryland. Karl E. Pfeiffer, Annapolis.
Northern Pin, <i>Quercus ellipsoidalis</i>	10'5"	70'	49'	Lawrenceville, New Jersey. C. W. Schisler, Trenton.
Post, <i>Quercus stellata</i>	13'9"	103'	80'	Dunes Park, Illinois. Kendall Laughlin, Chicago.
Northern Red, <i>Quercus borealis</i>	24'9"	---	60'	Charlotte County, Virginia. F. C. Pederson (Deceased).
Southern Red, <i>Quercus falcata</i>	24'1"	132'	122'	Millbrook, New York. H. F. Hedgecock, Poughkeepsie.
Swamp Red, <i>Quercus falcata pagodae-folia</i>	11'	65'	104'	Cumberland, Maryland. F. W. Besley, Laurel.
Scarlet, <i>Quercus coccinea</i>	13'11"	80'	97'	Big Oak Tree State Park, Missouri. Kendall Laughlin, Chicago, Illinois.
Sargent Scarlet, <i>Quercus coccinea tuberculata</i>	7'9"	60'	75'	Forest Hill, Maryland. F. W. Besley, Laurel.
Scrub, or Bear, <i>Quercus ilicifolia</i>	2'1"	26'	25'	Near Gatlinburg, Tennessee. S. Glidden Baldwin, Danville, Illinois.
Shingle, <i>Quercus imbricaria</i>	12'6"	84'	71'	Pennsylvania State College, State College, Pennsylvania. H. H. Arnold, State College.
Schneck, <i>Quercus shumardii schneckii</i>	9'8"	68'	68'	Near Sandy Spring, Maryland. F. W. Besley, Laurel.
Shumard, <i>Quercus shumardii</i>	18'3"	77'	91'	Parkwood Park, Kansas City, Kansas. Kendall Laughlin, Chicago, Illinois.
Tan-, <i>Lithocarpus densiflorus</i>	24'1"	84'	80'	Lake County, Tennessee. Eugene Cypert, Jr., Paris.
Turkey, <i>Quercus laevis</i>	7'9"	55'	54'	Near Cazadero, Sonoma County, California. Arnold F. Wallen, Santa Rosa.
Water, <i>Quercus nigra</i>	20'1½"	145'	102'	Maxwell's Point, Harford County, Maryland. F. W. Besley, Laurel.
White, <i>Quercus alba</i>	27'8"	165'	95'	Tougaloo, Mississippi. George E. Rice, Tougaloo.
California White, or Valley, <i>Quercus lobata</i>	27'9"	---	125'	Wye Mills, Maryland. F. W. Besley, Laurel.
Oregon White, <i>Quercus garryana</i>	25'6"	---	120'	Near Middletown, Lake Co., California. Woodbridge Metcalf, Berkeley.
Swamp White, <i>Quercus bicolor</i>	16'11"	112'	90'	Mendocino National Forest, California. H. G. Abbott, Orono, Maine.
				Near Hanover, Pennsylvania. C. N. Myers, Hanover.

Species	Circumference at 4½ feet	Spread	Height	Location of Tree and Nominator
OAK (Cont.) Willow, <i>Quercus phellos</i>	20'	106'	118'	Queenstown Eastern Shore, Maryland. S. Glidden Baldwin, Danville, Illinois and F. W. Besley, Laurel, Maryland.
OSAGEORANGE <i>Maclura pomifera</i>	18'10"	82'	66'	Near Carmichael, Maryland. F. W. Besley, Laurel.
PAWPAW Common, <i>Asimina triloba</i>	9'2½"	54'	50'	Adams County, Pennsylvania. C. N. Myers, Hanover.
PECAN <i>Carya illinoensis</i>	21'4"	145'	135'	Assumption Parish, Louisiana. Sam Mims, Baton Rouge.
PERSIMMON Common, <i>Diospyros virginiana</i>	8'1"	49'	59'	Auburn, Logan County, Kentucky. Louis Liedman, Russellville.
PINE				
Bristlecone, <i>Pinus aristata</i>	37'7"	45'	40'	Inyo National Forest, California. A. E. Noren, Bigpine.
Coulter, <i>Pinus coulteri</i>	17'	40'	144'	Angeles National Forest, California. Will H. Thrall, Alhambra.
Jack, <i>Pinus banksiana</i>	3'6"	21'	28'	Dunes State Park, Indiana. Kendall Laughlin, Chicago, Illinois.
Knobcone, <i>Pinus attenuata</i>	9'1"	—	—	Rogue River National Forest, Oregon. Oliver V. Matthews, Salem.
Limber, <i>Pinus flexilis</i>	24'5"	50'	44'	Cache National Forest, Utah. Wilford D. Porter, Logan.
Loblolly, <i>Pinus taeda</i>	16'1"	80'	115'	Near Corinth, Wake County, North Carolina. F. H. Claridge, Raleigh.
Lodgepole, <i>Pinus contorta latifolia</i>	19'	—	106'	Sierra National Forest, California. Harold S. Coons, Northfork.
Longleaf, <i>Pinus palustris</i>	10'7"	52'	85'	Urania, Louisiana. H. H. Chapman, New Haven, Connecticut.
Monterery, <i>Pinus radiata</i>	12'7"	—	135'	Near Napa, California, Woodbridge Metcalf, Berkeley.
Colorado Pinyon, <i>Pinus cembroides edulis</i>	11'3"	23'	33'	La Sal National Forest, Utah. Owen DeSpain, Moab.
Pitch, <i>Pinus rigida</i>	8'8"	40'	70'	Middleburg, New York. J. R. Hansbrough, New Haven, Connecticut.
Pond, <i>Pinus rigida serotina</i>	5'5"	32'	79'	Doncaster State Forest, Charles County, Maryland. F. W. Besley, Laurel.
Ponderosa, <i>Pinus ponderosa</i>	27'1"	—	162'	Near Lapine, Oregon. Donald F. McKay, Portland.
Red, <i>Pinus resinosa</i>	9'3"	35'	85'	Douglas County, Wisconsin. Charles H. Stoddard, Minong, and Albert A. Johnson, Waukesha.
Shortleaf, <i>Pinus echinata</i>	10'7"	60'	146'	Morganton, Burke County, North Carolina. A. H. Maxwell, Morganton.
Spruce, <i>Pinus glabra</i>	13'6"	60'	105'	Near Brookhaven, Lincoln County, Mississippi. Monty Payne, State College.
Sugar, <i>Pinus lambertiana</i>	31'8"	—	200'	Stanislaus National Forest, California. J. R. Hall, Sonora.
Tablemountain, <i>Pinus pungens</i>	6'10"	—	—	Chattahoochee National Forest, Georgia. C. A. Rowland, Jr., Gainesville.
Torrey, <i>Pinus torreyana</i>	15'7"	114'	96'	Carpenteria, California. Edward H. Scanlon, Santa Monica.
Virginia, <i>Pinus virginiana</i>	8'11"	38'	58'	Cedarville State Forest, Maryland. F. W. Besley, Laurel.
Eastern White, <i>Pinus strobus</i>	17'10"	—	—	Ottawa National Forest, Michigan. A. L. McBean, Park Falls, Wisconsin.
Western White, <i>Pinus monticola</i>	26'5"	—	207'	Bovill, Idaho. T. J. Starker, Corvallis, Oregon.
Whitebark, <i>Pinus albicaulis</i>	18'2"	60'	85'	Grand Teton National Park, Wyoming. Charles J. Smith, Moose.
PLANETREE; SYCAMORE				
American, or Eastern, <i>Platanus occidentalis</i>	25'4"	—	—	Conshohocken, Pennsylvania. M. D. Olver, Conshohocken.
California, <i>Platanus racemosa</i>	27'	158'	116'	Near Santa Barbara, California. Munsell Van Rennselaer, Santa Barbara.
PLUM				
American, or Wild, <i>Prunus americana</i>	5'	33'	29'	Near Steyer, Maryland. Karl E. Pfeiffer, Annapolis.
Inch, <i>Prunus lanata</i>	1'11"	28'	26'	Ouachita National Forest, Arkansas. Kendall Laughlin, Chicago, Illinois.
POPLAR; COTTONWOOD				
Balm-of-Gilead, <i>Populus tacamahaca</i> var. <i>candicans</i>	8'3"	48'	88'	Houghton, Michigan. William P. Nicholls, Houghton.
Eastern, <i>Populus deltoides</i>	30'	—	90'	Fort Kearney, Nebraska. V. W. Binderup, Minden.
Gray, <i>Populus canescens</i>	21'3"	90'	95'	Near Florida, Ohio. O. E. Files, Toledo.
Narrowleaf, <i>Populus angustifolia</i>	7'	25'	55'	Little Cottonwood Creek, Pueblo Mountains, Harney County, Oregon. Oliver V. Matthews, Salem.

Species	Circumference at 4½ feet	Spread	Height	Location of Tree and Nominator
POPLAR; COTTONWOOD (Cont.)				
Pacific, or Northern Black, <i>Populus trichocarpa hastata</i>	25'	—	—	Near Corvallis, Oregon. T. J. Starker, Corvallis.
Plains, <i>Populus sargenti</i>	29'8"	70'	55'	Near Thermopolis, Wyoming. O. F. Ludtke, Thermopolis.
Rio Grande, <i>Populus wislizeni</i>	25'2"	108'	72'	Moab, Utah. Owen DeSpain, Moab.
Southern, <i>Populus deltoides missouriensis</i>	21'7"	115'	124'	Near Geneva, New York. O. E. Files, Toledo, Ohio.
White, or Silver, <i>Populus alba</i>	13'7"	82'	85'	Clearspring, Maryland. F. W. Besley, Laurel.
REDBUD				
Eastern, <i>Cercis canadensis</i>	8' (@2')	40'	—	Near North Kingsfield, Ohio. Newton G. Armstrong, Cleveland.
REDWOOD				
<i>Sequoia sempervirens</i>	62'8"	—	308'	Maple Creek, Humboldt County California. Emanuel Fritz, Berkeley.
RHODODENDRON				
Coast, <i>Rhododendron macrophyllum</i>	2'2"	22'	26'	Takhenich Forest Camp, Siuslaw National Forest, Oregon. Oliver V. Matthews, Salem.
ROYALPALM				
Cuban, <i>Roystonea regia</i>	4' (at 4')	12'	95'	Collier Seminole State Park, Naples, Florida. Wilbur F. Smith, South Norwalk, Connecticut.
SASSAFRAS				
Common, <i>Sassafras albidum</i>	15'8"	52'	65'	Near Madison, New Jersey. S. Glidden Baldwin, Danville, Illinois.
SEQUOIA				
Giant, <i>Sequoia gigantea</i>	101'6" (base)	—	272'	Sequoia National Park, California. Isabelle F. Story, Washington, D. C.
SERVICEBERRY				
Pacific, <i>Amelanchier florida</i>	2'9"	—	—	Near Lyons, Linn County, Oregon. Oliver V. Matthews, Salem.
Shadblow, <i>Amelanchier canadensis</i>	7'7"	45'	50'	Near Northfield, Delaware County, New York. H. H. Chapman, New Haven, Connecticut.
SILVERBELL				
Mountain, <i>Halesia monticola</i>	11'9"	—	—	Great Smoky Mountain National Park, Tennessee. Stanley A. Cain, Knoxville.
SOAPBERRY				
Western, <i>Sapindus drummondi</i>	5'7"	30'	45'	Carnegie, Oklahoma. Floyd Clay, Alfalfa.
SOURWOOD				
<i>Oxydendrum arboreum</i>	6'4"	30'	85'	Great Smoky Mountain National Park, Tennessee. S. Glidden Baldwin, Danville, Illinois.
SPRUCE				
Brewer, <i>Picea breweriana</i>	12'2"	—	—	Near Miller Lake, Oregon. Oliver V. Matthews, Salem.
Colorado, or Blue, <i>Picea pungens</i>	11'9"	—	123'	Gunnison National Forest, Colorado. Fred R. Johnson, Denver.
Engelmann, <i>Picea engelmanni</i>	19'11"	30'	104'	Cache National Forest, Idaho. Jay B. Hann, Paris.
Norway, <i>Picea excelsa</i>	26'8"	59'	90'	Coventry, Connecticut. H. H. Chapman, New Haven.
Red, <i>Picea rubens</i>	14'1"	—	75'	Great Smoky Mountain National Park, North Carolina. Verne Rhoades, Asheville.
Sitka, <i>Picea sitchensis</i>	51'6"	50'	180'	Olympic National Park, Washington. Robert L. Wood, Poulsbo.
White, <i>Picea glauca</i>	8'9"	—	—	Ontonagon County, Michigan. William P. Nicholls, Houghton.
SUMAC				
Shining, <i>Rhus copallina</i>	1'1"	18'	27'	Dunes State Park, Indiana. Kendall Laughlin, Chicago, Illinois.
Smooth, <i>Rhus glabra</i>	2'6" (base)	—	45'	Homochitto National Forest, Mississippi. Herbert P. Rice, Rolling Fork.
Staghorn, <i>Rhus typhina</i>	2'6"	32'	22'	Kansas City, Missouri. A. E. Shirling, Kansas City.
SWEETGUM				
American, <i>Liquidambar styraciflua</i>	14'7"	101'	71'	Near Easton, Maryland. F. W. Besley, Laurel.
TORREYA				
California, or California-nutmeg, <i>Torreya californica</i>	14'10"	39'	141'	Near Mendocino, California. Edward Simons, San Francisco.
TULIPTREE; YELLOW POPLAR				
<i>Liriodendron tulipifera</i>	26'6"	98'	83'	Annapolis, Maryland. F. W. Besley, Laurel.
TUPELO				
Black, or Blackgum, <i>Nyssa sylvatica</i>	13'	—	85'	Langly, Fairfax County, Virginia. Robert H. Jackson, Washington, D. C.
VIBURNUM				
Blackhaw, <i>Viburnum prunifolium</i>	1'9"	14'	28'	Glen Mills, Pennsylvania. S. Glidden Baldwin, Danville, Illinois.

Species	Circumference at 4½ feet	Spread	Height	Location of Tree and Nominator
VIBURNUM (Cont.)				
Nannyberry, <i>Viburnum lentago</i>	5'	35'	22'	State College, Pennsylvania. H. H. Arnold, State College.
Rusty Blackhaw, <i>Viburnum rufidulum</i>	1'4"	19'	16'	Bennett Spring State Park, Dallas County, Missouri. Kendall Laughlin, Chicago, Illinois.
WALNUT				
Eastern Black, <i>Juglans nigra</i>	20'3"	128'	108'	Anne Arundel County, Maryland. F. W. Bes- ley, Laurel.
California Black, or Royal variety, <i>Juglans californica</i> var. <i>regia</i>	17'6"	137'	118'	Santa Rosa, California. Mrs. Julia Miller, Santa Rosa.
Hinds Black, <i>Juglans hindsii</i>	18'7"	----	95'	Near Arbuckle, Colusa County, California. Woodbridge Metcalf, Berkeley.
WAXMYRTLE				
Pacific, or California, <i>Myrica californica</i>	3'11"	----	----	Annapolis, Sonoma County, California. Richard H. May, Berkeley.
WILLOW				
Black, <i>Salix nigra</i>	19'7"	50'	85'	Near Woodville, Ohio. O. E. Files, Toledo.
Crack, or Brittle, <i>Salix fragilis</i>	11'10"	71'	55'	Chechupinqua Woods, Cook County, Illinois. Kendall Laughlin, Chicago.
Peachleaf, <i>Salix amygdaloides</i>	4'6"	34'	50'	Dunes State Park, Indiana. Kendall Laughlin, Chicago, Illinois.
Pussy, <i>Salix discolor</i> var. <i>eriocephala</i>	2'5"	26'	20'	Chechupinqua Woods, Cook County, Illinois. Kendall Laughlin, Chicago.
Ward Coastplain, <i>Salix longipes</i> <i>wardi</i>	2'11"	25'	18'	Caddo River, Glenwood, Arkansas. Kendall Laughlin, Chicago, Illinois.
White, <i>Salix alba</i>	23'6"	75'	85'	Near Winona, Ohio. F. Merrick Semans, North Jackson.
WITCHHAZEL				
Common, <i>Hamamelis virginiana</i>	2'	24'	21'	Windom, North Carolina. James Hutchins, Windom.
YELLOWWOOD				
American, <i>Cladrastis lutea</i>	12'2" (at 3')	----	----	Lawrenceville, New Jersey. C. W. Schisler, Trenton.
YUCCA				
Joshuatree, <i>Yucca brevifolia</i>	11'	30'	40'	Near Lancaster, California. San Antonio Club, Alhambra.
YEW				
Pacific, <i>Taxus brevifolia</i>	12'7"	----	----	Near Cherry Grove, Oregon. Oliver V. Mat- thews, Salem.