

A black and white photograph of a large, mature tree with a thick trunk and dense foliage. The tree is the central focus, with its branches spreading out in all directions. The background is a light, hazy landscape. The image has a grainy texture, typical of older printed materials. Three punch holes are visible on the left side of the page.

THE AMERICAN FORESTRY ASSOCIATION'S

*Social Register  
of  
Big Trees*



# THESE ARE THE CHAMPS

By KENNETH B. POMEROY and DOROTHY DIXON

TREES, the giants of the plant world, have their own aristocrats. A quarter of a century ago, The American Forestry Association launched a nationwide hunt for the largest specimens of various typical American trees. The campaign, designed to halt the tragic disappearance of these magnificent specimens, has attracted wide interest and has focused attention on the incalculable benefits of conserving these cherished natural landmarks. The campaign, still flourishing, applies to the 865 species of trees native to the continental United States, including a few imports that have become naturalized to the extent of reproducing themselves in the wild state.

The Association presents here its sixth report of current National Champion trees to further challenge those who use it to nominate trees larger than those listed, if they exist, as well as giants of other species not included. Interest in tree contests on the state and county levels also is encouraged. A number of organizations have been and are presently so engaged. Notable among these are the Maryland State Department of Forests and Parks, the Ohio Forestry Association, the Texas Forest Service, and the Michigan Botanical Club.

In continuing the Social Register for Trees, the Association now is guided by the U.S. Forest Service Tree and Range Plant Name Committee. Their recommendations for common and botanical nomenclature are contained in the *Check List of Native and Naturalized Trees of the United States*. The only exception is the inclusion here of Hawaiian trees. The current edition of this authoritative work was printed before Hawaii became a state and, therefore, it was not considered.

Over 200 persons took part in nominating the 385 National Champions shown here. Forty-three states and the District of Columbia claim one or more champions.

## MICHIGAN HAS MOST CHAMPIONS

Top honor goes to the State of Michigan for having the most champion trees (48), with California running a close second with 43. Other leading states are Ohio (25), Maryland (25), Oregon (24), Illinois (23), Missouri (22), Texas (21), and Florida (19).

The seven states not having qualified candidates among the National Champions are Delaware, Georgia, Iowa, Nebraska, Rhode Island, Vermont, and West Virginia.

Mr. Kendall Laughlin of Chicago, Illinois, a botanist of some distinction, leading with 52 nominations, and Mr. Paul W. Thompson, Chairman of the Michigan Botanical Club's Big Tree Committee, with 38 entries are the most prominent discoverers of Big Trees.

One hundred and ninety-eight persons are credited with from 1 to 10 nominations. Mr. Fred W. Besley, now deceased, located 20 champs; Mr. Oliver Matthews 13; Mr. John Aughanbaugh 12; Dr. S. Glidden Baldwin 12.

The world's tallest redwood, *Sequoia sempervirens*, is growing on land of the Arcata Redwood Company beside Redwood Creek in Humboldt County, California.

It has a measured height of 367.8 feet. The vital statistics of the most massive Coast redwood have not been reported to AFA. Who will be first to measure it? The tree, sometimes called the Senator, is growing on the bank of Bull Creek in Humboldt State Park.

The tallest ponderosa pine, listed here, reaches skyward 246 feet. This magnificent specimen is growing in the Siskiyou National Forest in Oregon.

The tallest incense-cedar, also recorded with the Association, is located in the Umpqua National Forest in Oregon. Its estimated height is 225 feet.

## 4600-YEAR-OLD TREES!

The oldest living trees in the world are reputed to be the bristlecone pines, the majority of which are found growing on the arid crags of California's White Mountains. Some of them are estimated to be more than 4,600 years old. The largest known bristlecone pine is the "Patriarch," believed to be about 1500 years of age.

The oldest known redwoods, including the giant sequoia, *Sequoi gigantea*, which bears the name of General Sherman, are about 3,500 years old. Both the "Patriarch" and the "General Sherman" are part of this report.

The General Sherman contains more wood, 600,120 board feet, than any other known tree. It would take twenty acres of the best loblolly pine in North Carolina to equal this volume.

Tree lovers and naturalists are cordially invited to join the search for Big Trees. If you know of a tree larger than the one listed, the Association will be pleased to have you nominate it. We also would be interested in hearing about the numerous species that have never been reported. A full, accurate report as to identity of species, circumference in feet and inches at 4½ feet above the ground, estimated height and average crown spread, location, ownership and state of preservation is required. (Instructions for measuring trees are available upon request.) A photograph of the tree is desired to complete the nomination.

Determination of bigness in trees is based on three key points. These are circumference, height and crown spread. To the total inches of stem circumference, breast high, is added the total height in feet plus one-quarter of the crown spread footage. This gives a single figure denoting aggregate size, with circumference as the No. 1 factor, followed by height and crown spread. If two trees of the same species have identical aggregate scores, the one with the largest circumference will be deemed the Champion.

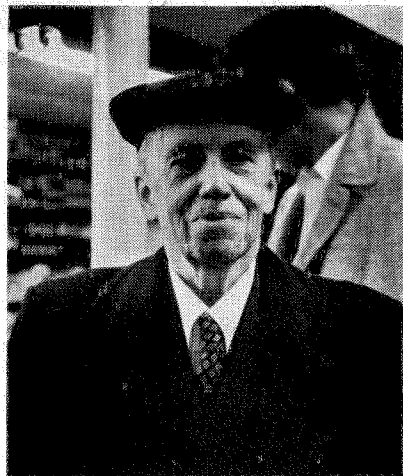
The register of the tree world's monarchs is subject to constant change, for the reasons that more massive contenders may be nominated, or trees may become victims of disease, the elements, or thoughtless commercialism. The bestowed title of National Champion, therefore, is unofficial in the strictest sense.

Grateful acknowledgement is made to Dr. Elbert L. Little Jr., Dendrologist, U.S. Forest Service, for unstinting assistance in checking tree identification and nomenclature.

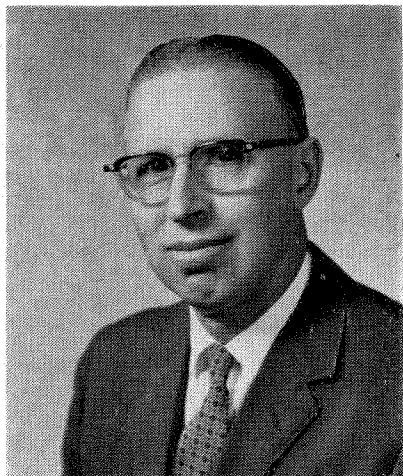
Species and Year Reported	Circumference at 4½ feet	Height	Spread	Location of Tree and Nominator
<b>ACACIA</b>				
Sweet, <i>Acacia farnesiana</i> (1965)	10'4"	36'	40'	Uvalde, Texas. William Graves, Uvalde.
<b>ALNUS</b>				
Tree-of-Heaven, <i>Ailanthus altissima</i> (1955)	18'8"	80'	75'	Head of the Harbor, Long Island, New York. George H. Peters, Freeport.
<b>ALDER</b>				
European, <i>Alnus glutinosa</i> (1965)	5'4"	70'	25'	Marion, Ohio. Larry E. Morse, Columbus.
Hazel, <i>Alnus serrulata</i> (1965)	1'5"	40'	22'	Near Shreve, Wayne Co., Ohio. John Aughanbaugh, Columbus.
Red, <i>Alnus rubra</i> (1966)	13'9"	92'	54'	Polk County, Oregon. R. L. Larson, Oregon City.
Seaside, <i>Alnus maritima</i> (1954)	3'6"	78'	50'	Rock Creek Park, Washington, D. C. Earnest H. Van Fossan, Washington, D. C.
Sitka, <i>Alnus sinuata</i> (1945)	1'2"	.....	.....	Saddle Mountain State Park, Clatsop County, Oregon. Oliver V. Matthews, Salem.
Speckled, <i>Alnus rugosa</i> (1966)	2'6"	50'	23'	Holland-Ottawa Beach Road, Ottawa Co., Michigan. Paul W. Thompson.
White, <i>Alnus rhombifolia</i> (1954)	11'3"	93'	45'	Angeles National Forest, California. Will H. Thrall, Alhambra; Clark Vernon, Downey.
<b>APPLE</b>				
Apple, <i>Malus pumila</i> (1965)	12'11"	30'	64'	Lima, Ohio. C. O. Boger, Columbus.
Lanceleaf crab apple, <i>Malus coronaria</i> var. <i>lancifolia</i> (1966)	2'8"	20'	26'	Schmidt's Farm, Kansas City, Missouri. Kendall Laughlin, Chicago, Illinois.
Oregon, <i>Malus diversifolia</i> (1955)	5'4"	.....	.....	Clatsop County, Oregon. Oliver V. Matthews, Salem.
Apple, <i>Malus ioensis</i> (1963)	2'9"	24'	20'	Schiller Woods, Chicago, Illinois. Kendall Laughlin, Chicago.
Sweet crab apple, <i>Malus coronaria</i> var. <i>coronaria</i> (1965)	4'	27'	28'	Wayne County, Ohio. John Aughanbaugh, Columbus.
<b>ASH</b>				
Black, <i>Fraxinus nigra</i> (1965)	9'7"	108'	48'	Wayne County, Ohio. John Aughanbaugh, Columbus.
Blue, <i>Fraxinus quadrangulata</i> (1965)	10'8"	114'	54'	Funk's Grove, Illinois. Kendall Laughlin, Chicago.
Green, <i>Fraxinus pennsylvanica</i> (1966)	14'8"	105'	79'	Big Oak Tree State Park, Missouri. Kendall Laughlin, Chicago, Illinois.
Oregon, <i>Fraxinus latifolia</i> (1945)	18'	.....	.....	Near Burlington, Oregon. T. J. Starker, Corvallis.
Pumpkin, <i>Fraxinus profunda</i> (1954)	11'5"	96'	36'	Big Oak Tree State Park, Missouri. Jeffrey R. Short, Jr., Chicago.
Velvet, <i>Fraxinus velutina</i> (1951)	5'4"	44'	46'	Twin Falls, Idaho. Harold C. Hallock, Twin Falls.
White, <i>Fraxinus americana</i> (1954)	22'3"	80'	82'	Glenn Mills, Pennsylvania. S. Glidden Baldwin, Danville, Illinois; T. V. Palmer, Concord, Pennsylvania.
<b>ASPEN</b>				
Bigtooth, <i>Populus grandidentata</i> (1963)	17'2"	95'	82'	Walker, New York. George W. Sawdey, Walker.
Quaking, <i>Populus tremuloides</i> (1965)	11'6"	70'	45'	Santa Fe National Forest, New Mexico. Elliott S. Barker, Santa Fe.
<b>BAYPRESS</b>				
Common, <i>Taxodium distichum</i> (1954)	39'8"	122'	47'	Three miles west of Sharon, Tennessee. James M. Thomas, Hazel, Kentucky.

Pioneer in Social Register was late Fred W. Besley, Md. State Forester





Tree Detective Kendall Laughlin has discovered 52 AFA champions

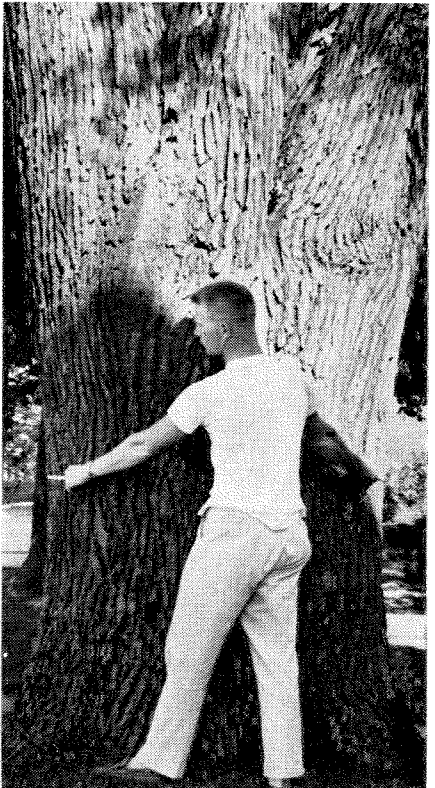


Paul W. Thompson, of Detroit, is runner up with 38 national champions

Species and Year Reported	Circumference at 4½ feet	Height	Spread	Location of Tree and Nominator
<b>BASSWOOD</b>				
American, <i>Tilia americana</i> (1964)	17'1"	103'	103'	Queenstown, Maryland. Fred W. Besley (deceased).
American, <i>Tilia americana</i> (1960)	16'11"	113'	67'	Grand Traverse County, Michigan. Paul W. Thompson, Birmingham.
Florida, <i>Tilia floridana</i> (1959)	10'1"	111'	54'	Whittington Park, Hot Springs, Arkansas. Kendall Laughlin, Chicago, Illinois.
White, <i>Tilia heterophylla</i> (1954)	13'9"	80'	61'	Near Little Switzerland, North Carolina. W. L. Beasley, Carthage.
<b>BAYBERRY</b>				
Pacific, <i>Myrica californica</i> (1961)	4'4"	80'	45'	Siuslaw National Forest, Oregon. Bob Lewis, Mike Clark and Richard H. Spray, Corvallis.
<b>BEECH</b>				
American, <i>Fagus grandifolia</i> (1966)	18'5"	91'	96'	Saugatuck, Michigan. H. J. Nott, Detroit.
<b>BIRCH</b>				
Gray, <i>Betula populifolia</i> (1955)	7'3"	60'	51'	Near Clarksville, Maryland. F. W. Besley (deceased).
Paper, <i>Betula papyrifera</i> var. <i>papyrifera</i> (1959)	10'11"	96'	93'	Lake Leelanau, Michigan. Howard Harvey, Williamsburg.
Northwestern Paper, <i>Betula papyrifera</i> var. <i>subcordata</i> (1950)	2'3"	.....	.....	Near Wallowa-Union, Oregon. Oliver V. Matthews, Salem.
River, <i>Betula nigra</i> (1951)	12'4"	98'	72'	Near Odenton, Maryland. Fred W. Besley (deceased).
Sweet, <i>Betula lenta</i> (1961)	15'2"	70'	87'	Near New Boston, New Hampshire. Phillip F. Allan, and S. N. Allan, Ithaca, New York.
Yellow, <i>Betula alleghaniensis</i> (1949)	14'1"	90'	64'	Great Smoky Mountains National Park, Tennessee. S. Glidden Baldwin, Danville, Illinois.
<b>BLACKHAW</b>				
Blackhaw, <i>Virburnum prunifolium</i> (1954)	1'9"	20'	19'	Glen Mills, Penna. S. G. Baldwin, Danville, Illinois; T. V. Palmer, Concordville, Penna.
Rusty, <i>Virburnum rufidulum</i> (1961)	3'11"	25'	30'	Near Washington, Arkansas. D. M. Moore, Russellville.
<b>BLADDERNUT</b>				
American, <i>Staphlea trifolia</i> (1966)	1'3"	29'	21'	Near Utica, Michigan. H. J. Nett, Detroit.
<b>BOXELDER</b>				
<i>Acer negundo</i> (1966)	13'6"	81'	108'	Detroit, Michigan. Lee and Myrtle Diamond, Utica.
<b>BUCKEYE</b>				
California, <i>Aesculus californica</i> (1945)	12'9"	35'	40'	Shafter Ranch, Olema, California. R. H. Menzies, San Francisco.
Ohio, <i>Aesculus glabra</i> (1965)	9'9"	85'	40'	Champaign County, Ohio. Charles B. English, Columbus.
Yellow, <i>Aesculus octandra</i> (1949)	15'11"	85'	54'	Great Smoky Mountains National Park, Tennessee. S. G. Baldwin, Danville, Illinois.
<b>BUCKTHORN</b>				
Carolina, <i>Rhamnus caroliniana</i> (1965)	1'3"	16'	10'	Dawes Arboretum, near Newark, Ohio. John Aughanbaugh, Columbus.
Cascara, <i>Rhamnus purshiana</i> (1954)	9'5"	60'	.....	Near Rockport, Washington. T. J. Starker, Corvallis, Oregon.
European, <i>Rhamnus cathartica</i> (1954)	4'6"	32'	34'	Pennsylvania State College, College, Pennsylvania. H. J. Starker, Corvallis, Oregon.
Glossy, <i>Rhamnus frangula</i> (1964)	1'1"	25'	22'	Glenview Woods, Glenview, Illinois. Kendall Laughlin, Chicago.

Species and Year Reported	Circumference at 4½ feet	Height	Spread	Location of Tree and Nominator
<b>BUFFALOBERRY</b>				
Silver, <i>Shepherdia argentea</i> (1951)	2'7"	18'	18'	Mahheur County, Oregon. Oliver V. Matthews, Salem.
<b>BUMELIA</b>				
Buckthorn, <i>Bumelia lycioides</i> (1954)	3'6"	40'	30'	Vulcan, Iron County, Missouri. George O. White, Jefferson City.
Gum, <i>Bumelia lanuginosa</i> (1964)	5'10"	51'	41'	Near Fairfield, Texas. David Lott, Fairfield.
<b>BUTTERNUT</b>				
<i>Juglans cinerea</i> (1965)	11'9"	85'	92'	St. Joseph County, Michigan. Louis Miller, Cassopolis.
<b>BUTTONBUSH</b>				
Common, <i>Cephalanthus occidentalis</i> (1966)	2'2"	29'	17'	Near Clinton, Michigan. Paul W. Thompson, Birmingham.
<b>CALIFORNIA-LAUREL</b>				
<i>Umbellularia californica</i> (1945)	36'9"	.....	.....	Near Eleanor, Humboldt County, Calif. T. J. Starker, Corvallis, Oregon.
<b>CASUARINA</b>				
Horsetail, <i>Casuarina equisetifolia</i> (1965)	10'10"	81'	54'	Greynolds Park, North Miami Beach, Florida. H. J. Nett, Detroit.
<b>CATALPA</b>				
Northern, <i>Catalpa speciosa</i> (1962)	17'4"	93'	74'	Lansing, Michigan. Paul W. Thompson, Birmingham.
Southern, <i>Catalpa bignonioides</i> (1959)	15'4"	54'	58'	Sparta, Michigan. Miss Carol Kurtz, Sparta and Howard Harvey, Acme.
<b>CEDAR</b>				
Alaska-cedar, <i>Chamaecyparis nootkatensis</i> (1964)	25'6"	134'	25'	Mount Rainier National Park, Washington. Raymond E. Pankiewicz, Alderton.
Atlantic white-cedar, <i>Chamaecyparis thyoides</i> (1961)	15'6"	87'	.....	Near Brewton, Alabama. Tom Kelly, Brewton.
Eastern redcedar, <i>Juniperus virginiana</i> (1965)	12'2"	76'	45'	Near Roganville, Texas. Mrs. H. W. Bridges, Roganville.
Incense-cedar, <i>Libocedrus decurrens</i> (1954)	36'	.....	.....	Rouge River National Forest, California. O. V. Matthews, Salem; Wallace Robinson, Medford, Oregon.
Incense-cedar (tallest) (1947)	16'3" (at 6')	225'	.....	Umpqua National Forest, Oregon. G. L. Hayes, Fort Collins, Colorado.
Northern white-cedar, <i>Thuja occidentalis</i> (1959)	17'2"	111'	38'	South Manitou Island, Michigan. Paul W. Thompson, Birmingham.
Port-Orford-cedar, <i>Chamaecyparis lawsoniana</i> (1954)	27'2"	200'	.....	Squaw Creek, Coos County, Oregon. Oliver V. Matthews, Salem.
Western redcedar, <i>Thuja pllicata</i> (1954)	66'1"	130'	55'	Olympic National Park, Washington. Floyd L. Dickinson, Port Angeles.
<b>CERCOCARPUS</b>				
Birchleaf, <i>Cercocarpus betuloides</i> (1959)	3'1" (at 3')	26'	25'	Prescott Park near Medford Oregon. F. LeRoy Spangler, Medford.
Curlleaf, <i>Cercocarpus ledifolius</i> (1945)	10'7" (at 18")	24'	67'	Nevada National Forest, near Baker, Nevada. S. D. Warner, Baker.
<b>CHERRY</b>				
Bitter, <i>Prunus emarginata</i> (1959)	5'5"	.....	.....	Near Crown Point, Multnomah County, Oregon. Oliver V. Matthews, Salem.
Black, <i>Prunus serotina</i> (1959)	23'4"	102'	89'	Lawrence, Van Buren County, Michigan. Paul W. Thompson, Birmingham.

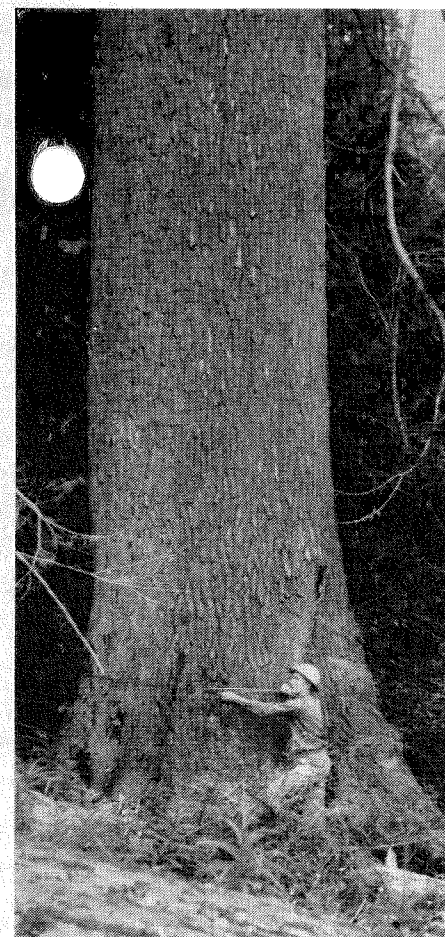
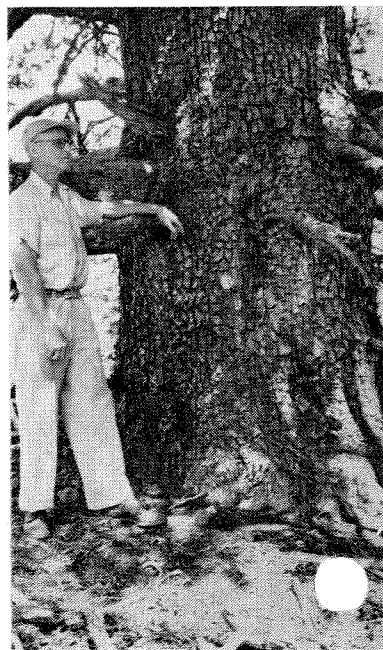
Largest coffee tree in Ohio found on property of H. H. Barnhart, Canal Winchester, O. Wilbur Barnhart, son of owner, measures circumference





Species and Year Reported	Circumference at 4½ feet	Height	Spread	Location of Tree and Nominator
Chokecherry, <i>Prunus virginiana</i> (1965)	6'1"	30'	50'	Triangle Park, Dayton, Ohio. Larry E. Morse, Columbus.
Mazzard, <i>Prunus avium</i> (1963)	14'5"	52'	64'	Near Chesterville, Ohio. John Aughanbaugh and William Mitchell, Columbus.
Pin, <i>Prunus Pensylvanica</i> (1961)	5'4"	45'	38'	Great Smoky Mountains National Park, Tennessee. Arthur Stupka, Gatlinburg.
<b>CHESTNUT</b>				
American, <i>Castanea dentata</i> (1964)	15'8"	90'	64'	Oregon City, Oregon. Donald J. Austen, Oregon City.
<b>CHINABERRY</b>				
<i>Melia azedarach</i> (1954)	10'6"	51'	53'	Near Orangeburg, South Carolina. C. W. Hall, Columbia.
<b>CHINKAPIN</b>				
Allegheny, <i>Castanea pumila</i> (1965)	14'3"	43'	45'	Daingerfield State Park, Texas. Melvin van Norman, Daingerfield.
Florida, <i>Castanea alnifolia</i> var. <i>floridana</i> (1961)	6'2"	50'	30'	Near Saratoga, Arkansas. Dwight M. Moore, Russellville.
Golden, <i>Castanopsis chrysophylla</i> (1954)	15'3"	127'	.....	Near Annapolis, Sonoma County, California. Arnold F. Wallen, Oakland.
Ozark, <i>Castanea ozarkensis</i> (1961)	13'2"	50'	40'	Near Winslow, Washington County, Arkansas. Dwight M. Moore, Russellville.
<b>COFFEETREE</b>				
Kentucky, <i>Gymnocladus dioicus</i> (1965)	13'7"	84'	60'	Near Hartford, Kentucky. Walter Phipps, Hartford.
<b>COTTONWOOD</b> (See Also Poplar)				
Black, <i>Populus trichocarpa</i> (1965)	32'6"	101'	60'	Near Haines, Alaska. A. S. Harris, Juneau.
Eastern, <i>Populus deltoides</i> (1963)	25'9"	131'	129'	Wayne, Michigan. Frank Walker, Wayne.
Fremont, <i>Populus fremontii</i> (1962)	16'10"	96'	99'	Montezuma National Monument, Arizona. Paul W. Thompson, Birmingham, Michigan.
Narrowleaf, <i>Populus angustifolia</i> (1954)	6'	55'	25'	Pueblo Mountains, Harney County, Oregon. Oliver V. Matthews, Salem.
Plains, <i>Populus sargentii</i> (1965)	9'2" (at 4')	80'	85'	Near Rockford, Illinois. Donald J. McFadyen, Rockford.
Swamp, <i>Populus heterophylla</i> (1965)	18'	100'	.....	Franklin County, Ohio. Henry (Dock) Maxwell, Columbus.
<b>CYPRESS</b>				
Arizona, <i>Cupressus arizonica</i> (1955)	17'5"	102'	38'	Coronado National Forest near Tucson, Arizona. James L. Mielke, Albuquerque, New Mexico.
Modoc, <i>Cupressus bakeri</i> (1963)	16'2"	70'	42'	Plumas National Forest, California. W. W. Wagener and C. R. Quick, Berkeley.
Monterey, <i>Cupressus macrocarpa</i> (1951)	11'	105'	.....	Belmont, San Mateo County, California. Woodbridge Metcalf, Berkeley.
<b>DEVILS WALKING STICK</b>				
<i>Aralia spinosa</i> (1961)	2'3"	26'	20'	Great Smoky Mountains National Park, North Carolina. Arthur Stupka, Gatlinburg, Tennessee.
<b>DOGWOOD</b>				
Alternate-Leaf, <i>Cornus alternifolia</i> (1962)	1'3"	32'	32'	St. Clair County, Michigan. Paul W. Thompson, Birmingham.
Flowering, <i>Cornus florida</i> (1955)	5'4"	30'	42'	Near Oriole, Somerset County, Maryland. F. W. Besley (deceased).
Pacific, <i>Cornus nuttallii</i> (1965)	1'9"	30'	.....	Near Lowell, Clearwater County, Idaho. Frederic D. Johnson, Moscow.

Champion Modoc Cypress near Wheeler Peak in California



Record Noble Fir on Pinchot National Forest, Washington

Species and Year Reported	Circumference at 4½ feet	Height	Spread	Location of Tree and Nominator
Roughleaf, <i>Cornus drummondii</i> (1962)	1'4"	24'	19'	Mt. Washington Cemetery, Independence, Missouri. Kendall Laughlin, Chicago, Illinois.
<b>DOUGLAS-FIR</b>				
Bigcone, <i>Pseudotsuga macrocarpa</i> (1964)	24'	120'	64'	Los Padres National Forest, California. Gary Plisco, Frazier Park.
Coast, <i>Pseudotsuga menziesii</i> , var. <i>menziesii</i> (1963)	45'5"	221'	61'	Olympic National Park, Washington. Preston P. Macy, Port Angeles.
Rocky Mountain, <i>Pseudotsuga menziesii</i> var. <i>glauca</i>	19'6"	135'	.....	Boise, Idaho. Frederic D. Johnson, Moscow.
<b>DOVEPLUM</b>				
<i>Coccoloba diversifolia</i> (1965)	5'6"	45'	28'	Simpson Park, Miami, Florida. Harold J. Nett, Detroit, Michigan.
<b>ELDER</b>				
American, <i>Sambucus canadensis</i> (1965)	10"	16'	12'	South Manitou Island, Michigan. M. T. Hall; Paul W. Thompson, Birmingham.
Blackbead, <i>Sambucus melancarpa</i> (1954)	2'2"	30'	.....	Near Prescott, Columbia County, Oregon. Oliver V. Matthews, Salem.
Blueberry, <i>Sambucus glauca</i> (1945)	8'5"	.....	.....	Near San Rafael, California. Phillip C. Knapp, San Francisco.
Pacific Red, <i>Sambucus calli-carpa</i> (1965)	1'1"	16'	16'	Pequaming, Baraga County, Michigan. H. J. Nett, Detroit.
<b>ELM</b>				
American, <i>Ulmus americana</i> (1951)	24'7"	160'	147'	Near Trigon, Blount County, Tennessee. Edgar Calhoun, Kingsport.
Cedar, <i>Ulmus crassifolia</i> (1964)	8'2"	94'	50'	Near Oletha, Texas. David Lott, Fairfield.
Rock, <i>Ulmus thomasi</i> (1966)	11'	99'	61'	Swope Park, Kansas City, Missouri. Kendall Laughlin, Chicago.
September, <i>Ulmus serotina</i> (1965)	6'2"	77'	42'	Glenwood, Arkansas. Kendall Laughlin, Chicago, Illinois.
Siberian, <i>Ulmus pumila</i> (1966)	8'8" (at 3')	55'	58'	Rosewood, Champaign County, Ohio. Dave Brown, Columbus.
Slippery, <i>Ulmus rubra</i> (1962)	21'2"	116'	101'	Henderson, Kentucky. Henry Converse, Henderson.
Winged, <i>Ulmus alata</i> (1963)	10'3"	64'	90'	Centerville, Leon County, Texas. David Lott, College Station.
<b>FALSE-MASTIC</b>				
<i>Sideroxylon foetidissimum</i> (1955)	8'9"	56'	30'	Matheson Hammock, near Miami, Florida. E. A. Schory, Ft. Myers; Roy Woodburg, Coral Gables.
<b>FIG</b>				
Florida Strangler, <i>Ficus aurea</i> (1965)	22'1"	51'	58'	Bay Front Park, Miami, Florida. Harold J. Nett, Detroit, Michigan.
<b>FIR</b>				
Balsam, <i>Abies balsamea</i> (1962)	7'	116'	33'	Porcupine Mountains State Park, Michigan. Paul W. Thompson, Birmingham.
Corkbark, <i>Abies lasiocarpa</i> var. <i>arizonica</i> (1959)	9'8"	115'	36'	Fort Apache Indian Reservation, Arizona. White Mountain Apache Tribe, Whiteriver.
Fraser, <i>Abies fraseri</i> (1961)	7'9"	.....	.....	Great Smoky Mountains National Park, Tennessee. Arthur Stupka, Gatlinburg.
Grand, <i>Abies grandis</i> (1954)	22'4"	175'	40'	Mount Rainier National Park, Washington. Robert L. Wood, Poulsbo.
Noble, <i>Abies procera</i> (1964)	28'4"	278'	47'	Gifford Pinchot National Forest, Washington. H. W. Coates; R. B. Smith, Randle.

Species and Year Reported	Circumference at 4½ feet	Height	Spread	Location of Tree and Nominator
Pacific Silver, <i>Abies amabilis</i> (1964)	21'5"	186'	38'	Olympic National Park, Washington. Floyd L. Dickinson, Port Angeles.
California Red, <i>Abies magnifica</i> , var. <i>magnifica</i> (1965)	25'3"	168'	.....	Lassen Volcanic National Park, California. J. V. Lloyd, Lassen Volcanic National Park.
Shasta Red, <i>Abies magnifica</i> var. <i>shastensis</i> (1954)	19'6"	174'	.....	Lassen National Forest, California. T. J. Starker, Corvallis, Oregon.
Subalpine, <i>Abies lasiocarpa</i> var. <i>lasiocarpa</i> (1965)	21'1"	129'	22'	Olympic National Park, Washington. Stephen F. Arno, Port Angeles.
White, <i>Abies concolor</i> (1961)	27'8"	179'	34'	Mount Diablo Base, Meridian, California. R. W. Kirkpatrick. Sanger.
<b>FRANKLINIA</b>				
Franklinia <i>alatamaha</i> (1963)	1'2"	22'	12'	Tyler Arboretum, Lima, Pennsylvania. Mark Robinson, Media.
<b>FRINGETREE</b>				
<i>Chionanthus virginicus</i> (1954)	4'8"	60'	62'	National Zoological Park, Washington, D. C. Ernest H. Van Fossan, Washington, D. C.
<b>GUMBO-LIMBO</b>				
<i>Bursera simaruba</i> (1964)	5'1"	51'	35'	Everglades National Park, Florida. Paul W. Thompson, Birmingham, Michigan.
<b>HACKBERRY</b>				
Hackberry, <i>Celtis occidentalis</i> (1962)	18'	113'	79'	Near Wayland, Allegan County Michigan. Gabriel Merren, Wayland.
Netleaf hackberry, <i>Celtis reticulata</i> (1966)	4'9"	.....	.....	Kooskia, Idaho. Frederic D. Johnson, Moscow.
<b>HAWTHORN.</b> Trees reported by Kendall Laughlin, Chicago, Illinois, 1966.				
<i>Crataegus acanthocolonensis</i>	2'7"	21'	24'	Morton Arboretum, Lisle, Ill.
<i>Crataegus apiomorpha</i>	1'6"	23'	15'	Morton Arboretum, Lisle, Ill.
<i>Crataegus blothra</i>	2'11"	50'	33'	Harms Woods, Glenview, Ill.
<i>Crataegus disperma</i>	2'7"	24'	21'	Schiller Woods, Chicago, Ill.
<i>Crataegus hillii</i>	4'1"	41'	41'	Thatcher Woods, River Forest, Ill.
<i>Crataegus holmesiana</i>	2'1"	28'	20'	Morton Arboretum, Lisle, Ill.
<i>Crataegus macrosperma</i>	1'11"	27'	15'	Schiller Woods, Chicago, Ill.
<i>Crataegus magniflora</i>	1'3"	28'	24'	Thatcher Woods, River Forest, Ill.
<i>Crataegus mortonis</i>	4'7"	34'	37'	Morton Arboretum, Lisle, Ill.
<i>Crataegus paucispina</i>	1'10"	21'	10'	Morton Arboretum, Lisle, Ill.
<i>Crataegus pedicellata</i>	2'11"	32'	29'	Harms Woods, Glenview, Ill.
<i>Crataegus succulenta</i>	1'4"	25'	14'	Glenview Woods, Glenview, Ill.
<i>Crataegus tortilis</i>	3'	30'	22'	Miami Woods East, Morton Grove, Ill.
<b>HAWTHORN, Other Champions</b>				
Cockspur, <i>Crataegus crus-galli</i> (1965)	6'2"	27'	37'	Near Orrville, Wayne County, Ohio. John Aughanbaugh, Columbus.
Dotted, <i>Crataegus punctata</i> (1959)	4'2"	39'	52'	Bloomfield Hills, Oakland County, Michigan. Paul W. Thompson, Birmingham.
Downy, <i>Crataegus mollis</i> (1966)	6'9"	49'	48'	Southfield, Michigan. Paul W. Thompson, Birmingham.
Pear, <i>Crataegus calpodendron</i> (1956)	2'6"	22'	30'	Grantsville, Maryland. Fred W. Besley (deceased).
Washington, <i>Crataegus phae-nopyrum</i> (1965)	3'3"	24'	20'	Secrest Arboretum, Wooster, Ohio. John Aughanbaugh, Columbus.

Species and Year Reported	Circumference at 4½ feet	Height	Spread	Location of Tree and Nominator
<b>HEMLOCK</b>				
Carolina, <i>Tsuga caroliniana</i> (1952)	9'4"	.....	.....	Near Brevard, North Carolina. Graham M. Watts, Philadelphia, Pa.
Eastern, <i>Tsuga canadensis</i> (1949)	19'9"	98'	69'	Great Smoky Mountains National Park, Tennessee. S. Glidden Baldwin, Danville, Illinois.
Mountain, <i>Tsuga mertensiana</i> (1955)	21'9"	118'	84'	Stanislaus National Forest, Alpine County, California. Allen F. Miller, Sonora.
Western, <i>Tsuga heterophylla</i> (1954)	27'2"	125'	47'	Olympic National Park, Washington. Preston P. Macy, Longmire.
<b>HERCULES-CLUB</b>				
<i>Zanthoxylum clava-herculis</i> (1961)	7'6"	38'	59'	Little Rock, Arkansas. Dwight M. Moore, Russellville.
<b>HICKORY</b>				
Black, <i>Carya texana</i> (1961)	9'4"	90'	86'	Spears League, Hardin County, Texas. Armand Yramatequi, Houston.
Bitternut, <i>Carya cordiformis</i> (1955)	12'6"	97'	68'	Baltimore County, Maryland. F. W. Besley (deceased).
Mockernut, <i>Carya tomentosa</i> (1955)	9'2"	112'	58'	Sandy Spring, Montgomery County, Maryland. F. W. Besley (deceased).
Pignut, <i>Carya glabra</i> , var. <i>glabra</i> (1964)	11'5"	165'	60'	Baton Rouge, Louisiana. W. Shewen Slaughter, Baton Rouge.
Coast Pignut, <i>Carya glabra</i> var. <i>megacarpa</i> (1956)	11'4"	85'	102'	Winter Park, Florida. William P. Wharton, Gorton, Massachusetts.
Red, <i>Carya ovalis</i> (1945)	13'4"	145'	45'	Near Speedwell, Tennessee. Keith D. Lange, Norris.
Sand, <i>Carya pallida</i> (1965)	9'2"	90'	64'	Gloucester County, New Jersey. Louis E. Hand, New Lisbon.
Shagbark, <i>Carya ovata</i> (1961)	11'5"	100'	113'	Chevy Chase, Maryland. Alexander McCook Dunlop, Chevy Chase.
Shellbark, <i>Carya laciniosa</i> (1962)	12'3"	115'	90'	French Lick, Indiana. Kendall Laughlin, Chicago, Illinois.
Water, <i>Carya aquatica</i> (1955)	10'7"	120'	68'	Near Camden, South Carolina. Henry Savage, Jr., Camden.
<b>HOLLY</b>				
American, <i>Ilex opaca</i> (1964)	13'4"	53'	61'	Near Hardin, Liberty County, Texas. Billy Frank Eaves, Woodville.
<b>HONEYLOCUST</b>				
<i>Gleditsia triacanthos</i> (1945)	18'9"	92'	112'	Queenstown, Maryland. F. W. Besley (deceased).
Thornless, <i>Gleditsia triacanthos inermis</i> (1966)	10'	105'	58'	Big Oak Tree State Park, Missouri. Kendall Laughlin, Chicago, Ill.
Waterlocust, <i>Gleditsia aquatica</i> (1966)	4'8"	91'	34'	Big Oak Tree State Park, Missouri. Kendall Laughlin, Chicago, Illinois.
<b>HOPHORNBEAM</b>				
Eastern, <i>Ostrya virginiana</i> (1954)	9'6"	70'	57'	Near Winthrop, Maine. John R. Hansbrough, Upper Darby, Pennsylvania.
<b>HOPTREE</b>				
Common, <i>Ptelea trifoliata</i> (1965)	1'10"	24'	31'	Community Park, Ada, Michigan. C. M. Rogers, Detroit; Paul W. Thompson, Birmingham.
<b>HORNBEAM</b>				
American, <i>Carpinus caroliniana</i> (1961)	7'7"	42'	30'	Great Smoky Mountains National Park, North Carolina. Arthur Stupka, Gatlinburg.
American, <i>Carpinus caroliniana</i> (1966)	7'7"	42'	50'	North Lawn Cemetery, Canton, Ohio. Charles C. King, Wilnot.



Speedwell, Tenn., claims this champ Red Hickory

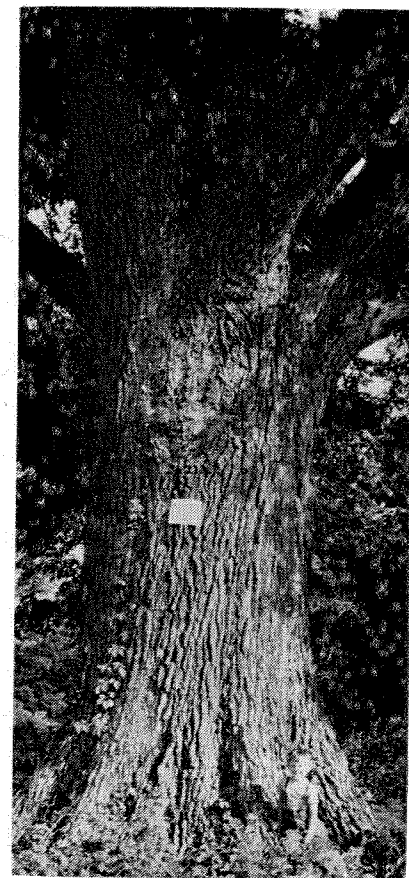


The Lone Star State of Texas claims champ American Holly

Species and Year Reported	Circumference at 4½ feet	Height	Spread	Location of Tree and Nominator
<b>INCENSE-CEDRAR</b>				
Libocedrus decurrens (1954)	36'	.....	.....	Rogue River National Forest, California. Oliver V. Matthews, Salem; Wallace Robinson, Portland, Oregon.
<b>JOSHUA-TREE</b>				
Joshua-Tree, Yucca brevifolia (1956)	12'6"	32'	37'	Joshua Tree National Monument, California. Samuel A. King, Twenty-nine Palms.
<b>JUNIPER</b>				
Alligator, Juniperus deppeana (1962)	29'7"	57'	57'	Tonto National Forest, Phoenix, Arizona. R. E. Courtney and Personnel, Phoenix.
Common, Juniperus communis var. communis (1966)	10"	14'	7'	Dunes State Park, Indiana. Kendall Laughlin, Chicago, Illinois.
Oldfield, Juniperus communis var. depressa (1965)	1'2"	16'	7'	Glen Haven, Leelanau County, Michigan. Paul W. Thompson, Birmingham.
Rocky Mountain, Juniperus scopulorum (1945)	26'8"	45'	.....	Cache National Forest, Utah. R. P. McLaughlin, Logan.
Western, Juniperus occidentalis (1954)	42'9"	87'	51'	Stanislaus National Forest, California. J. R. Hall, Sonora.
<b>KOA</b>				
Acacia koa (1961)	15'10"	122'	.....	Near Hilo, Hawaii Island, Hawaii. Edgar Linton, Kansas City, Missouri.
<b>LARCH—(See also Tamarack)</b>				
Subalpine, Larix lyallii (1965)	13'4"	50'	22'	Bitterroot National Forest, Montana. Stephen F. Arno, Missoula.
Western, Larix occidentalis (1954)	24'	120'	37'	Near Kootenai National Forest, Montana. Elers Koch, Missoula.
<b>LAURELCHERRY</b>				
Carolina, Prunus caroliniana (1954)	9'10"	55'	48'	Near Eutawville, South Carolina. F. K. Bull, Pinopolis.
<b>LEBBEK</b>				
Lebbek, Albizia lebbek (1964)	8'	62'	67'	Florida City, Florida. Paul W. Thompson, Birmingham, Michigan.
<b>LOBLOLLY-BAY</b>				
Gordonia lasianthus (1963)	11'10"	94'	54'	Hugh's Island, Ocala National Forest, Florida. R. W. Simons, D. B. Ward, Gainesville.
<b>LOCUST</b>				
Black, Robinia pseudoacacia (1955)	15'11"	85'	60'	Near Jefferson, Indiana. N. A. Miller, Frankfort.
<b>LYSILOMA</b>				
Bahama, Lysiloma bahamensis (1955)	7'6"	48'	50'	Key Largo, Florida. Elbert A. Schory, St. Fort Myers; Roy Woodbury, Coral Gables.
<b>MADRONE</b>				
Pacific, Arbutus menziesii (1955)	30'9"	80'	126'	Humboldt County, California. R. H. Menzies, San Francisco.
<b>MAGNOLIA</b>				
Bigleaf, Magnolia macrophylla (1951)	6'7"	59'	64'	Baltimore, Maryland. Fred W. Besley (deceased).
Cucumbertree, Magnolia acuminata (1949)	18'4"	125'	60'	Great Smoky Mountains National Park, Tennessee. S. Glidden Baldwin, Danville, Illinois.
Fraser, Magnolia fraseri (1949)	7'7"	65'	54'	Great Smoky Mountains National Park, Tenn. S. Glidden Baldwin, Danville, Ill.
Southern, Magnolia grandiflora (1965)	18'	99'	71'	Baton Rouge, Louisiana. H. Lewis, Jr., Alexandria.
Sweetbay, Magnolia virginiana (1963)	11'	95'	47'	Gainesville, Florida. Robert W. Simons, Daniel B. Ward.

Species and Year Reported	Circumference at 4½ feet	Height	Spread	Location of Tree and Nominator
Umbrella, Magnolia tripetala (1955)	4'9"	40'	25'	Elmont, Long Island, New York. George H. Peters, Freeport.
<b>MAHOGANY</b>				
West Indies, Swietenia mahagoni (1964)	11'5"	91'	76'	Everglades National Park, Florida. Paul W. Thompson, Birmingham, Michigan.
<b>MANGROVE</b>				
Rhizophora mangle (1964)	1'4"	48'	26'	Everglades National Park, Florida. Paul W. Thompson, Birmingham, Mich.
<b>MAPLE</b>				
Bigleaf, Acer macrophyllum (1962)	23'6"	96'	100'	Near Portland, Oregon. Miss Ann Sullivan, Portland; Dale Christiansen, Portland.
Bigtooth, Acer grandidentatum (1965)	5'4"	45'	61'	Near Vanderpool, Bandera County, Texas. William Graves, Uvalde.
Black, Acer nigrum (1966)	13'11"	116'	107'	Oakland County, Michigan. H. J. Nett, Detroit.
Chalk, Acer leucoderme (1948)	1'7"	29'	19'	Ouachita National Forest, Arkansas. Kendall Laughlin, Chicago, Illinois.
Douglass, Acer glabrum var. douglasii (1954)	5'6"	50'	20'	Birch Bay, Washington. Oliver V. Matthews, Salem, Oregon.
Drummond, Red, Acer rubrum var. drummondii (1964)	6'8"	107'	37'	Big Oak Tree State Park, Missouri. Kendall Laughlin, Chicago, Illinois.
Mountain, Acer spicatum (1964)	1'4"	48'	34'	South Manitou Island, Leelanau County, Michigan. M. T. Hall and Paul W. Thompson, Birmingham.
Red, Acer rubrum var. rubrum (1966)	15'4"	136'	95'	Near Utica, Macomb County, Michigan. Paul W. Thompson, Birmingham.
Silver, Acer saccharinum (1945)	22'10"	90'	110'	Fryeburg-Harbor, Maine. John D. Kendig, Manheim, Pennsylvania.
Striped, Acer pensylvanicum (1954)	3'10"	38'	25'	Pine Hill near Princeton, Massachusetts. Jeffrey R. Short, Jr., Chicago, Illinois.
Striped, Acer pensylvanicum (tallest) (1962)	2'1"	58'	29'	Marquette County, Michigan. Paul W. Thompson, Birmingham; William Harris, Jr., Grosse Pointe.
Sugar, Acer saccharum (1956)	19'9"	116'	75'	Garrett County, Maryland. F. W. Besley (deceased).
Vine, Acer circinatum (1964)	3'8"	30'	54'	Wilhoit Mineral Springs, Marion County, Oregon. Oliver V. Matthews, Salem.
<b>MESQUITE</b>				
Honey, Prosopis juliflora var. glandulosa (1965)	13'11"	40'	40'	Uvalde, Texas. William Graves, Uvalde.
Velvet, Prosopis juliflora var. velutina (1952)	15'	55'	76'	Coronado National Forest, Arizona. Gilbert Sykes, Tucson.
<b>MOUNTAIN-ASH</b>				
American, Sorbus americana (1945)	5'6"	.....	.....	Great Smoky Mountains National Park, Tennessee. S. Glidden Baldwin, Danville, Illinois.
Showy, Sorbus decora (1966)	3'7"	38'	30'	Sugar Island, Chippewa County, Michigan. J. Hiltunen, Ann Arbor.
<b>MOUNTAIN-LAUREL</b>				
Kalmia latifolia (1952)	3'6"	25'	45'	Great Smoky Mountains National Park, Tennessee. Arthur Stupka, Gatlinburg.
<b>MULBERRY</b>				
Black, Morus nigra (1956)	15'1"	65'	70'	Near Easton, Maryland. F. W. Besley (deceased).
Red, Morus rubra (1965)	15'7"	56'	87'	Fremont, Sandusky County, Ohio. Carl J. Dymond, Columbus.





Maryland's champ Cherrybark Oak measures 24'1" b.h.

Species and Year Reported	Circumference at 4½ feet	Height	Spread	Location of Tree and Nominator
White, <i>Morus alba</i> (1955)	16'2"	68'	80'	Perryville, Cecil County, Maryland. F. W. Besley (deceased).
<b>NANNYBERRY</b>				
<i>Virburnum lentago</i> (1949)	5'	22'	35'	Centre Hills Country Club, College, Pennsylvania. H. Arnold, State College.
<b>OAK</b>				
Arkansas, <i>Quercus arkansana</i> (1961)	11'6"	55'	57'	Near Columbus, Howard County, Arkansas. Dwight M. Moore, Russellville.
Bear, <i>Quercus ilicifolia</i> (1965)	4'	60'	75'	Dawes Arboretum, Newark, Ohio. Gilbert F. Dobbs, Columbus.
*Bebb, <i>Quercus xbebbiana</i> (1965)	7'5"	82'	76'	Orion, Oakland County, Michigan. Paul W. Thompson, Birmingham.
Black, <i>Quercus velutina</i> (1964)	22'3"	125'	85'	Warrensville Heights, Ohio. Russell Vernon, Warrensville Heights.
California Black, <i>Quercus kelloggii</i> (1947)	36'	.....	.....	Yosemite National Park, California. John B. Wosky, Yosemite National Park.
Blackjack, <i>Quercus marilandica</i> (1965)	11'6"	47'	76'	Near Wakita, Oklahoma. Lyle L. Byfield, Wakita.
Blue, <i>Quercus douglasii</i> (1966)	11'3"	80'	43'	Near Rushing Hill Lookout, Tuolumne County, California. Chester O. Stone, Sonora.
Bluejack, <i>Quercus incana</i> (1964)	6'2"	51'	52'	Near Fairfield, Texas. David Lott, Fairfield.
*Bottom, <i>Quercus xcruncinata</i> (1966)	10'4"	85'	75'	Heathwood Park, Kansas City, Kansas. Kendall Laughlin, Chicago, Illinois.
Bur, <i>Quercus macrocarpa</i> (1965)	20'9"	122'	107'	Algonac, St. Clair County, Michigan. J. Laurie Algonac, Birmingham; Paul W. Thompson, Birmingham.
*Bushes, <i>Quercus xbushii</i> (1965)	9'1"	64'	70'	Forest Park, St. Louis, Missouri. Kendall Laughlin, Chicago, Illinois.
*Caldwell, <i>Quercus xcolumnaris</i> (1966)	1'11"	46'	33'	Clayton F. Smith Forest Preserve, Chicago, Illinois. Kendall Laughlin, Chicago.
California Scrub, <i>Quercus dumosa</i> (1955)	13'5"	33'	55'	San Luis Obispo County, California. Woodbridge Metcalf, Berkeley.
Chapman, <i>Quercus chapmanii</i> (1963)	4'2"	58'	33'	Ocala National Forest, Florida. Robert W. Simons, Gainesville.
Cherrybark, <i>Quercus falcata</i> var. <i>pagodaefolia</i> (1954)	24'1"	110'	80'	Near Cumberstone, Maryland. S. Glidden Baldwin, Danville, Illinois.
Chestnut, <i>Quercus prinus</i> (1956)	22'3"	95'	108'	Easton, Maryland. Robert G. Henry, Myrtle Grove.
Chinkapin, <i>Quercus muehlenbergii</i> (1956)	19'6"	83'	80'	Near Freidensberg, Pennsylvania. Paul M. Felton, Norristown.
* <i>Quercus muehlenbergii</i> x <i>stellata</i> (1966)	3'9"	46'	41'	Swope Park, Kansas City, Missouri. Kendall Laughlin, Chicago, Illinois.
Dwarf Chinkapin, <i>Quercus prinoides</i> (1965)	4'10"	33'	50'	Swope Park, Kansas City, Missouri. Kendall Laughlin, Chicago, Illinois.
*Deam, <i>Quercus xdeamii</i> (1954)	8'	85'	50'	Near Bluffton, Indiana. S. Glidden Baldwin, Danville, Illinois.
Durand, <i>Quercus durandii</i> (1965)	16'6"	139'	69'	Noxubee National Wildlife Refuge, Mississippi. Eugene Cypert and Burton S. Webster, Paris, Tennessee.
Englemann, <i>Quercus englemannii</i> (1955)	10'3"	85'	110'	Pasadena, California. Woodbridge Metcalf, Berkeley.
* <i>Quercus xfilialis</i> (1966)	3'4"	54'	49'	Poplar Bluff, Missouri. Kendall Laughlin, Chicago, Illinois.
*Fink, <i>Quercus xpalaeolithicola</i> (1966)	4'4"	49'	25'	Clayhole Woods, Calumet City, Illinois. Kendall Laughlin, Chicago.
Gambel, <i>Quercus gambelii</i> (1954)	18'3"	47'	85'	Gila National Forest, New Mexico. Dahl J. Kirkpatrick, Albuquerque.
*Hawkins, <i>Quercus xhawkinsiae</i> (1966)	9'5"	90'	57'	Dunes State Park, Indiana. Kendall Laughlin, Chicago, Illinois.
*Jacks, <i>Quercus xjackiana</i> (1965)	18'4"	86'	100'	Near Durand, Michigan. W. Bronson, Owosso, and P. W. T. son, Birmingham.
Laurel, <i>Quercus laurifolia</i> (1958)	20'	84'	102'	Darlington, South Carolina. W. J. Barker, Clemson.
*Lea, <i>Quercus xleana</i> (1966)	9'8"	68'	72'	Kansas City, Missouri. Kendall Laughlin, Chicago, Illinois.

Species and Year Reported	Circumference at 4½ feet	Height	Spread	Location of Tree and Nominator
Live, <i>Quercus virginiana</i> (1956)	35'	78'	168'	Near Hahnville, Louisiana. Charles Genella, New Orleans.
California Live, <i>Quercus agrifolia</i> (1951)	24'10"	108'	129'	Chiles Va Mey, Napa County, California. Woodbridge Metcalf, Berkeley.
Canyon Live, <i>Quercus chrysolepis</i> (1966)	32'5"	67'	109'	Stanislaus National Forest, California. O. A. F. Sapousek; D. J. Schroedel, Groveland.
Interior Live, <i>Quercus wislizenii</i> (1945)	20'	100'	100'	Near Sacramento, California. Arthur J. Teller, Del Paso Heights.
Lyrarpa <i>Quercus xmegaleia</i> (1966)	11'7"	85'	80'	Big Oak Tree State Park, Missouri. Kendall Laughlin, Chicago, Illinois.
* <i>Quercus xmutabilis</i> (1966)	11'7"	127'	83'	Big Oak Tree State Park, Missouri. Kendall Laughlin, Chicago, Illinois.
Nuttall, <i>Quercus nuttallii</i> (1965)	12'3"	120'	82'	Clay County, Mississippi. James B. Whitson, West Point.
*Oracle, <i>Quercus xmoreha</i> (1954)	8'8"	30'	40'	San Bernadino National Forest, California. Donald R. Bauer, San Bernadino National Forest.
Overcup, <i>Quercus lyrata</i> (1949)	15'5"	114'	72'	Patuxent Wildlife Refuge, Maryland. Karl E. Pfeiffer, Annapolis.
Pin, <i>Quercus palustris</i> (1955)	16'	135'	135'	Saint Davids, Pennsylvania. J. W. Ritter, Saint Davids.
Northern Pin, <i>Quercus ellipsoidalis</i> (1961)	10'9"	78'	82'	Menominee Indian Reservation, Shawano County, Wisconsin. Robert L. Miles, Shawano.
Post, <i>Quercus stellata</i> (1945)	13'9"	80'	103'	Charlotte County, Virginia. F. C. Pederson (deceased).
Northern Red, <i>Quercus rubra</i> (1965)	26'4"	78'	104'	Ashford, Connecticut. E. A. Richardson, Glastonbury; Edgar P. Wyman, Storrs.
Southern Red, <i>Quercus falcata</i> var. <i>falcata</i> (1951)	24'1"	122'	132'	Cumberstone, Maryland. F. W. Besley (deceased).
Scarlet, <i>Quercus coccinea</i> (1963)	15'9"	102'	110'	Swarthmore, Pennsylvania. Mark Robinson, Media.
*Schuette, <i>Quercus xschuettei</i> (1964)	17'9"	103'	107'	Rochester, Michigan. P. Sturman, Utica. Paul W. Thompson, Birmingham.
Shingle, <i>Quercus imbricaria</i> (1965)	18'1"	80'	80'	Wayne County, Ohio. John Aughanbaugh, Columbus.
Shumard, <i>Quercus shumardii</i> var. <i>shumardii</i> (1964)	15'11"	131'	98'	Beall Woods, Rochester, Wabash County, Illinois. Kendall Laughlin, Chicago.
Swamp chestnut, <i>Quercus michauxii</i> (1961)	20'9"	130'	100'	Near Urania, Louisiana. Glen F. Tannehill, Urania.
Swope, <i>Quercus xdiscreta</i> (1966)	6'9"	45'	42'	Swope Park, Jackson County, Kansas City, Missouri. Kendall Laughlin, Chicago, Illinois.
Turkey, <i>Quercus laevis</i> (1964)	8'	63'	50'	Ocala National Forest, Florida. Robert W. Simons, Gainesville.
Water, <i>Quercus nigra</i> (1960)	20'3"	77'	100'	Near Center, Texas. E. H. Lawson, Center.
White, <i>Quercus alba</i> (1945)	27'8"	95'	165'	State Park, Wye Mills, Maryland. F. W. Besley (deceased).
California White, <i>Quercus lobata</i> (1951)	27'9"	125'	.....	Near Middletown, Lake County, California. Woodbridge Metcalf, Berkeley.
Oregon White, <i>Quercus garryana</i> (1945)	25'6"	120'	.....	Mendocino National Forest, California. H. G. Abbott, Orono, Maine.
Swamp White, <i>Quercus bicolor</i> (1964)	18'1"	60'	107'	Near Johnstown, New Jersey. Louis and Eileen E. Hand, New Lisbon.
Willow, <i>Quercus phellos</i> (1954)	21'2"	118'	106'	Queenstown, Eastern Shore, Maryland. S. Glidden Baldwin, Danville, Illinois; Fred W. Besley (deceased).
<b>OLEANDER</b>				
Common, <i>Nerium oleander</i> (1963)	5'7"	22'	16'	Phoenix, Arizona. Vic. H. Household, Phoenix.
<b>OSAGE-ORANGE</b>				
<i>Maclura pomifera</i> (1955)	19'4"	66'	70'	Near Carmichael, Maryland. F. W. Besley (deceased).
<b>METTO</b>				
Cabbage, <i>Sabal palmetto</i> (1965)	3'9"	90'	12'	Highlands Hammock State Park, Florida. Harold J. Nett, Detroit, Michigan.

This Louisiana monarch, a Southern Red Oak, was runnerup to the Maryland champion in Sudley



Champ Blue Spruce in Gunnison National Forest, in Colorado



Species and Year Reported	Circumference at 4½ feet	Height	Spread	Location of Tree and Nominator
<b>PAULOWNIA</b>				
Royal, <i>Paulownia tomentosa</i> (1965)	18'	40'	40'	Portsmouth, Scioto County, Ohio. Conrad Roth, Columbus.
<b>PAWPAW</b>				
<i>Asimina triloba</i> (1954)	4'9"	25'	32'	Lancaster, Pennsylvania. John D. Kendig, Manheim.
<b>PEAR</b>				
<i>Pyrus communis</i> (1966)	11'1"	50'	43'	Clawson, Oakland County, Michigan. P. W. Thompson, Birmingham.
<b>PECAN</b>				
<i>Carya illinoensis</i> (1945)	21'4"	135'	145'	Assumption Parish, Louisiana. Sam, Mims, Baton Rouge.
<b>PERSIMMON</b>				
Common, <i>Diospyros virginiana</i> (1954)	13'	80'	74'	Near Johnson, Indiana. W. B. Ward, Lafayette.
Texas, <i>Diospyros texana</i> (1965)	5'7"	26'	31'	Uvalde, Texas. William Graves, Uvalde.
<b>PINE</b>				
Bristlecone, <i>Pinus aristata</i> (1954)	37'7"	40'	45'	"The Patriarch." Inyo National Forest, California. A. E. Noren, Big Pine.
Coulter, <i>Pinus coulteri</i> (1954)	17'	144'	40'	Angeles National Forest, California. Will H. Thrall, Alhambra.
Digger, <i>Pinus sabiniana</i> (1960)	15'10"	155'	60'	Near Coalinga, Fresno County, California. Hubert S. Mund, Coalinga.
Eastern White, <i>Pinus strobus</i> (1962)	17'11"	151'	48'	Brule River State Forest, Wisconsin. W. E. Scott, Madison.
Foxtail, <i>Pinus balfouriana</i> (1965)	22'10"	35'	20'	Inyo National Forest, California. Stephen F. Arno, Missoula, Montana.
Jack, <i>Pinus banksiana</i> (1963)	6'6"	91'	21'	Superior National Forest, Minnesota. LaCroix Ranger District, Ely.
Jeffrey, <i>Pinus jeffreyi</i> (1964)	20'3"	197'	54'	Sierra National Forest, California. Robert W. Kirkpatrick, Sanger.
Knobcone, <i>Pinus attenuata</i> (1962)	10'4"	98'	43'	Siskiyou National Forest, Oregon. Peter A. Theisen, Brookings.
Limber, <i>Pinus flexilis</i> (1945)	24'5"	44'	50'	Cache National Forest, Utah. Wilford D. Porter, Logen.
Loblolly, <i>Pinus taeda</i> (1955)	16'6"	128'	64'	Near Ammon, Virginia. Ralph G. Turner, Amelia.
Lodgepole, <i>Pinus contorta</i> (1963)	19'8"	110'	37'	San Bernardino National Forest, California. Miles Gulick, Fawnskin.
Longleaf, <i>Pinus palustris</i> (1955)	10'9"	113'	40'	Autauga County, Alabama. Robert M. Loughridge, Selma.
Monterey, <i>Pinus radiata</i> (1954)	13'7"	165'	75'	Near Napa, California. Woodbridge Metcalf, Berkeley.
Pinyon, <i>Pinus edulis</i> (1954)	11'3"	33'	44'	La Sal National Forest, Utah. Owen DeSpain, Moab.
Pitch, <i>Pinus rigida</i> (1960)	8'3"	97'	36'	Mays Landing, New Jersey. Bob and Frank Hirst, Northfield.
Pond, <i>Pinus serotina</i> (1955)	7'5"	70'	48'	Near Laurel, Maryland. F. W. Besley (deceased).
Ponderosa, <i>Pinus ponderosa</i> (1945)	27'1"	162'	.....	Pringle Falls Experimental Forest, near Lapine, Oregon. Donald F. McKay, Portland.
Ponderosa, <i>Pinus ponderosa</i> (tallest) (1957)	14'11"	246'	.....	Siskiyou National Forest, Oregon. G. L. Hayes, Fort Collins, Colorado.
Red, <i>Pinus resinosa</i> (1962)	8'10"	125'	33'	Brule River State Forest, Las County, Wisconsin. W. L. Scott, Madison.
Sand, <i>Pinus clausa</i> (1962)	6'11"	91'	36'	Ocala National Forest, Florida. John H. Courtenay, Tallahassee.

Species and Year Reported	Circumference at 4½ feet	Height	Spread	Location of Tree and Nominator
Scotch, <i>Pinus sylvestris</i> (1965)	10'1"	60'	60'	Near Apple Creek, Wayne County, Ohio. John Aughanbaugh, Columbus.
Shortleaf, <i>Pinus echinata</i> (1954)	10'7"	146'	60'	Morganton, Burke County, North Carolina. A. H. Maxwell, Morganton.
Slash, <i>Pinus elliottii</i> (1962)	10'5"	119'	41'	Apalachicola National Forest, Florida. John H. Courtenay, Tallahassee.
Sugar, <i>Pinus lambertiana</i> (1966)	31'2"	170'	56'	Stanislaus National Forest, California. J. R. Hall, Sonora.
Table-Mountain, <i>Pinus pungens</i> (1961)	6'11"	40'	45'	Great Smoky Mountains National Park, Tennessee. Arthur Stupka, Gatlinburg.
Torrey, <i>Pinus torreyana</i> (1955)	17'	100'	118'	Carpenteria, California. Edward H. Scanlon, Santa Monica.
Virginia, <i>Pinus virginiana</i> (1963)	8'6"	77'	49'	Bay Ridge, Maryland. Colby Buxton Rucker, Arnold.
Western White, <i>Pinus monticola</i> (1954)	21'3"	219'	36'	Near Elk River, Idaho. A. B. Curtis, Boise.
Whitebark, <i>Pinus albicaulis</i> (1945)	19'	85'	60'	Grand Teton National Park, Wyoming. Charles J. Smith, Moose.
<b>PLANERTREE</b>				
<i>Planera aquatica</i> (1961)	4'3"	25'	45'	Spears League, Hardin County, Texas. Armand Yramatequi, Houston.
<b>PLUM</b>				
American, <i>Prunus americana</i> var. <i>americana</i> (1949)	5'	29'	33'	Near Steyer, Maryland. Karl E. Pfeiffer, Annapolis.
Canada, <i>Prunus nigra</i> (1959)	4'	41'	48'	Ferndale, Oakland County, Michigan. Paul W. Thompson, Birmingham.
Inch. <i>Prunus americana</i> var. <i>lanata</i> (1960)	1'10"	26'	24'	Quachita National Forest, Arkansas. Alan M. Anderson, Hot Springs National Park; Kendall Laughlin, Chicago, Illinois.
Wildgoose, <i>Prunus munsoniana</i> (1966)	3'10"	14'	30'	Kansas City, Missouri. Kendall Laughlin, Chicago, Illinois.
<b>POISON-SUMAC</b>				
<i>Toxicodendron vernix</i> (1965)	1'2"	31'	30'	Lakeville, Oakland County, Michigan. Paul W. Thompson, Birmingham.
<b>PONDCEPRESS</b>				
<i>Taxodium distichum</i> var. <i>nuttans</i> (1965)	3'1"	56'	9'	Dawes Arboretum, near Newark, Ohio. John Aughanbaugh and William Mitchell, Columbus.
<b>POPLAR—(See also Cottonwood)</b>				
Balsam, <i>Populus balsamifera</i> var. <i>balsamifera</i> (1959)	11'11"	89'	78'	Cornell, Delta County, Michigan. Jacob Broderson, Ralph.
<b>POSSUMHAW</b>				
<i>Ilex decidua</i> (1966)	1'	24'	9'	Big Oak Tree State Park, Missouri. Kendall Laughlin, Chicago, Illinois.
<b>PRICKLY-ASH</b>				
Common, <i>Zanthoxylum americanum</i> (1954)	1'4" (at base)	30'	.....	Homochitto National Forest, Mississippi. Herbert P. Rice, Rolling Fork.
<b>REDBAY</b>				
<i>Persea borbonia</i> (1963)	8'6"	53'	50'	Near Conroe, Texas. Ralph Childs, Conroe.
<b>REDBUD</b>				
Eastern, <i>Cercis canadensis</i> (1966)	8'3"	.....	46'	Dayton, Ohio. C. C. Littell, Jr., Dayton.

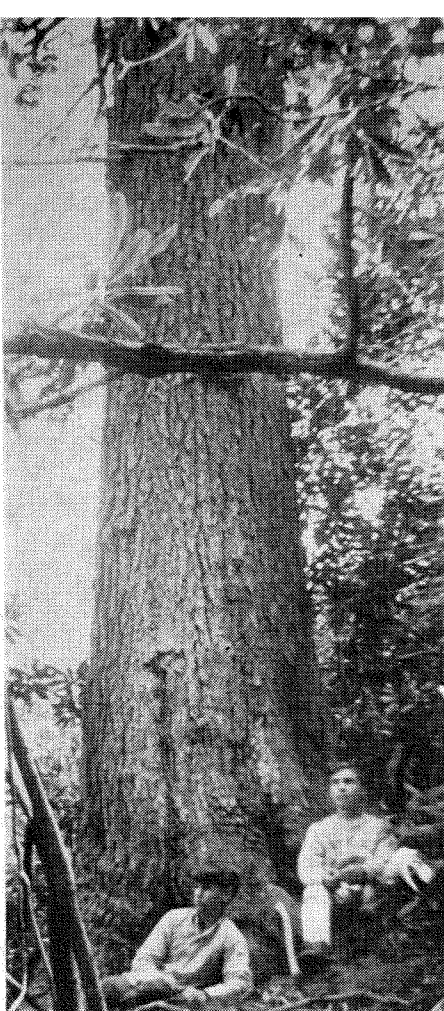


The Liberty Yellow Poplar located at Annapolis, Md.



Species and Year Reported	Circumference at 4½ feet	Height	Spread	Location of Tree and Nominator
<b>REDWOOD</b>				
Sequoia sempervirens (1963)	44'	368'	.....	"World's Tallest Tree." Redwood Creek, Humboldt County, California. Paul Z. Zahl, Washington, D. C.
<b>RHODODENDRON</b>				
Pacific, Rhododendron macrophyllum (1956)	2'5"	27'	27'	Honeyman State Park, near Florence, Oregon. F. LeRoy Spangler, Medford.
Rosebay, Rhododendron maximum (1963)	4'9"	18'	18'	Nantahala National Forest, North Carolina. James H. Patric, Dil-lard, Georgia.
<b>ROYALPALM</b>				
Florida, Roystonea elata (1954)	4'9"	100'	12'	Collier Seminole State Park, Florida. Wilber F. Smith, South Norwalk, Connecticut.
<b>SASSAFRAS</b>				
Sassafras albidum (1954)	16'	88'	68'	Owensboro, Kentucky. Mrs. O. W. Rash, Owensboro.
<b>SEAGRAPE</b>				
Coccoloba uvifera (1965)	6'8"	31'	37'	Hugh Taylor Birch State Park, Florida. Harold J. Nett, Detroit, Michigan.
<b>SEQUOIA</b>				
Giant, Sequoia gigantea (1961)	83'11"	272'	90'	"General Sherman" Sequoia Na-tional Park, California. Isabelle F. Story (deceased).
<b>SERVICEBERRY</b>				
Allegheny, Amelanchier laevis (1963)	4'10"	61'	39'	East Lansing, Michigan. C. E. Lewis, East Lansing.
Downy, Amelanchier arborea (1966)	9'9"	72'	48'	Near Standish, Michigan. Paul W. Thompson, Birmingham.
Pacific, Amelanchier florida (1954)	2'9"	.....	.....	Near Lyons, Oregon. Oliver V. Matthews, Salem.
Roundleaf, Amelanchier san-guinea (1965)	10"	27'	13'	Haven Hill Woods near Highland, Michigan. Paul W. Thompson, Birmingham.
<b>SILVERBELL</b>				
Carolina, Halesia carolina var. carolina (1965)	1'9"	38'	23'	Dawes Arboretum near Newark, Ohio, John Aughanbaugh, Colum-bus.
Mountain, Halesia carolina var. monticola (1945)	11'9"	.....	.....	Great Smoky Mountains National Park, Tennessee. Stanley A. Cain, Washington.
Two-wing, Halesia diptera (1964)	1'8"	29'	18'	Shepherd, Texas. John Goldman, Lufkin.
<b>SMOKETREE</b>				
American, Cotinus obovatus (1963)	2'6"	33'	18'	Dawes Arboretum near Newark, Ohio. John Aughanbaugh and William Mitchell, Columbus.
<b>SOAPBERRY</b>				
Western, Sapindus drummondii (1964)	7'4"	54'	52'	Corsicana, Texas. C. R. Morgan, Fairfield.
<b>SOURWOOD</b>				
Oxydendrum arboreum (1961)	7'7"	80'	40'	Great Smoky Mountains Nation-al Park, Tennessee. Arthur Stup-ka, Gatlinburg.
<b>SPRUCE</b>				
Black, Picea marina (1963)	11'9"	75'	18'	Superior National Forest, Minne-sota. Russell E. McDonald, For-est Center.

Species and Year Reported	Circumference at 4½ feet	Height	Spread	Location of Tree and Nominator
Blue, Picea pungens (1964)	15'8"	126'	36'	Gunnison National Forest, Colo-rado. James A. Lees, Gunnison.
Brewer, Picea breweriana (1964)	13'8"	170'	39'	Siskiyou National Forest, Ore-gon. Robert J. Boston and J. Elwin Keatley, Cave Junction.
Engelmann, Picea engelmannii (1963)	20'7"	140'	34'	Williamette National Forest, Ore-gon. Marston J. Kuehne, De-troit.
Red, Picea rubens (1965)	13'10"	106'	45'	Great Smoky Mountains National Park, North Carolina. Landon Ray, Asheville.
Sitka, Picea sitchensis (1964)	41'8"	214'	50'	Olympic National Park, Washing-ton. Robert L. Wood, Poulsbo; Stanley McComas.
White, Picea glauca (1963)	10'6"	116'	27'	Superior National Forest, Minne-sota. Gunflint Ranger District, Grand Marais.
<b>SUGARBERRY</b>				
Celtis laevigata (1966)	8'1"	48'	76'	Hot Springs National Park, Ar-kansas. Kendall Laughlin, Chi-cago, Ill.
<b>SUMAC</b>				
Poison (see Poison-Sumac) Shining, Rhus glabra (1962)	2'	27'	21'	Fairfield, Texas. David Lott, Fairfield.
Smooth, Rhus copallina (1964)	2'6" (at 5')	21'	26'	Near New Eddyville, Kentucky. Henry Converse, Henderson.
Staghorn, Rhus typhina (1960)	3'4"	26'	26'	Clawson, Michigan. H. DeVries, Clarkston, and Paul W. Thomp-son, Birmingham.
<b>SWAMP-PRIVET</b>				
Forestiera acuminata (1962)	2'2"	28'	31'	Big Oak Tree State Park, Mis-souri. Kendall Laughlin, Chi-cago.
<b>SWEETGUM</b>				
Liquidambar styraciflua (1954)	17'10"	118'	81'	New Madrid, Missouri. Kendall Laughlin. Chicago, Illinois.
<b>SWEETLEAF</b>				
Common, Symlocos tinctoria (1963)	17'	25'	15'	W. Goodrich Jones State Forest, near Conroe, Texas. Andrew W. Blake, Montgomery.
<b>SYCAMORE</b>				
American, Platanus occiden-talis (1957)	32'10"	80'	102'	Near South Bloomfield, Ohio. Charles M. Whelden, Worthing-ton.
California, Platanus racemosa (1945)	27'	116'	158'	Near Santa Barbara, California. Maunsell Van Rensselaer, Santa Barbara.
<b>TAMARACK</b>				
Larix laricina (1954)	11'5"	60'	60'	Chaplin, Connecticut. A. E. Moss, F. M. Callward, Storrs.
<b>TANOAK</b>				
Lithocarpus densiflorus (1954)	24'1"	80'	84'	Near Cazadero, California. A. F. Wallen, Oakland, California.
<b>TESOTA</b>				
Olneya tesota (1961)	12'5" (at 18")	46'	52'	Agua Caliente Hot Springs, Ari-zona. Vic H. Housholder, Phoe-nix.
<b>TORREYA</b>				
California, Torreya californica (1945)	14'10"	141'	39'	Near Mendocino, California. Ed-ward Simons, San Francisco.
<b>TREE SPARKLEBERRY</b>				
Vaccinium arboreum (1964)	1'7"	20'	17'	Jones State Forest near Conroe, Texas. John Goldman, Lufkin; Michael McCoy, Conroe.

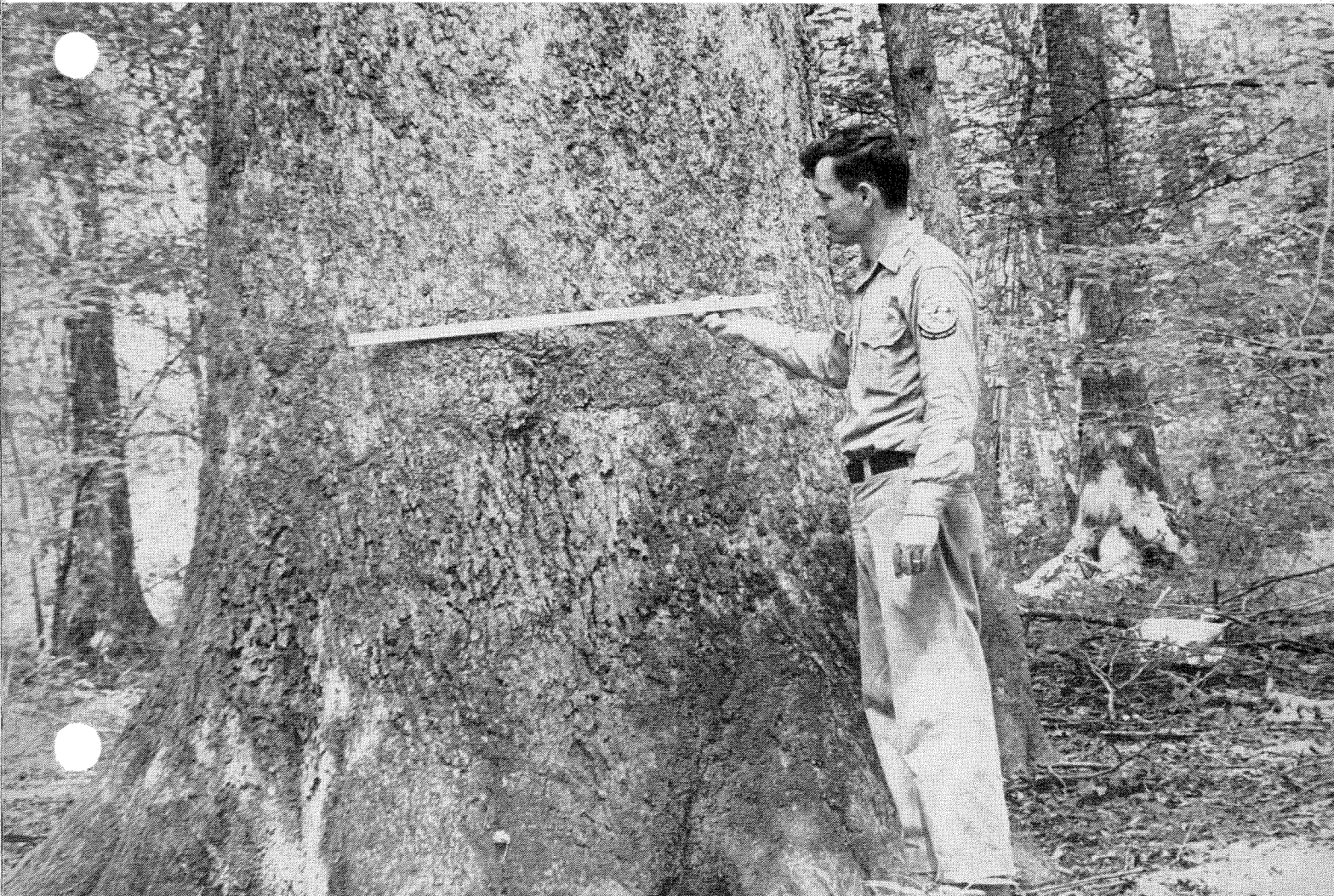


The Champion Red Spruce in U.S.A., Great Smoky Mountains National Park

Species and Year Reported	Circumference at 4½ feet	Height	Spread	Location of Tree and Nominator
<b>TUPELO</b>				
Black (Blackgum), <i>Nyssa sylvatica</i> (1961)	15'9"	130'	100'	Near Urania, Louisiana. Glen F. Tannehill, Urania.
Black (Blackgum), <i>Nyssa sylvatica</i> (1965)	15'9"	130'	65'	Noxubee National Wildlife Refuge, Brooksville, Mississippi. Burton S. Webster, James C. Craig and Charles Goudelock, Brooksville.
Water, <i>Nyssa aquatica</i> (1961)	4'10"	54'	24'	Dunklin County, Missouri. Kendall Laughlin, Chicago, Illinois; R. E. McDermott, Columbia, Missouri.
<b>WAHOO</b>				
Eastern, <i>Euonymus atropurpureus</i> (1961)	10"	17'	13'	Manhattan, Kansas. Harold H. Munger, Manhattan.
<b>WALNUT</b>				
Arizona, <i>Juglans major</i> (1962)	9'10"	60'	117'	Near Winkleman, Arizona. Eddie Meier, Scottsdale.
Black, <i>Juglans nigra</i> (1948)	20'3"	108'	128'	Anne Arundel County, Maryland. F. W. Besley (deceased).
Hinds, <i>Juglans hindeii</i> (1951)	18'7"	95'	.....	Near Arkuckle, Colusa County, California. Woodbridge Metcalf, Berkeley.
California, <i>Juglans californica</i> (1947)	17'6"	118'	137'	Santa Rosa, California. Mrs. Julia Miller, Santa Rosa.
<b>WILLOW</b>				
Balsam, <i>Salix pyrifolia</i> (1964)	11"	15'	7'	Sugar Island, Chippewa County, Michigan. Jarl Hiltunen, Ann Arbor.
Bebb, <i>Salix bebbiana</i> (1960)	2'	31'	18'	Near Maple City, Michigan. Paul W. Thompson, Birmingham.
Black, <i>Salix nigra</i> (1960)	26'1"	85'	79'	Traverse City, Michigan. Howard Harvey, Acme.
Crack, <i>Salix fragilis</i> (1964)	23'	108'	100'	Near Utica, Michigan. J. Nett, Detroit; Paul W. Thompson, Birmingham.
Coastal Plain, <i>Salix caroliniana</i> (1965)	2'8"	46'	21'	Glenwood, Arkansas. Kendall Laughlin, Chicago, Illinois.
Hooker, <i>Salix hookeriana</i> (1964)	4'	48'	27'	Near Cannon Beach, Clatsop County, Oregon. George M. Hansen, Portland.
Meadow, <i>Salix petiolaris</i> (1965)	1'1"	31'	14'	Dunes State Park, Indiana. Kendall Laughlin, Chicago, Illinois.
Peachleaf, <i>Salix amygdaloides</i> (1965)	7'4"	75'	51'	Black Partridge Woods, Cook County, Illinois. Kendall Laughlin, Chicago.
Pussy, <i>Salix discolor</i> (1965)	4'	32'	31'	Chechupinqua Woods, Chicago, Illinois. Kendall Laughlin, Chicago.
White, <i>Salix alba</i> var. <i>vitellina</i> (1959)	30'7"	58'	96'	Near Commerce, Oakland County, Michigan. Paul W. Thompson, Birmingham.
Sandbar, <i>Salix interior</i> (1965)	1'	28'	18'	Near Utica, Macomb County, Michigan. Paul W. Thompson, Birmingham; Robert Erwin, Rochester.
Shining, <i>Salix lucida</i> (1960)	5'9"	58'	51'	Traverse City, Michigan. Paul W. Thompson, Birmingham.
Weeping, <i>Salix babylonica</i> (1965)	19'7"	95'	93'	Beverly Hills, Oakland County, Michigan. Paul W. Thompson, Birmingham.
<b>WINTERBERRY</b>				
Common, <i>Ilex verticillata</i> (1965)	10"	16'	14'	Near Long Lake, Washtenaw County, Michigan. Paul W. Thompson, Birmingham.
Mountain, <i>Ilex montana</i> (1954)	1'2"	18'	8'	Great Smoky Mountains National Park, Tennessee. S. Glidden Baldwin, Danville, Illinois.
<b>WITCHHAZEL</b>				
<i>Hamamelis virginiana</i> (1954)	2'1"	25'	25'	Windom, North Carolina. James Hutchins, Windom.

Species and Year Reported	Circumference at 4½ feet	Height	Spread	Location of Tree and Nominator
<b>YAUPO</b>				
<i>Ilex vomitoria</i> (1964)	3'10"	32'	37'	Near Devers, Texas. John A. Haislet, College Station.
<b>YELLOW-POPLAR</b>				
<i>Liriodendron tulipifera</i> (1949)	26'6"	83'	98'	"Liberty Tree." St. John's College Campus, Annapolis, Maryland. F. W. Besley (deceased).
<i>Liriodendron tulipifera</i> (1961)	24'3"	110'	119'	Amelia, Virginia. Ralph G. Turner, Amelia.
<b>YELLOWWOOD</b>				
<i>Cladrastis lutea</i> (1964)	15'7" (at 3')	58'	70'	Morrisville, Pennsylvania. John T. McNeill, Philadelphia.
<b>YEW</b>				
Pacific, <i>Taxus brevifolia</i> (1959)	14'8"	60'	57'	Near Mineral, Lewis County, Washington. Bruce Malcolm, Lenard Barnhouse, August Storkman and Robert Levitt, Tacoma.
*Hybrid				

Mississippi claims a champion Black Gum (*Nyssa sylvatica*)—found in Noxubee National Wildlife Refuge, Brooksville





## **DISTINGUISHED PUBLIC SERVICE SINCE 1875**

The American Forestry Association, organized in 1875, has been a national influence since its start. From the very beginning, the primary purpose of the Association has been to conserve and develop America's forests and related resources of soil, water and wildlife for the good of all Americans.

To accomplish this purpose, the Association has created enlightened public appreciation of those resources; has stimulated public action and built public support for the protection of the country against forest fires and flood, for the prevention and control of soil erosion, for the development of conservation policies in forest and range management, for the control of forest insects and diseases, for the preservation of wildlife, and for the allocation and maintenance of outdoor recreation areas. Greater National security, industrial strength, employment and enjoyment opportunities are natural results of such activities.

The American Forestry Association's record is one of *public service*, as for example, its periodic Forest Congress, its Trail Riders of the Wilderness program, its Annual Field Trip Meeting, and other gatherings. From an organization of a few hundred members, the Association has now tens of thousands of public-spirited men and women living in every state of the Union and in foreign countries throughout the world.

As a member of The American Forestry Association you will share in this public-spirited work and enjoy all benefits and privileges of membership.

**THE AMERICAN FORESTRY ASSOCIATION**

919 SEVENTEENTH STREET, N.W.

*Established 1875*

WASHINGTON, D. C. 20006