

A photograph of a man standing next to a large, moss-covered tree trunk in a forest. The man is wearing an orange jacket, dark pants, and a beanie. The tree trunk is thick and textured, with a large hollowed-out section. The background is filled with green foliage and trees.

National Register of

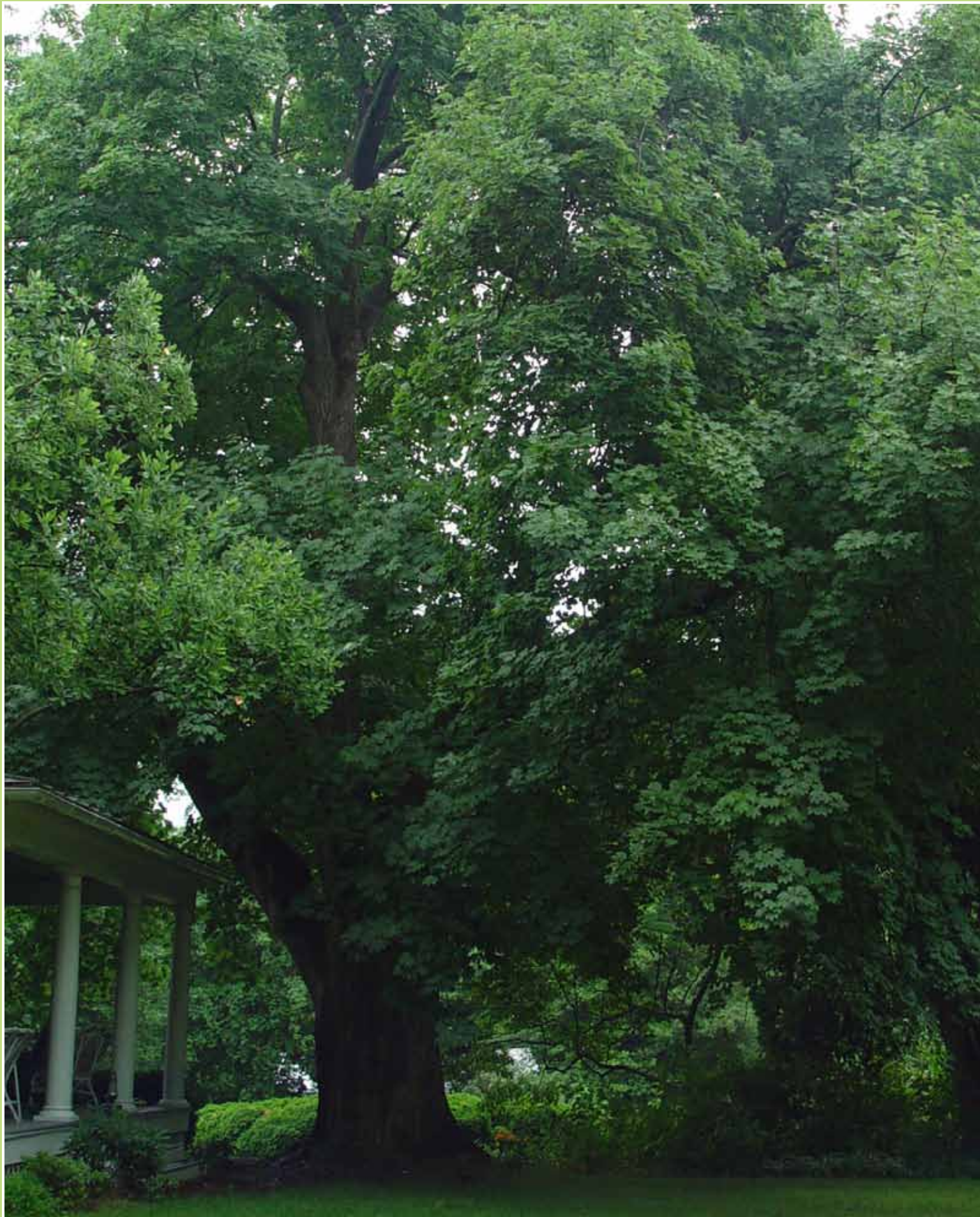
BIG TREES

2010

Species/Status		Year	Circumference" / Height' / Spread' / Points				Location		Nominator
Acacia									
Blackbrush	<i>Acacia rigidula</i>	1999	21	28	39	59	Glendale	AZ	Ken Morrow
Ailanthus									
Tree-of-heaven	<i>Ailanthus altissima</i> △	2009	244	55	48	311	Westmoreland	VA	B. Carmean, G. Williamson, Wilson
Alaska-Cedar									
	<i>Cupressus nootkatensis</i>	1979	451	126	27	584	Olympic NP	WA	Robert L. Wood, John Aho
Alder									
Arizona	<i>Alnus oblongifolia</i>	2007	169	111	72	298	Prescott NF	AZ	A. Allgood, D. Thornburg, H. Untiedt
European	<i>Alnus glutinosa</i> △	1992	114	72	41	196	Scott	IA	Keith Majors
Hazel	<i>Alnus serrulata</i> *	2005	46	60	28	113	Huntington	NY	Daniel Karpen
Hazel	<i>Alnus serrulata</i> *	2005	49	60	30	117	Huntington	NY	Daniel Karpen
Mountain	<i>Alnus incana ssp. tenuifolia</i>	1995	94	71	39	175	Umatilla NF	WA	Slim Stillman
Red	<i>Alnus rubra</i>	2005	288	87	100	400	Golden Gate NRA	CA	Eric Ettlinger
Sitka	<i>Alnus iridis ssp. sinuata</i>	1993	34	30	34	73	King	WA	Mike Lee
Speckled	<i>Alnus incana ssp. rugosa</i> *	2009	22	36	32	66	Monroe	NY	Richard Cook, Douglas Bassett
Speckled	<i>Alnus incana ssp. rugosa</i> *	2009	30	30	30	68	St. Clair	MI	Elwood B. Ehrle
White	<i>Alnus rhombifolia</i>	1986	149	92	40	251	Polk	OR	Maynard Dawson
Allthorn									
	<i>Koeberlinia spinosa</i>	1993	27	23	21	55	Boyce Thompson Arboretum	AZ	Robert and Glenda Zahner
Alvaradoa									
Mexican	<i>Alvaradoa amorphoides</i>	1983	53	35	30	96	Dade	FL	John C. Cordy, Jim Eggert
American-Hazel									
Hazelnut	<i>Corylus americana</i>	2009	40	35	35	84	Washtenaw	MI	Gail McPherson, Richard Pomorski
Anacahuita									
	<i>Cordia boissieri</i>	1995	75	25	38	110	Mercedes	TX	William MacWhorter
Anacua									
	<i>Ehretia anacua</i> *	2007	146	42	59	203	DeWitt	TX	Pat Dolan
	<i>Ehretia anacua</i> *	2007	141	55	46	208	Mission	TX	James Sherrill
Anise-Tree									
Florida	<i>Illicium floridanum</i>	1991	36	29	26	72	Perry	AL	Dr. Thomas Wilson
Anise-Tree									
Yellow	<i>Illicium parviflorum</i>	2009	9	18	9	29	Marion	FL	Jeff Overby
Apple									
Common	<i>Malus sylvestris</i> △	2009	164	42	49	218	Gila	AZ	Robert Fuller
Oregon crab									
	<i>Malus fusca</i> *	2003	90	48	55	152	Gifford Pinchot NF	WA	Robert Van Pelt
Oregon crab									
	<i>Malus fusca</i> *	2003	102	41	45	154	Gifford Pinchot NF	WA	Robert Van Pelt
Prairie crab									
	<i>Malus ioensis</i>	2009	27	21	27	55	Monroe	NY	Richard Cook, Douglas Bassett
Southern crab									
	<i>Malus angustifolia</i>	1996	82	27	54	123	Kent	MD	Eleanor P. Colston
Sweet crab									
	<i>Malus coronaria</i>	2006	98	39	30	145	Orange	VT	Leigh Wright
Araucaria									
Cunningham	<i>Araucaria cunninghamii</i> △	2008	132	71	37	212	San Dimas	CA	Deborah Day
Arborvitae									
Oriental	<i>Platycladus orientalis</i> * △	2009	88	54	28	149	Scioto	OH	Brian P. Riley
Oriental	<i>Platycladus orientalis</i> * △	2007	93	50	36	152	Saline	KS	Chip Miller

Species/Status		Year	Circumference" / Height/ Spread/ Points				Location		Nominator
Ash									
Berlandier	<i>Fraxinus berlandieriana</i>	1995	252	48	72	318	Los Fresnos	TX	Brian Sichel
Black	<i>Fraxinus nigra</i> *	2006	105	86	80	211	Manistee	MI	Andrew and Noah Sawyer
Black	<i>Fraxinus nigra</i> *	2009	111	90	49	213	Greene	VA	B. Carmean, G. Williamson, J. Kirwan
Black	<i>Fraxinus nigra</i> *	2006	106	94	55	214	Manistee	MI	Andrew and Noah Sawyer
Blue	<i>Fraxinus quadrangulata</i>	2005	155	120	132	308	Mason	KY	Kevin Galloway
Carolina	<i>Fraxinus caroliniana</i>	2006	63	80	31	151	Southampton	VA	Byron Carmean
Chihuahua	<i>Fraxinus papillosa</i>	2003	33	49	17	86	Coronado NF	AZ	David and Paul Thornburg
Fragrant	<i>Fraxinus cuspidata</i> *	2004	46	40	37	95	Coconino NF	AZ	David Thornburg
Goodding	<i>Fraxinus gooddingii</i>	1995	25	25	20	55	Coronado NF	AZ	Josh Tewksbury
Green	<i>Fraxinus pennsylvanica</i>	1981	271	98	104	395	Cass	MI	Andrew and Noah Sawyer
Gregg	<i>Fraxinus greggii</i>	2009	11	23	11	37	Big Bend NP	TX	Pete Smith
Lowell	<i>Fraxinus anomala</i> var. <i>lowellii</i>	2003	58	33	21	96	Prescott NF	AZ	David Thornburg, Harry Untiedt
Oregon	<i>Fraxinus latifolia</i>	1975	285	81	74	385	Portland	OR	Eldon Boge, Robert Heilman
Pumpkin	<i>Fraxinus profunda</i> *	2009	257	76	84	354	Fauquier	VA	Carmean, Williamson, Kirwan, Salzer
Pumpkin	<i>Fraxinus profunda</i> *	1995	188	150	77	357	Big Oak Tree SP	MO	Bruce Palmer
Texas	<i>Fraxinus texensis</i>	2001	78	65	59	158	Bandera	TX	Billy Walker
Two-petal	<i>Fraxinus dipetala</i>	1986	39	32	34	80	Lake	CA	Frank Callahan
Velvet	<i>Fraxinus velutina</i>	2007	256	78	76	353	Prescott NF	AZ	David Thornburg, Andy Allgood
White	<i>Fraxinus americana</i>	2006	246	124	107	397	Leelanau	MI	Andrew and Noah Sawyer
Aspen									
Bigtooth	<i>Populus grandidentata</i>	2005	169	93	51	275	Appleton	ME	Mike DeBonis
Quaking	<i>Populus tremuloides</i>	2007	152	130	36	291	Coronado NF	AZ	Mike and Sylvia Hallen
Avocado									
	<i>Persea americana</i> Δ	1999	185	72	59	272	Orange	CA	Art Cowley, Camille Newton
Baccharis									
Eastern	<i>Baccharis halimifolia</i> *	2007	25	14	20	44	Chesapeake	VA	Byron Carmean, Gary Williamson
Eastern	<i>Baccharis halimifolia</i> *	2009	28	14	17	46	Virginia Beach	VA	Carmean, Williamson, Butler
Baldcypress									
Common	<i>Taxodium distichum</i> *	2005	660	82	65	758	Holmes	MS	Norman Haigh, Barry Scott
Common	<i>Taxodium distichum</i> *	1981	647	96	74	762	Cat Island	LA	Jeff Hunt, Desmond Clapp
Montezuma	<i>Taxodium mucronatum</i>	1995	301	68	99	394	San Benito	TX	Sue Griffin
Barreta									
	<i>Helietta parvifolia</i>	1989	17	24	16	45	Lower Rio Grande Valley NWR	TX	Terry Rossignol
Basswood									
American	<i>Tilia americana</i>	2009	243	135	90	401	Charles	MD	Greg Zell, Rod Simmons
Carolina	<i>Tilia americana</i> var. <i>caroliniana</i> *	2001	124	107	60	246	Caddo Parish	LA	Ken Jeane
Carolina	<i>Tilia americana</i> var. <i>caroliniana</i> *	2009	118	111	70	247	Wakulla Springs SP	FL	George Apthorp
Carolina	<i>Tilia americana</i> var. <i>caroliniana</i> *	2009	165	73	53	251	Real	TX	Mark Duff
White	<i>Tilia americana</i> var. <i>heterophylla</i> *	2007	144	110	66	271	Union	GA	Jimmy Mock
White	<i>Tilia americana</i> var. <i>heterophylla</i> *	2009	149	103	81	272	St. Louis City	MO	Chip Tynan
Bay									
Red	<i>Persea borbonia</i>	1994	146	94	45	251	Hamilton	FL	Norman Nichols
Silk	<i>Persea humilis</i>	1991	66	41	39	117	Marion	FL	Robert W. Simons
Swamp	<i>Persea palustris</i>	2007	153	55	38	218	Newport News	VA	John Gray
Bayberry									
Northern	<i>Morella pensylvanica</i>	2009	25	21	20	51	Nassau	NY	Ralph Tiner
Odorless	<i>Morella inodora</i>	2007	15	27	16	46	Baldwin	AL	Harry Larsen, Fred Nation
Pacific	<i>Morella californica</i>	2003	66	35	39	111	Prairie Creek Redwoods SP	CA	Robert Van Pelt
Southern	<i>Morella cerifera</i>	2009	63	20	32	91	Hampton	VA	M. Anderson, B. Carmean, G. Williamson

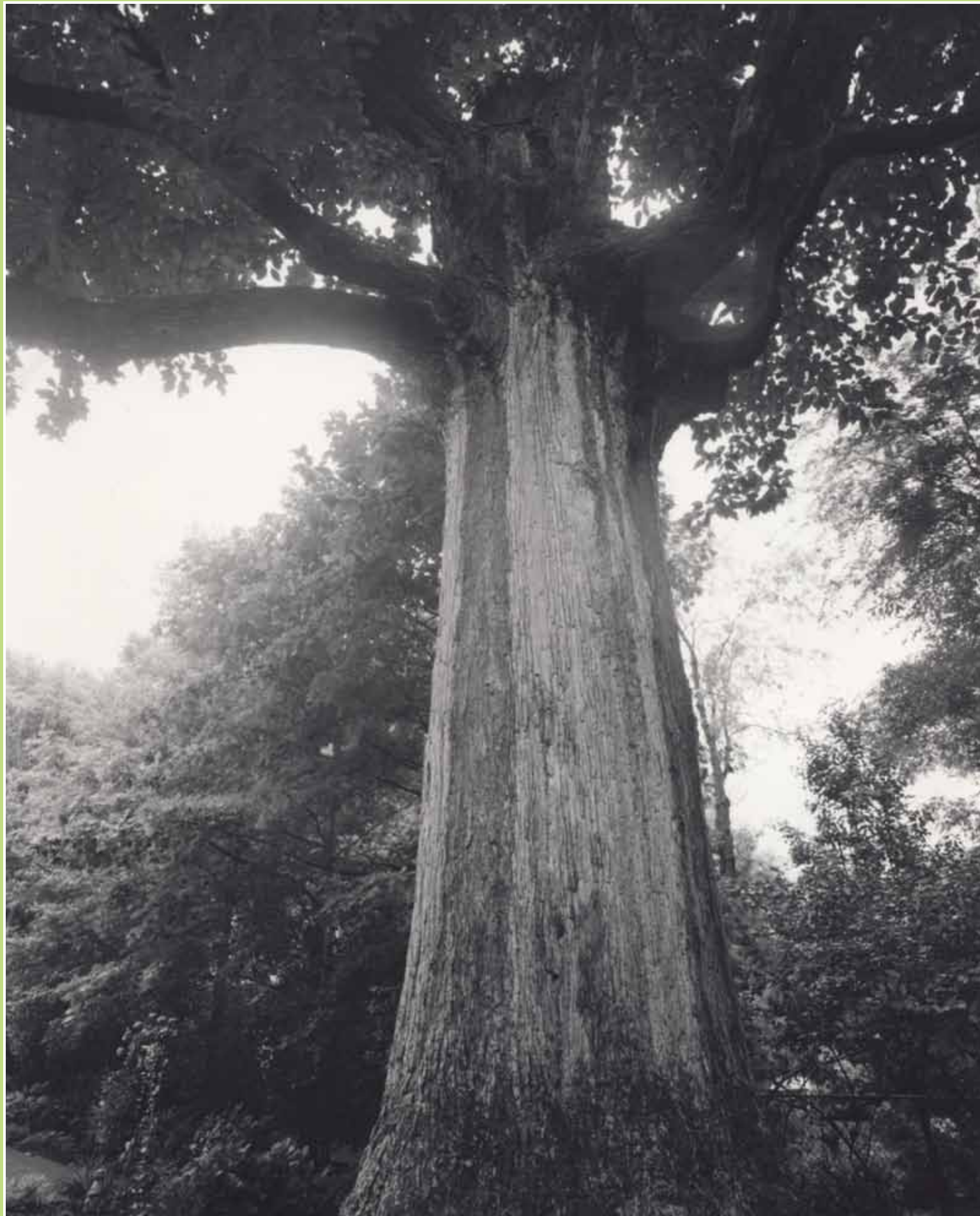
Species/Status		Year	Circumference" / Height/ Spread/ Points				Location		Nominator
Beech									
American	<i>Fagus grandifolia</i>	1995	290	112	103	428	Anne Arundel	MD	Gary Heinz
Birch									
Alaska paper	<i>Betula neolaskana</i>	2005	99	63	47	174	Trapper Creek	AK	Terrence P. Cooney
Gray	<i>Betula populifolia</i>	2007	92	49	59	156	Middle Township	NJ	Lyman Hoffman
Mountain paper	<i>Betula papyrifera</i> var. <i>cordifolia</i>	1973	115	67	80	202	Leelanau	MI	Elwood B. Ehrle
Paper	<i>Betula papyrifera</i>	2009	169	72	74	260	Hartford	CT	Frank Kaputa, Ed Richardson
River	<i>Betula nigra</i>	1981	208	105	112	341	Lawerence	TN	Dan and David Shires
Sweet	<i>Betula lenta</i>	1961	165	82	76	266	Hillsborough	NH	Philip Harvell, Erik and Kathleen Fey
Virginia roundleaf	<i>Betula uber</i>	1978	34	49	15	87	Jefferson NF	VA	Paul Shrauder
Water	<i>Betula occidentalis</i>	1973	113	53	46	178	Wallowa	OR	Maynard Dawson
Yellow	<i>Betula alleghaniensis</i>	2009	242	82	74	343	Kennebec	ME	Cathy Cook, Douglas Stevenson
Black-Mangrove									
	<i>Avicennia germinans</i>	2003	85	58	43	154	Monroe	FL	Jeffrey and Trudy Williams
Blackbead									
Catclaw	<i>Pithecellobium unguis-cati</i>	2007	173	78	93	274	Manatee	FL	T. Ann Williams, Vincent P. Condon
Florida keys	<i>Pithecellobium keyense</i>	1995	15	13	15	32	Monroe	FL	Joe Ideker
Texas ebony	<i>Ebenopsis ebano</i>	1991	171	50	64	237	McAllen	TX	Richard Salzer
Blackhaw									
Rusty	<i>Viburnum rufidulum</i> *	1985	64	25	32	97	Westmoreland	VA	Gregory Dean Stockton
Rusty	<i>Viburnum rufidulum</i> *	2009	65	27	39	102	Cherokee	TX	Joe Parrish
Smooth	<i>Viburnum prunifolium</i>	2007	62	26	35	97	Silver Spring	MD	Vincent Condon, Niko Reisinger
Bladdernut									
American	<i>Staphylea trifolia</i>	2008	15	28	22	49	Berrien	MI	A. Sawyer, N. Sawyer, G. Kerrigan, M. Ke
Bluewood									
	<i>Condalia hookeri</i>	1989	85	29	28	121	San Juan	TX	Joe Ideker
Boxelder									
	<i>Acer negundo</i>	2003	230	120	84	371	Monrovia	MD	Kevin Moore
Bucida									
	<i>Bucida buceras</i> Δ	1997	152	69	73	239	Dade	FL	Alice Warren-Bradley
Buckeye									
Bottlebrush	<i>Aesculus parviflora</i>	1993	41	14	25	61	Virginia Beach	VA	Richard Salzer
California	<i>Aesculus californica</i>	2001	176	46	60	237	Santa Cruz	CA	Jeff Reimer, Walter Mark
Ohio	<i>Aesculus glabra</i>	2007	176	73	68	266	DuPage	IL	Thomas L. Green
Painted son	<i>Aesculus sylvatica</i>	2009	77	60	46	149	Sussex	VA	Carmean, Beldenbaugh, Clontz, William-
Red	<i>Aesculus pavia</i>	1994	81	46	38	137	Roanoke	VA	William S. Hubbard
Texas	<i>Aesculus glabra</i> var. <i>arguta</i>	2006	59	39	35	107	Gillespie	TX	Robert Edmonson
Yellow	<i>Aesculus flava</i>	2007	296	94	69	407	Alleghany	VA	Dan Miles
Buckthorn									
California	<i>Rhamnus californica</i>	2003	29	23	39	62	Prescott NF	AZ	David and Judy Thornburg
Carolina	<i>Rhamnus caroliniana</i>	2001	40	25	24	71	Clarksville	TN	Phil and Claudette Brown
Cascara	<i>Rhamnus purshiana</i>	2006	104	39	62	159	Curry	OR	George Miller
European	<i>Rhamnus cathartica</i> Δ	2005	217	27	41	254	Halifax	NC	Sid Shearin
Hollyleaf	<i>Rhamnus crocea</i>	2007	52	16	18	73	Prescott NF	AZ	D. Thornburg, H. Untiedt, A. Allgood
Buckwheat-Tree									
	<i>Cliftonia monophylla</i>	2008	59	41	34	109	Wakulla	FL	Ace Haddock



Norway Maple, Harford, Maryland – Charles Day

Species/Status		Year	Circumference" / Height/ Spread/ Points				Location		Nominator
Bumelia									
Buckthorn	<i>Sideroxylon lycioides</i> *	2009	38	39	27	84	Norfolk	VA	Carmean, Williamson,Townson
Buckthorn	<i>Sideroxylon lycioides</i> *	1999	48	31	29	86	Nashville	TN	Mark S. Hackney
Gum	<i>Sideroxylon lanuginosum</i>	2007	87	55	56	156	Fort Worth	TX	Matthew and Michael Blevins
Saffron-plum	<i>Sideroxylon celastrinum</i>	1991	58	27	39	95	Lower Rio Grande Valley NWR	TX	William MacWhorter
Tough	<i>Sideroxylon tenax</i>	2009	38	41	39	89	Duval	FL	Ned D. Neenan
Burningbush									
Eastern	<i>Euonymus atropurpureus</i>	2002	90	40	34	139	St. Louis	MO	Lorri Grueber
Bustic									
Willow	<i>Sideroxylon salicifolium</i>	2009	54	57	18	116	Miami-Dade	FL	Juan Fernandez
Butternut									
	<i>Juglans cinerea</i>	2009	219	110	103	355	Newport News	VA	Lauren and John David Yoder
Button-Mangrove									
	<i>Conocarpus erectus</i>	2009	207	35	70	260	Monroe	FL	Andrew Sawyer
Buttonbush									
Common	<i>Cephalanthus occidentalis</i>	2009	81	21	17	106	Berrien	MI	Stephen Hodges
Byrsonima									
Key	<i>Byrsonima lucida</i>	1997	35	20	20	60	Monroe	FL	T. A. Williams, V. Lopez, V. Condo
Caesalpinia									
Mexican	<i>Caesalpinia mexicana</i>	1995	48	45	60	108	Weslaco	TX	Joe Ideker
California Fan Palm									
California fan palm	<i>Washingtonia filifera</i> *	1991	121	86	21	212	Sacramento State Capitol	CA	Robert Van Pelt, A. L. Jacobson
California fan palm	<i>Washingtonia filifera</i> *	1997	142	66	19	213	Sacramento State Capitol	CA	Art Cowley
California fan palm	<i>Washingtonia filifera</i> *	1991	144	68	18	217	Sacramento State Capitol	CA	Robert Van Pelt, A. L. Jacobson
California-Laurel									
	<i>Umbellularia californica</i>	1997	536	108	119	674	Mendocino	CA	Dave Grabner, Leo Martin
Camphor-Tree									
	<i>Cinnamomum camphora</i> Δ	2008	208	77	136	319	Grady	GA	Randy Kirksey
Canella									
	<i>Canella winterana</i>	1998	26	38	21	69	Monroe	FL	Joseph Nemec
Canotia									
	<i>Canotia holacantha</i>	2005	90	32	20	127	Mohave	AZ	John Carr, David Thornburg
Caper									
Jamaica	<i>Capparis cynophallophora</i>	2009	23	33	23	62	Monroe	FL	Bob Showler
Catalpa									
Northern	<i>Catalpa speciosa</i>	2003	293	82	90	398	Vanderburgh	IN	Thomas E. Westfall
Southern	<i>Catalpa bignonioides</i>	2000	271	88	68	376	Yalobusha	MS	J. Ferguson, J. Edwards, G. Byrd
Catclaw									
Gregg	<i>Acacia greggii</i>	1971	77	49	46	138	Red Rock	NM	Samuel Lamb
Wright	<i>Acacia greggii</i> var. <i>wrightii</i>	2006	91	33	41	134	Uvalde	TX	John K. Berry
Cercocarpus									
Alderleaf	<i>Cercocarpus montanus</i> *	1999	29	20	15	53	Wasatch-Cache NF	UT	Tony Dietz
Alderleaf	<i>Cercocarpus montanus</i> *	2009	31	21	18	57	Wasatch-Cashe NF	UT	Hal Jensen
Birchleaf	<i>Cercocarpus betuloides</i>	2009	12	14	15	30	Coconino NF	AZ	Andy Allgood, David Thornburg
Catalina	<i>Cercocarpus traskiae</i>	2003	30	18	25	54	Catalina Island Conservancy	CA	Art Cowley
Curlleaf	<i>Cercocarpus ledifolius</i> *	2009	133	25	35	167	Wasatch-Cashe NF	UT	Brian Challis
Curlleaf	<i>Cercocarpus ledifolius</i> *	2008	148	16	25	170	Fishlake NF	UT	B. Bonebrake, C. Colt, D. Page
Hairy	<i>Cercocarpus breviflorus</i>	1996	37	25	20	67	Mt. Wrightson	AZ	Robert Zahner, Sid Jackson
Chastetree									
Common	<i>Vitex agnus-castus</i> Δ	2009	123	28	40	161	Lancaster	TX	Matthew and Michael Blevins

Species/Status		Year	Circumference" / Height/ Spread/ Points				Location		Nominator
Cherry									
Alabama black	<i>Prunus alabamensis</i>	2006	31	49	28	87	Floyd	GA	Richard and Teresa Ware
Bitter	<i>Prunus emarginata</i>	2009	19	22	15	45	Coconino NF	AZ	David Thornburg, Andy Allgood
Black	<i>Prunus serotina</i>	2008	224	95	76	338	Tazewell	VA	Bill John Rhudy, Levi Rhudy
Catalina	<i>Prunus ilicifolia</i> ssp. <i>lyonii</i>	1996	115	43	45	169	Catalina Island Conservancy	CA	A. Douglas Propst, Bill Hartley
Common chokecherry	<i>Prunus virginiana</i>	1999	193	55	93	271	Baltimore	MD	Francis X. and Wendy L. Rurka
Escarpment	<i>Prunus serotina</i> var. <i>eximia</i>	2003	104	62	58	181	Real	TX	Lee Haile
Mahaleb	<i>Prunus mahaleb</i> Δ	1993	79	41	48	132	Lake Stevens	WA	Ron Brightman, Robert Van Pelt
Pin	<i>Prunus pensylvanica</i> *	1999	58	75	42	144	Great Smoky Mountains NP	TN	Gerald Shelton
Pin	<i>Prunus pensylvanica</i> *	2005	60	75	50	148	Kalamazoo	MI	Emma Pitcher, Elwood B. Ehrle
Southwestern black	<i>Prunus serotina</i> var. <i>rufula</i>	2004	136	66	50	215	Prescott NF	AZ	David Thornburg, Harry Untiedt
Sweet	<i>Prunus avium</i> Δ	1989	290	96	73	404	West Chester	PA	Maurice Hobaugh, P. & C. Youngblood
West Indian	<i>Prunus myrtifolia</i>	1989	73	41	23	120	Dade	FL	Carol Lippincott
Chestnut									
American	<i>Castanea dentata</i>	2005	288	70	70	376	Clarkston	WA	Wayne Bunce
Chinaberry									
	<i>Melia azedarach</i> Δ	2009	177	65	43	253	Pattison	MS	Vince Smith
Chinkapin									
Allegheny	<i>Castanea pumila</i> var. <i>pumila</i>	2007	64	65	51	142	Perry	PA	Sally Tangeres, Scott Wade
Giant	<i>Chrysolepis chrysophylla</i>	2009	182	106	36	297	Douglas	OR	Kim Parsley
Ozark									
	<i>Castanea ozarkensis</i>	2007	35	62	38	107	Barry	MO	Robert Barnes, Jerry Moller
Cholla									
Jumping	<i>Cylindropuntia fulgida</i> *	2009	35	16	13	54	Pinal	AZ	Mike and Sylvia Hallen
Jumping	<i>Cylindropuntia fulgida</i> *	2001	32	21	15	57	Pinal	AZ	Mike Hallen
Clethra									
Cinnamon	<i>Clethra acuminata</i>	1995	10	33	12	46	Great Smoky Mountains NP	NC	W. Blozan, C. Blozan, J. Stykar
Cliffrose									
	<i>Purshia mexicana</i>	2007	37	22	17	63	Grand Canyon NP	AZ	Mike Hallen
Clusia									
Florida	<i>Clusia rosea</i> Δ	1995	31	32	25	69	Hugh Taylor Birch SP	FL	Jim Higgins
Coffeetree									
Kentucky	<i>Gymnocladus dioicus</i> *	2001	206	82	77	307	Lake	OH	Mark Ervin
Kentucky	<i>Gymnocladus dioicus</i> *	2007	203	85	82	309	Washington	MD	John Bennett
Kentucky	<i>Gymnocladus dioicus</i> *	2009	186	106	77	311	Montgomery	MD	Nicholas Weber
Condalia									
Bitter	<i>Condalia globosa</i> *	2001	42	17	25	65	Eagletail Mtns Wilderness	AZ	Central Arizona College Hiking Club
Bitter	<i>Condalia globosa</i> *	2003	44	18	16	66	Little Ajo Mountains	AZ	Jim Malusa
Coralbean									
Southeastern	<i>Erythrina herbacea</i>	2009	36	26	26	69	Brevard	FL	Dawn Witherington
Southwestern	<i>Erythrina flabelliformis</i>	1999	19	18	12	40	Arizona-Sonora Desert Museum	AZ	George Montgomery
Cottonwood									
Black	<i>Populus balsamifera</i> ssp. <i>trichocarpa</i>	2007	337	158	80	515	Cowlitz	WA	Denny Fowler
Eastern	<i>Populus deltoides</i> ssp. <i>deltoides</i>	2009	370	136	135	540	Alum Creek SP	OH	Don R. Mann
Fremont	<i>Populus fremontii</i> ssp. <i>fremontii</i>	1996	504	92	108	623	Santa Cruz	AZ	Mark Rouw, Don Richard
Meseta	<i>Populus fremontii</i> ssp. <i>mesetae</i>	1986	211	49	84	281	Big Bend NP	TX	James E. Liles
Narrowleaf	<i>Populus angustifolia</i>	2009	150	80	100	255	Sweetgrass	MT	Martin Flanagan
Plains	<i>Populus deltoides</i> ssp. <i>monilifera</i>	1967	432	95	98	552	Hygiene	CO	Allegra Collister
Rio Grande	<i>Populus deltoides</i> ssp. <i>wislizeni</i>	1976	367	92	118	489	Fort Davis	TX	Steve Runnels
Swamp	<i>Populus heterophylla</i> *	2007	128	115	33	251	Southampton	VA	Carmean, Williamson, Fleming, Patterson
Swamp	<i>Populus heterophylla</i> *	2007	142	105	34	256	Chesapeake	VA	Byron Carmean, Gary Williamson



Cucumbertree Magnolia, North Canton, Ohio — Richard Malogorski

Species/Status		Year	Circumference" / Height/ Spread/ Points				Location		Nominator
Cranberrybush									
American	<i>Viburnum opulus</i> var. <i>americanum</i> *	2008	25	15	15	44	Berrien	MI	Andrew Sawyer
American	<i>Viburnum opulus</i> var. <i>americanum</i> *	2009	28	14	20	47	Berrien	MI	Andrew Sawyer
Cypress									
Arizona	<i>Cupressus arizonica</i> ssp. <i>arizonica</i>	1955	244	93	48	349	Coronado NF	AZ	James Mielke
Arizona smooth	<i>Cupressus arizonica</i> var. <i>glabra</i>	2003	215	70	52	298	Coconino NF	AZ	David Thornburg, Harry Untiedt
Baker	<i>Cupressus bakeri</i>	1976	107	98	19	210	Rogue River NF	OR	Frank Callahan
MacNab	<i>Cupressus macnabiana</i>	1981	136	55	55	205	Amador	CA	Frank Callahan
Mendocino	<i>Cupressus goveniana</i> ssp. <i>pygmaea</i>	1986	238	150	49	400	Mendicino	CA	Frank Callahan
Monterey	<i>Cupressus macrocarpa</i>	1994	553	102	111	683	Pescadero	CA	R. Huntington, Fiesta Garden School
Piute	<i>Cupressus arizonica</i> ssp. <i>nevadensis</i>	2005	112	74	60	201	Sequoia NF	CA	Loren Ross
Santa Cruz	<i>Cupressus abramsiana</i> *	2003	97	67	45	175	Santa Cruz	CA	Whit Bronaugh
Santa Cruz	<i>Cupressus abramsiana</i> *	2003	99	68	40	177	Santa Cruz	CA	Whit Bronaugh
Santa Cruz	<i>Cupressus abramsiana</i> *	2003	113	56	41	179	Santa Cruz	CA	Whit Bronaugh
Sargent	<i>Cupressus sargentii</i>	2001	244	58	64	318	Wildcat Canyon RP	CA	Rory Nichols
Tecate	<i>Cupressus guadalupensis</i> var. <i>forbesii</i>	2001	93	71	48	176	San Diego	CA	Art Cowley
Cypress-Pine									
Blue	<i>Callitris glaucophylla</i> Δ	1975	180	60	50	253	Manatee	FL	Steven Spezia
Cyrilla									
Swamp	<i>Cyrilla racemiflora</i>	1980	60	50	12	113	Washington	FL	Charles Reeves
Dahoon									
	<i>Ilex cassine</i>	2006	79	46	36	134	Palm Beach	FL	Josh Marshall
Myrtle	<i>Ilex myrtifolia</i>	1998	77	60	39	147	Wakulla	FL	David Roddenberry
Darling-Plum									
	<i>Reynosa septentrionalis</i>	1975	23	49	15	76	Monroe	FL	Charlotte Niedhauk
Desert-Willow									
	<i>Chilopsis linearis</i>	1976	165	68	54	247	Gila	AZ	Mitchell Holder
Devils-Walkingstick									
	<i>Aralia spinosa</i>	2006	31	38	40	79	Pisgah NF	NC	Ron Lance, Ken Knox
Devilwood									
	<i>Osmanthus americanus</i>	2003	88	39	42	138	Clay	FL	John and Janet Sloane
Dogwood									
Alternate-leaf	<i>Cornus alternifolia</i>	2007	57	12	15	73	Bedford	VA	Richard Salzer
Blackfruit	<i>Cornus sessilis</i>	1986	20	18	16	42	Shasta-Trinity NF	CA	Frank Callahan
Flowering	<i>Cornus florida</i> *	2003	107	36	39	153	Williamson	TN	Jerry Greenshaw
Flowering	<i>Cornus florida</i> *	2002	107	35	42	153	Hampton	VA	Sabastian Velilla, Sandra Burke
Gray	<i>Cornus racemosa</i>	2009	32	22	18	59	Berrien	MI	Andrew Sawyer
Pacific	<i>Cornus nuttallii</i>	2009	150	61	57	225	Multnomah	OR	Brian French
Red-osier	<i>Cornus sericea</i> ssp. <i>sericea</i>	2009	58	12	15	74	Berrien	MI	Andrew Sawyer
Roughleaf	<i>Cornus drummondii</i>	2001	40	22	33	70	Shelby	TN	David Smith
Roundleaf	<i>Cornus rugosa</i>	2006	23	29	26	59	Leelanau	MI	Andrew and Noah Sawyer
Swamp	<i>Cornus foemina</i>	2009	25	27	24	58	Southampton	VA	Byron Carmean, Gary Williamson
Western	<i>Cornus sericea</i> ssp. <i>occidentalis</i>	2003	32	25	35	66	Polk	OR	Barbra Rupers
Douglas-Fir									
Bigcone	<i>Pseudotsuga macrocarpa</i>	1945	269	165	94	458	Los Angeles	CA	William Maxwell
Coast	<i>Pseudotsuga menziesii</i>	1999	505	281	71	804	Olympic NF	WA	Robert Van Pelt
Rocky Mountain	<i>Pseudotsuga menziesii</i> var. <i>glauca</i>	2006	100	84	41	194	Buncombe	NC	K. Knox, B. Alexander, R. Lance
Elder									
Blue	<i>Sambucus cerulea</i>	2005	136	30	38	176	Porterville	CA	Art Cowley
Mexican	<i>Sambucus mexicana</i>	2005	95	41	26	143	Patagonia	AZ	Ken Morrow

Species/Status/		Year	Circumference" / Height / Spread / Points				Location		Nominator
Elephant-Tree									
	<i>Bursera microphylla</i>	2005	34	16	28	57	Cabeza Prieta NWR	AZ	J. Cain, B. Jansen, P. Krausman
Elliottia									
	<i>Elliottia racemosa</i>	1989	36	47	20	88	Tattnall	GA	Howard Stanley, Red Castleman
Elm									
American	<i>Ulmus americana</i>	2009	273	118	100	416	Ross	OH	Kathryn Galloway
Cedar	<i>Ulmus crassifolia</i>	2001	156	120	68	293	Meeman-Shelby SP	TN	David Smith
Rock	<i>Ulmus thomasii</i>	2009	235	107	96	366	Salem	VA	Lee Hipp
September	<i>Ulmus serotina</i>	2007	135	83	77	237	Davidson	TN	Michael Davie, Steve Eidson
Siberian	<i>Ulmus pumila</i> Δ	2009	256	88	101	369	Ottowa	MI	Andrew and Annie Sawyer
Slippery	<i>Ulmus rubra</i> *	2003	232	103	93	358	Frederick	MD	Ian Rison, Jared Calvert
Slippery	<i>Ulmus rubra</i> *	2006	205	130	90	358	Clay	KY	Stuart Frazier
Winged	<i>Ulmus alata</i>	2009	180	89	70	287	Hopewell	VA	Byron Carmean, Gary Williamson
Esenbeckia									
Berlandier	<i>Esenbeckia berlandieri</i>	1995	41	24	21	70	Brownsville	TX	Guy Huddleston
Eucalyptus									
Bluegum	<i>Eucalyptus globulus</i> Δ	2000	586	141	126	759	Petrolia	CA	Loren Salladay, Robert Bush
Longbeak	<i>Eucalyptus camaldulensis</i> Δ	2003	276	112	84	409	Chandler	AZ	Mike Hallen, Sylvia Escudero
Eve's Necklace									
Texas	<i>Styphnolobium affine</i>	2006	74	41	44	126	Real	TX	Mike Weathers, Steven Cooke
False-Mastic									
	<i>Sideroxylon foetidissimum</i>	1973	112	75	44	198	Dade	FL	Albert H. Hetzell, Ron Smith
Fiddlewood									
Florida	<i>Citharexylum spinosum</i>	1986	20	33	13	56	Monroe	FL	Ken Roundtree, Frank L. Zickar
Fig									
Florida strangler	<i>Ficus aurea</i>	1973	399	67	77	485	Dade	FL	Albert Hetzell, Ron Smith
Shortleaf	<i>Ficus citrifolia</i>	1986	444	48	75	511	Monroe	FL	David M. Sinclair, Frank L. Zickar
Fir									
California white	<i>Abies concolor</i> var. <i>lowiana</i>	1997	276	217	39	503	Yosemite NP	CA	Robert Van Pelt
Corkbark	<i>Abies lasiocarpa</i> var. <i>arizonica</i>	1969	146	95	33	249	Lincoln NF	NM	Earl Aldon
Fraser	<i>Abies fraseri</i>	2009	115	95	42	221	Harrisonburg	VA	Murray, Carmean, Williamson
Noble	<i>Abies procera</i>	1964	359	227	41	596	Gifford Pinchot NF	WA	Harold Coates, Bob Smith
Rocky Mountain white	<i>Abies concolor</i>	2005	180	156	41	346	Santa Fe NF	NM	Charles Wicklund
Subalpine	<i>Abies lasiocarpa</i>	1965	252	130	26	389	Olympic NP	WA	Stephen Arno, Oscar Sedergeren
Fishpoison-Tree									
Florida	<i>Piscidia piscipula</i>	2008	123	50	63	189	Monroe	FL	David Shafer
Franklin-Tree									
	<i>Franklinia alatamaha</i>	1968	42	33	40	85	Wyndmoor	PA	John Swartley
Fremontia									
California	<i>Fremontodendron californicum</i>	2003	54	25	28	86	Sequoia NF	CA	Art Cowley
Fringetree									
	<i>Chionanthus virginicus</i>	2001	57	25	43	93	Salt Lake City	UT	Art Scott, Shirley Hawkins
Gallberry									
Large	<i>Ilex coriacea</i>	2004	16	33	21	54	Vernon Parish	LA	Charles Allen
Geiger-Tree									
	<i>Cordia sebestena</i> * Δ	2007	39	19	22	64	Palm Beach	FL	David Bunting
	<i>Cordia sebestena</i> * Δ	1988	37	24	17	65	Lee	FL	Eric H. Hoyer, Chris J. Anderson
Guajillo									
	<i>Acacia berlandieri</i> *	2007	17	17	21	39	University of Arizona	AZ	George Ferguson
	<i>Acacia berlandieri</i> *	2007	18	20	25	44	Uvalde	TX	John K. Berry



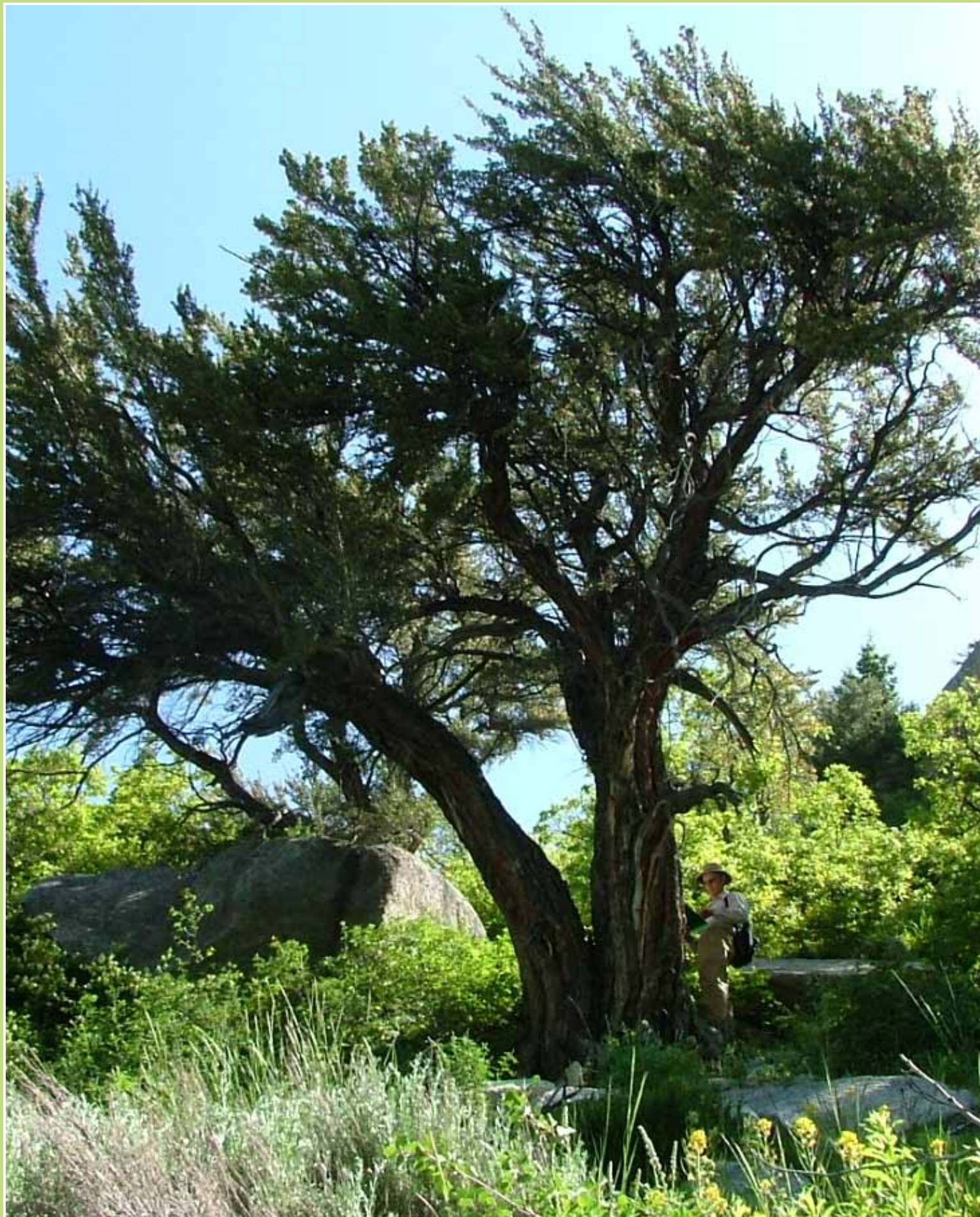
Limber Pine, Uinta NF, Utah — Meredith Perkins



Water Birch, Wallowa, Oregon — Photographs © Freesolo

Species/Status		Year	Circumference" / Height/ Spread/ Points				Location		Nominator
Gumbo-Limbo									
	<i>Bursera simaruba</i>	2007	178	43	63	237	Manatee	FL	Bob Showler
Hackberry									
Common	<i>Celtis occidentalis</i>	2003	248	126	112	402	Wayland	MI	Elwood B. Ehrle
Dwarf	<i>Celtis tenuifolia</i>	2009	60	41	40	111	Alexandria	VA	Rod Simmons, Greg Zell
Netleaf	<i>Celtis reticulata</i>	1989	180	69	75	268	Catron	NM	Ralph A. Fisher, Jr.
Spiny	<i>Celtis pallida</i>	2000	25	31	23	62	Tanque Verde	AZ	Bob and Rita Cote
Hawthorn									
Black	<i>Crataegus douglasii</i>	2009	41	35	38	86	Missoula	MT	Bill Vaughn
Blueberry	<i>Crataegus brachyacantha</i>	1993	85	30	30	123	Nacogdoches	TX	Keith Cook
Cerro	<i>Crataegus erythropoda</i>	2007	20	15	16	39	Coconino NF	AZ	Andy Allgood, David Thornburg
Cockspur	<i>Crataegus crus-galli</i>	2009	26	18	29	51	Montgomery	MD	Joe Howard
Dotted	<i>Crataegus punctata</i>	2005	77	28	38	115	Jefferson NF	VA	Richard Salzer, R. Alan Salzer
Downy	<i>Crataegus mollis</i> *	2006	119	27	44	157	Washtenaw	MI	Richard A. Brown
Downy	<i>Crataegus mollis</i> *	2009	115	35	41	160	Madison	OH	Brian Riley
Fanleaf	<i>Crataegus flabellata</i>	2001	47	36	35	92	Horrison	WV	Dan Cooley, Michael Plevich
Green	<i>Crataegus viridis</i> *	2008	65	44	41	119	Southampton	VA	Byron Carmean, Gary Williamson
Green	<i>Crataegus viridis</i> *	2008	62	49	39	121	Southampton	VA	Byron Carmean, Gary Williamson
Green	<i>Crataegus viridis</i> *	2008	54	57	42	122	Southampton	VA	Byron Carmean, Gary Williamson
Kansas	<i>Crataegus coccinioides</i>	2003	36	16	40	62	Morton Arboretum	IL	Edith Makra, Kunso Kim
May	<i>Crataegus aestivalis</i> *	2007	49	40	34	98	Haralson	GA	Maxine Grace
May	<i>Crataegus aestivalis</i> *	2001	54	34	43	99	Meeman-Shelby SP	TN	David Smith
Oneseed	<i>Crataegus monogyna</i> * Δ	1991	100	44	56	158	Old Saybrook	CT	Donald M. Swan
Oneseed	<i>Crataegus monogyna</i> * Δ	1993	113	36	56	163	Mount Vernon	WA	Ron Brightman
Parsley	<i>Crataegus marshallii</i>	1997	53	28	30	89	Covington	MS	Bryant E. Brown, Jon Wallace
Riverflat	<i>Crataegus opaca</i>	2001	58	30	35	97	Union Parrish	LA	Stephen Pagans
Scarlet	<i>Crataegus coccinea</i>	1980	62	34	32	104	Oneida	NY	Charles McFadden
Texas	<i>Crataegus texana</i>	2003	28	25	28	60	Houston	TX	Lynn Lowery
Tracy	<i>Crataegus tracyi</i>	2003	42	27	26	76	Jeff Davis	TX	Thomas R. Mangren
Washington	<i>Crataegus phaenopyrum</i>	2007	67	37	38	114	Johnson	KS	Chuck Brasher
Hemlock									
Carolina	<i>Tsuga caroliniana</i>	2005	67	98	36	174	Montgomery	VA	James C. Clark
Eastern	<i>Tsuga canadensis</i> *	2009	184	88	53	285	Arlington	VA	Mike Hunecke
Eastern	<i>Tsuga canadensis</i> *	2009	139	136	53	288	Harford	MD	Greg Zell, John Parrish
Mountain	<i>Tsuga mertensiana</i>	1995	234	152	41	396	Olympic NP	WA	R. Van Pelt, R. Wood, A. Jacobson
Western	<i>Tsuga heterophylla</i> *	1954	335	172	65	523	Olympic NP	WA	Preston Macy
Western	<i>Tsuga heterophylla</i> *	1987	273	237	67	527	Olympic NP	WA	Robert Van Pelt
Hercules-Club									
	<i>Zanthoxylum clava-herculis</i>	2007	82	36	48	130	Beaufort	SC	Bruce Lampright
Texas	<i>Zanthoxylum hirsutum</i>	2007	33	41	18	79	North Richland Hills	TX	Geoff Sherman
Hibiscus									
Shrub althea	<i>Hibiscus syriacus</i> Δ	2009	41	22	25	69	Cumberland	VA	Carmean, Carmean, Williamson
Hickory									
Bitternut	<i>Carya cordiformis</i>	2009	195	95	79	310	Harford	MD	Harford County Government
Black	<i>Carya texana</i>	1980	118	127	70	263	Sabine NF	TX	Mahler, Fant, Baggett, Fritz
Carolina	<i>Carya carolinae-septentrionalis</i>	2008	96	127	68	240	Etowah	AL	J. Lawrence Brasher
Common shagbark	<i>Carya ovata</i>	2009	184	98	107	309	Anne Arundel	MD	James and Kathleen Suite
Mockernut	<i>Carya tomentosa</i>	2009	179	102	112	309	Hamilton	FL	Allen B. Tyree, Jr.
Nutmeg	<i>Carya myristiciformis</i>	2007	74	115	34	198	Floyd	GA	Richard and Teresa Ware, Dr. Pat Tomlins
Pignut	<i>Carya glabra</i>	2007	171	148	142	355	Allen	KY	John Jackson
Red	<i>Carya ovalis</i>	2001	154	153	79	327	Great Smoky Mountains NP	TN	Bill Korn

Species/Status		Year	Circumference" / Height/ Spread/ Points				Location		Nominator
Sand	<i>Carya pallida</i>	2005	132	129	60	276	Greenville	SC	Steven D. Smith
Shellbark	<i>Carya laciniosa</i>	1994	175	139	80	334	Greenup	KY	Charles Wilburn, Rick Crooks
Water	<i>Carya aquatica</i>	2009	217	114	112	359	Emanuel	GA	Cay G. Stokes
Holly									
American	<i>Ilex opaca</i> *	2007	141	68	36	218	Alexandria	VA	Chris Garrett
American	<i>Ilex opaca</i> *	2007	145	64	42	220	Chelsea Historic Site	MD	Greg Zell
American	<i>Ilex opaca</i> *	2007	154	57	48	223	Arlington	VA	Greg Zell
Honeylocust									
	<i>Gleditsia triacanthos</i>	1999	236	114	93	373	Frederick	MD	Gary Schmidt
Hopbush									
	<i>Dodonaea viscosa</i>	2009	24	14	14	42	Pinal	AZ	Ken Morrow
Hophornbeam									
Chisos	<i>Ostrya chisosensis</i>	1983	27	30	20	62	Big Bend NP	TX	James E. Liles
Eastern	<i>Ostrya virginiana</i>	2009	131	66	53	210	Suffolk	MA	Richard Byrd III
Knowlton	<i>Ostrya knowltonii</i>	2007	132	40	47	184	Coconino NF	AZ	D. Thornburg, A. Allgood, H. Untiedt
Hornbeam									
American	<i>Carpinus caroliniana</i>	2009	127	75	55	216	Loudoun	VA	B. Carmean, J. Kirwan, G. Williamson
Huajillo									
Huajillo	<i>Havardia pallens</i>	2001	18	41	27	66	University of Arizona	AZ	Kathryn Stiles
Huisache									
	<i>Acacia farnesiana</i>	1989	160	29	43	200	Jourdanton	TX	David Soward
Huisachillo									
	<i>Acacia tortuosa</i>	2003	49	31	30	88	Phoenix	AZ	Ken and Kathy Morrow
Incense-Cedar									
	<i>Calocedrus decurrens</i>	1969	468	165	49	645	Klamath NF	CA	J. Herr, D. McHardy, D. Wright
Indian-Fig									
	<i>Opuntia ficus-indica</i> Δ	2009	42	17	17	63	Pinal	AZ	Mike Hallen, Jerry Nash
Inkwood									
	<i>Exothea paniculata</i>	2007	47	47	27	101	Everglades NP	FL	Bob Showler
Jerusalem-Thorn									
	<i>Parkinsonia aculeata</i>	2003	78	45	50	136	Phoenix	AZ	Larry B. Wright, Russell T. Gates
Joewood									
	<i>Jacquinia keyensis</i>	2009	44	14	13	61	Lee	FL	Jenny Evans
Joshua-Tree									
	<i>Yucca brevifolia</i>	1999	168	48	49	228	Stanford University	CA	Art Cowley
Jujube									
Common	<i>Ziziphus jujuba</i> Δ	2002	93	61	51	167	U. S. Capitol Grounds	DC	Rod Royse
Juniper									
Alligator	<i>Juniperus deppeana</i> *	2004	302	60	70	380	Prescott NF	AZ	Walton, Emerson, Wright, Simich, Murvosh
Alligator	<i>Juniperus deppeana</i> *	1998	311	53	77	383	Prescott NF	AZ	Mickey and Richard Contreras
Ashe	<i>Juniperus ashei</i>	1999	139	41	49	192	New Braunfels	TX	Mark Peterson
California	<i>Juniperus californica</i>	2007	157	25	42	193	Yavapai	AZ	David Thornburg, John Carr
Common	<i>Juniperus communis</i>	2009	93	58	9	153	Schenectady	NY	Fred Breglia
Drooping	<i>Juniperus flaccida</i> *	1982	103	35	34	147	Big Bend NP	TX	James E. Liles
Drooping	<i>Juniperus flaccida</i> *	2006	110	28	36	147	Big Bend NP	TX	James E. Liles
Oneseed	<i>Juniperus monosperma</i>	2007	130	28	27	165	Coconino NF	AZ	David Thornburg, Andy Allgood
Redberry	<i>Juniperus coahuilensis</i>	1977	138	28	33	174	Brewster	TX	Frank Callahan
Rocky Mountain	<i>Juniperus scopulorum</i>	1945	284	40	29	331	Salt Lake	UT	R.P. McLaughlin
Utah	<i>Juniperus osteosperma</i>	1996	260	40	56	314	Inyo NF	CA	Randy Witters, Kim 'Witters' Fritsche
Western	<i>Juniperus occidentalis</i>	1945	481	78	56	573	Stanislaus NF	CA	J.R. Hall



Curleaf Cercocarpus, Wasatch-Cashe NF, Utah - Courtesy AMERICAN FORESTS' Big Tree Program

Species/Status		Year	Circumference" / Height' Spread' Points				Location		Nominator
Kidneywood									
	<i>Eysenhardtia orthocarpa</i>	2007	28	28	20	61	Mendoza Canyon	AZ	Ken Morrow, Chuck LeFevre
Texas	<i>Eysenhardtia texana</i>	2003	17	27	14	48	Boyce Thompson Arboretum	AZ	Ken and Kathy Morrow, Mike Hallen
Larch									
European	<i>Larix decidua</i> Δ	1997	183	92	72	293	Northfield	VT	Robert Stanton
Subalpine	<i>Larix lyallii</i>	1993	265	103	75	387	Wenatchee NF	WA	Stephen Arno, Jeff Hart
Laurelcherry									
English	<i>Prunus laurocerasus</i> Δ	1985	109	33	52	155	Seattle	WA	Arthur Lee Jacobson
Leadwood									
	<i>Krugiodendron ferreum</i>	1986	73	30	28	110	Monroe	FL	David M. Sinclair, Frank L. Zickar
Leucaena									
Great	<i>Leucaena pulverulenta</i>	2009	87	38	58	140	McAllen	TX	Mark Kroeze
Littleleaf	<i>Leucaena retusa</i>	2009	18	15	18	38	Pima	AZ	David Thornburg
Lignumvitae									
Roughbark	<i>Guaiacum sanctum</i>	1997	97	31	35	137	Monroe	FL	Vincent Condon, Mike Miller
Texas	<i>Guaiacum angustifolium</i>	1974	31	27	15	62	Santa Ana NWR	TX	Terry Fears
Lime									
	<i>Citrus aurantifolia</i> Δ	2003	14	21	15	39	Phoenix	AZ	Larry B. Wright, Russell T. Gates
Loblolly-Bay									
	<i>Gordonia lasianthus</i>	2009	133	102	61	250	Etoniah Creek SF	FL	Donald Hagan
Locust									
Black	<i>Robinia pseudoacacia</i>	1974	312	94	68	423	Livingston	NY	G. Weidman
Clammy	<i>Robinia viscosa</i>	1996	23	23	13	49	Highlands	NC	Bill Wykle
New Mexico	<i>Robinia neomexicana</i>	1997	92	76	42	179	Tonto NF	AZ	Mike Hallen, George Kieren
Lyonia									
Tree	<i>Lyonia ferruginea</i>	2007	29	48	49	89	Wakulla Springs SP	FL	George Apthorp, David Roddenberry
Lyontree									
	<i>Lyonothamnus floribundus</i>	2003	34	46	16	84	Catalina Island Conservancy	CA	Art Cowley
Lysiloma									
Bahama	<i>Lysiloma latisiliquum</i>	2003	172	66	72	256	Dade	FL	R. Mulgrew, S. Formenth, R. Hammer
Littleleaf	<i>Lysiloma watsonii</i>	2005	64	32	41	106	Paradise Valley	AZ	Ken and Kathy Morrow
Madrone									
Arizona	<i>Arbutus arizonica</i>	1997	176	42	46	230	Coronado NF	AZ	Tom Harlan
Pacific	<i>Arbutus menziesii</i>	2003	316	88	116	433	Big Sur Land Trust	CA	Alan Washburn
Texas	<i>Arbutus xalapensis</i>	1999	175	26	50	214	Lincoln NF	NM	Mark Rossacker
Magnolia									
Ashe	<i>Magnolia ashei</i>	2005	62	44	44	117	Montgomery	PA	Betsy Davis, Scott Wade
Bigleaf	<i>Magnolia macrophylla</i>	2007	145	55	53	213	Howard	MD	Joe Gochar
Cucumbertree	<i>Magnolia acuminata</i>	2003	288	79	88	389	North Canton	OH	Jeremy R Felland
Fraser	<i>Magnolia fraseri</i>	2007	107	92	55	213	Rabun	GA	Jess Riddle
Pyramid	<i>Magnolia pyramidata</i>	2009	59	87	36	155	Lake Talquin SF	FL	Don Francis
Southern	<i>Magnolia grandiflora</i>	2009	277	66	61	358	Sussex	VA	Chris Bradshaw
Sweetbay	<i>Magnolia virginiana</i>	2002	174	65	70	257	Camden	GA	C. Ruckdeschel, C.R. Shoop, M.N. Hopkins
Umbrella	<i>Magnolia tripetala</i>	1969	139	59	50	211	Bucks	PA	John Swartley
Yellow cucumbertee	<i>Magnolia acuminata</i> var. <i>subcordata</i>	1970	155	84	65	255	Chester	PA	John Swartley, Scott Wade
Mahogany									
West Indian	<i>Swietenia mahagoni</i>	1992	164	70	91	257	Monroe	FL	William S. Hubard, B. Wang
Manchineel									
	<i>Hippomane mancinella</i>	1976	57	25	13	85	Monroe	FL	Clifford Shaw, George Avery

Species/Status		Year	Circumference" / Height/ Spread/ Points				Location		Nominator
Mango									
	<i>Mangifera indica</i> Δ	2009	107	39	46	158	Miami-Dade	FL	Jeffrey Block
Manzanita									
Big	<i>Arctostaphylos manzanita</i>	2005	119	30	27	156	Chico	CA	Jim Brobeck
Bigberry	<i>Arctostaphylos glauca</i>	2005	79	32	27	118	Alameda	CA	Paul Furman
Pringle	<i>Arctostaphylos pringlei</i>	2007	48	20	18	73	Coconino NF	AZ	A. Allgood, D. Thornburg, H. Untiedt
Whiteleaf	<i>Arctostaphylos viscida</i>	2001	91	24	24	121	Pierpoint Springs	CA	Art Cowley
Maple									
Bigleaf	<i>Acer macrophyllum</i>	1995	528	103	112	659	Clatsop	OR	Maynard Drawson
Black	<i>Acer nigrum</i>	2008	236	154	162	431	Kent	MI	Eric J. Piccard
Canyon	<i>Acer grandidentatum</i>	2007	190	72	50	275	Coconino NF	AZ	David Thornburg
Chalk	<i>Acer leucoderme</i>	2007	40	64	30	112	Greene	GA	Justin Tyson
Florida	<i>Acer barbatum</i> *	2007	131	105	63	252	James City	VA	Richard and Teresa Ware, Dr. Pat Tomlins
Florida	<i>Acer barbatum</i> *	2007	98	135	84	254	McCormick	SC	Steven Jones
Florida	<i>Acer barbatum</i> *	2003	146	91	75	256	Floyd	GA	B. Carmean, D. Ware, G. Fleming
Mountain	<i>Acer spicatum</i>	2001	34	62	20	101	White	GA	Jimmy Mock
Norway	<i>Acer platanoides</i> Δ	2009	202	68	88	292	Harford	MD	John Bennett
Red	<i>Acer rubrum</i>	2007	204	113	372	410	Cass	IN	Mason Ruble
Rocky Mountain	<i>Acer glabrum</i>	1997	109	71	57	194	Island	WA	Robert Van Pelt, Ron Brightman
Silver	<i>Acer saccharinum</i>	2003	347	115	61	477	Newberry	MI	Charles Wade, David Mitchell
Sugar	<i>Acer saccharum</i>	2007	233	112	91	368	Charlemont	MA	MA Dept. of Conservation & Recreation
Vine	<i>Acer circinatum</i>	1989	38	64	37	111	Olympic NP	WA	Robert Van Pelt
Mayten									
Florida	<i>Maytenus phyllanthoides</i>	2003	22	19	26	48	Boyce Thompson Arboretum	AZ	Ken and Kathy Morrow, Mike Hallen
Mescalbean									
Mescalbean	<i>Sophora secundiflora</i> *	2005	60	19	27	86	San Antonio	TX	Ben McPherson
Mescalbean	<i>Sophora secundiflora</i> *	2006	50	35	18	90	Uvalde	TX	Sky Lewey
Mesquite									
Honey	<i>Prosopis glandulosa</i>	1984	183	56	87	261	Real	TX	Ronnie W. Pendley
Screwbean	<i>Prosopis pubescens</i>	2007	43	24	31	75	Hassayampa River Preserve	AZ	David Thornburg, John Carr
Velvet	<i>Prosopis velutina</i>	1949	196	46	60	257	Santa Cruz	AZ	Gilbert Sykes
Western honey	<i>Prosopis glandulosa</i> var. <i>torreyana</i>	2001	106	34	82	161	City of Tulare	CA	Art Cowley
Mexican-Buckeye									
	<i>Ungandia speciosa</i>	2003	12	22	17	38	Fort Worth Botanical Gardens	TX	Steven Houser
Milkbark									
	<i>Drypetes diversifolia</i>	2009	41	37	16	82	Monroe	FL	Jeanne Parks
Mountain-Ash									
American	<i>Sorbus americana</i>	2007	107	25	38	142	Jefferson NF	VA	Jeff and Peter Kirwan
European	<i>Sorbus aucuparia</i> Δ	2003	121	46	47	179	Seattle	WA	Robert Van Pelt, Arthur Lee Jacobson
Greene	<i>Sorbus scopulina</i>	1993	24	14	20	43	Spokane	WA	Arthur Lee Jacobson, Ronald Brightman
Mountain-Laurel									
	<i>Kalmia latifolia</i>	1999	47	20	19	72	Fannin	GA	George C. Hoffman
Mulberry									
Black	<i>Morus nigra</i> Δ	1999	277	60	80	357	Carroll	MD	Beth Sanders
Red	<i>Morus rubra</i>	2009	247	49	63	312	Berrien	MI	Andrew and Noah Sawyer
Texas	<i>Morus microphylla</i>	2007	135	32	33	175	Gila NF	NM	Harvey Smith
White	<i>Morus alba</i> Δ	2007	248	57	63	321	Hidago	NM	David and Bonnie Dunagan
Mullein Nightshade									
Potato-tree	<i>Solanum elaeagnifolium</i>	2003	21	24	26	52	Weslaco	TX	William MacWhorter



One-seed Hawthorn, Old Saybrook, Connecticut — Duffy Schade

Species/Status	Year	Circumference"	Height'	Spread'	Points	Location	Nominator
Myrtle-Of-The-River							
<i>Calypttranthes zuzygium</i>	1999	10	28	7	40	Monroe	FL Joseph Nemec
Nannyberry							
<i>Viburnum lentago</i>	2009	45	18	14	67	Montgomery	VA Salzer, Clark, Jordan
Oak							
Ajo	2009	91	57	57	162	Val Verde	TX Mark Duff
Arizona white	2003	210	42	65	268	Santa Cruz	AZ David and Paul Thornburg
Arkansas	1997	150	100	104	276	Covington	MS Bryant E. Brown, Jon Wallace
Bear	1985	49	41	34	99	Shenandoah NP	VA Dawn Morgan
Bear	2009	62	32	37	103	Hartford	CT Richard Salzer
Bigelow	2007	121	45	72	184	Austin	TX Eric Beckers, Jim Houser
Black	1989	331	80	100	436	East Granby	CT Edward A. Richardson
Blackjack	2007	124	122	49	258	Barbour	AL David Pittman
Blue	2009	146	71	79	237	Mariposa	CA Carl Casey, Robert Van Pelt
Bluejack	2007	83	60	68	160	Vernon	LA Dr. Charles M. Allen
Bluejack	2009	85	62	51	160	Mineola	TX Ken Conaway
Bluff	2009	121	129	64	266	Wakulla Springs SP	FL George Aphthorp
Bur	2007	287	90	130	410	Boone	MO Kent Slusher
Bur	2007	287	104	93	414	Woodford	KY Andrew Sawyer
Bur	2009	313	73	117	415	Berrien	MI John Sam Williamson, Jr.
California black	2008	281	91	78	392	Tuolumne	CA Carl Casey, Bob Huntington
Canyon live	2001	345	69	121	444	Tulare	CA Mike Cobb, Art Cowley
Chapman	1963	85	45	41	140	Ocala NF	FL Robert Simons
Cherrybark	2003	332	123	122	486	Tipton	TN David Smith
Chestnut	2009	222	146	94	392	Fairfax	VA Tom Mayer, Jeanine Ove
Chestnut	2003	272	99	98	396	Arnold	MD Robert Vickers, JB Wharton
Chinkapin	2006	311	76	69	404	Harrison	KY John Cox
Chisos	2005	56	34	43	101	Big Bend NP	TX Oscar Mestas
Darlington	2002	231	98	108	356	Alachua	FL Gordon Ward, Daniel Ward
Delta post	2009	16	92	95	132	Morehouse Parish	LA NRCS Bastrop Field Office
Durand	2007	162	92	70	272	Wilcox	AL Jason Ledbetter
Dwarf chinkapin	2001	41	25	22	72	Salem	NE Doug Grimm
Dwarf chinkapin	2007	42	28	24	76	Brown	KS G. Sternberg, J. Evertson, J. Locklear
Eastern white	2003	312	86	116	427	Brunswick	VA Frank E. McKeever
Emory	2001	222	81	72	321	Catron	NM M. Melendrez, G. Sternberg, T. Buchanan
Engelmann	2003	214	27	43	252	Julian	CA Clinton S. Powell
Engelmann	1951	144	84	106	255	Pasadena	CA Woodbridge Metcalf
English	1993	209	108	103	343	Olympia	WA Robert Van Pelt
Gambel	2003	219	106	64	341	Coconino NF	AZ S. Poppenberger, H. Untiedt, D. Thornbur
Georgia	1996	77	59	65	152	Clarke	GA Lucia Duncan-Harrison
Graves	2007	62	39	43	112	Big Bend NP	TX Don Sharlow
Gray	2001	237	55	37	301	Coronado NF	NM G. Sternberg, T. Buchanan, M. Melendrez
Havard	1986	58	33	30	99	Yoakum	TX Helen Thompson
Interior live	1982	252	51	73	321	Stockton	CA Darold Mac Dannald
Lacey	1989	114	53	74	186	Comal	TX David Vaughn
Laurel	2006	265	130	81	415	Conagree NP	SC J. & D. Riddle, W. Blozan, M. Houtchings
Live	1976	467	68	139	570	St. Tammany Parish	LA John deMarche, LA Forestry Assn.
Mexican blue	1999	120	65	69	202	Hidalgo	NM Samuel Lamb
Mohr	2001	37	21	22	64	Hudspeth	TX T. Buchanan, M. Melendrez
Myrtle	2007	26	35	30	69	Baldwin	AL Harry S. Larsen, Fred Nation

Species/Status		Year	Circumference" / Height/ Spread/ Points				Location		Nominator
Myrtle	<i>Quercus myrtifolia</i> *	2005	29	37	16	70	Camden	GA	Jimmy Mock
Netleaf	<i>Quercus rugosa</i>	1998	90	47	36	146	Coronado NF	AZ	Robert Zahner, James W Smith
Northern pin	<i>Quercus ellipsoidalis</i>	2006	167	92	80	279	Portage	WI	UWSP SSA
Northern red	<i>Quercus rubra</i>	2001	405	80	102	511	Monroe	NY	Dan Dinero
Oglethorpe	<i>Quercus oglethorpensis</i>	1968	123	64	82	208	Oglethorpe	GA	Samuel Jones
Oregon white	<i>Quercus garryana</i>	1970	276	93	65	385	Douglas	OR	Allen Silveus
Overcup	<i>Quercus lyrata</i>	2007	313	109	102	448	Southampton	VA	B. Carmean, G. Williamson, M. Rasnake
Palmer	<i>Quercus palmeri</i>	1995	95	39	36	143	Yavapai	AZ	Lora Morrow
Pin	<i>Quercus palustris</i>	2001	241	135	97	400	Bell	KY	M. Harp, L. Johnson, D. Carmical
Post	<i>Quercus stellata</i> *	1996	245	83	102	354	Jackson	GA	Jimmy Mock
Post	<i>Quercus stellata</i> *	2006	227	105	95	356	DeSoto	MS	Drew Stafford, George Byrd III
Sand live	<i>Quercus geminata</i>	1985	193	64	103	283	Alachua	FL	Robert W. Simons
Sand post	<i>Quercus stellata</i> var. <i>margarettae</i>	2008	192	70	85	283	Bienville	LA	Stephen L. Pagans
Sandpaper	<i>Quercus pungens</i>	2003	13	18	29	38	Coronado NF	AZ	Ken Morrow
Scarlet	<i>Quercus coccinea</i> *	2007	204	132	90	359	McCormick	SC	Jimmy Mock
Scarlet	<i>Quercus coccinea</i> *	2007	252	119	120	401	Oglethorpe	GA	Steven Jones
Shingle	<i>Quercus imbricaria</i>	1989	219	105	62	340	Cincinnati	OH	A. P. Newman, R. Bernhard
Shumard	<i>Quercus shumardii</i>	2002	332	96	96	452	Anna	IL	Larry Mahan
Silverleaf	<i>Quercus hypoleucoides</i>	2001	158	85	52	256	Coronado NF	AZ	Ken Porter, Mike Hallen
Sonoran scrub	<i>Quercus turbinella</i>	1993	81	51	48	144	Spring Mountain Ranch SP	NV	John Jones
Southern red	<i>Quercus falcata</i>	1996	332	123	152	493	Upton	GA	C. Bowie, J. A. Osbolt, G. Hill
Swamp chestnut	<i>Quercus michauxii</i>	2009	294	106	103	426	Kent	MD	John Bennett
Swamp white	<i>Quercus bicolor</i>	2007	270	93	102	389	Franklin Township	NJ	Dave Johnson
Texas	<i>Quercus buckleyi</i>	2003	198	70	82	289	Fort Worth	TX	Matthew and Michael Blevins
Texas live	<i>Quercus fusiformis</i>	2002	361	48	90	432	Young	TX	Jay Burkett
Texas red	<i>Quercus texana</i>	1986	288	113	81	421	Vernon	LA	William E. Burns
Toumey	<i>Quercus toumeyi</i>	2005	64	24	31	96	Santa Cruz	AZ	Ken and Kathy Morrow
Turkey	<i>Quercus laevis</i>	2009	134	64	65	214	Pasco	FL	David Brown
Valley	<i>Quercus lobata</i>	2001	276	112	83	409	Tulare	CA	Art Cowley, Dan Busby
Vasey	<i>Quercus vaseyana</i>	2007	60	33	34	102	Big Bend NP	TX	Pete Smith
Water	<i>Quercus nigra</i>	2001	286	118	108	431	Jones	MS	Herman Smith
Willow	<i>Quercus phellos</i>	2007	301	131	130	465	Chesapeake	VA	Byron Carmean, Gary Williamson
Oleander									
	<i>Nerium oleander</i> * Δ	2003	55	28	25	89	Sun City	AZ	Larry B. Wright, Russell T. Gates
	<i>Nerium oleander</i> * Δ	1997	51	32	36	92	Exeter	CA	Art Cowley
Orange									
Orange	<i>Citrus sinensis</i> Δ	2001	61	34	31	103	Kern	CA	Art Cowley
Sour	<i>Citrus aurantium</i> Δ	2004	44	28	24	78	Tucson	AZ	Judy Nantell, Chris Maloney
Osage-Orange									
	<i>Maclura pomifera</i>	1969	326	60	64	402	Charlotte	VA	Red Hill Shrine
Oysterwood									
	<i>Gymnanthes lucida</i>	2007	17	30	13	50	Monroe	FL	Ben Paswater, Park Ranger
Palmetto									
Cabbage	<i>Sabal palmetto</i>	1999	69	60	14	133	Lafayette	FL	Jerry N. Livingston
Dwarf	<i>Sabal minor</i> *	2003	42	24	12	69	San Bernard NWR	TX	Edward C Fritz
Dwarf	<i>Sabal minor</i> *	2003	43	28	13	74	San Bernard NWR	TX	Mickey Merrit
Mexican	<i>Sabal mexicana</i> *	1995	59	48	18	112	Cameron	TX	Sue Griffin
Mexican	<i>Sabal mexicana</i> *	1989	61	50	11	114	Hidalgo	TX	Joe Ideker
Paloverde									
Blue	<i>Parkinsonia florida</i>	2007	100	40	48	152	Maricopa	AZ	John Carr, David Thornburg
Yellow	<i>Parkinsonia microphylla</i>	2003	43	29	43	83	Mobile	AZ	Mike Hallen



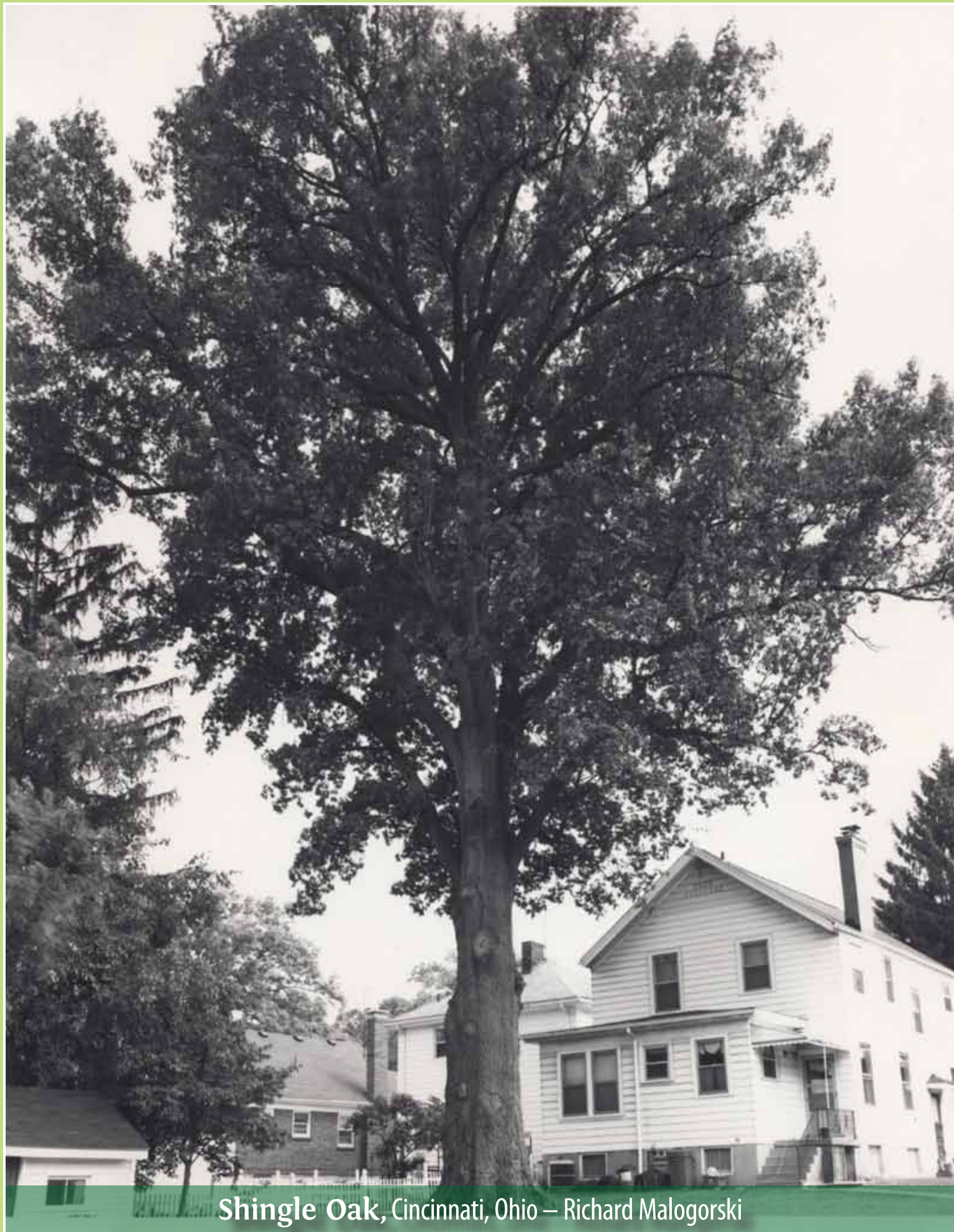
Pawpaw, Montgomery, Maryland — Donna and Jim Will



Swamp Chestnut Oak, Kent, Maryland — Dori Murphy

Species/Status		Year	Circumference" / Height/ Spread/ Points				Location		Nominator
Papaya									
	<i>Carica papaya</i> Δ	2008	36	20	10	59	University of Houston	TX	David Petersen
Paper-Mulberry									
	<i>Broussonetia papyrifera</i> * Δ	2005	217	27	41	254	Halifax	NC	Sid Shearin
	<i>Broussonetia papyrifera</i> * Δ	2007	205	41	43	257	Hopewell	VA	Byron Carmean, Gary Williamson
Paradise-Tree									
	<i>Simarouba glauca</i> *	2009	58	65	20	128	Miami-Dade	FL	Juan Fernandez
	<i>Simarouba glauca</i> *	2009	67	55	44	133	Miami-Dade	FL	Juan Fernandez
Parasoltree									
Chinese	<i>Firmiana simplex</i> Δ	1999	141	47	36	197	San Diego	CA	Art Cowley
Paulownia									
Royal	<i>Paulownia tomentosa</i> Δ	1989	291	54	60	360	Vanderburgh	IN	Scott C. Wagner, Mary Ellen Jones
Paurotis-Palm									
	<i>Acoelorrhaphe wrightii</i>	1995	10	35	5	46	Dade	FL	Don Evans, Daniel B. Ward
Pawpaw									
Common	<i>Asimina triloba</i> *	2009	31	48	22	85	Prince George's	MD	Chris Garrett, Brooke Espy
Common	<i>Asimina triloba</i> *	2009	39	37	34	85	Van Buren	MI	John Parrish, Joe Howard
Common	<i>Asimina triloba</i> *	2009	26	57	19	88	Montgomery	MD	Elwood B.Ehrle, Stan Pefley
Peach									
	<i>Prunus persica</i> Δ	2009	44	18	30	70	New Haven	CT	Frank Kaputa
Pear									
Common	<i>Pyrus communis</i> Δ	1991	179	59	61	253	Waitsburg	WA	R. Van Pelt, S. Muse, M. Drawson
Pecan									
	<i>Carya illinoensis</i>	2001	267	141	111	436	Cocke	TN	W.K. Remine
Persimmon									
Common	<i>Diospyros virginiana</i>	2006	151	94	78	265	Yell	AR	Lynn Warren
Texas	<i>Diospyros texana</i>	1965	71	25	36	105	Uvalde	TX	William Graves
Pigeon-Plum									
	<i>Coccoloba diversifolia</i>	2008	67	34	29	108	Monroe	FL	Stephen Hodges
Pinckneya									
	<i>Pinckneya pubens</i>	2005	10	18	8	30	Brantley	GA	Jimmy Mock, Richard Gill
Pine									
Apache	<i>Pinus engelmannii</i> *	1999	121	112	38	243	Coronado NF	AZ	Ken Morrow, Mike Hallen
Apache	<i>Pinus engelmannii</i> *	1998	127	108	44	246	Coronado NF	AZ	R.& G. Zahner, K. Morrow
Arizona	<i>Pinus arizonica</i>	1998	152	109	57	275	Coronado NF	AZ	R. & G. Zahner, Ken Porter
Austrian	<i>Pinus nigra</i> Δ	1995	128	95	55	237	Lincoln Park	WA	Robert Van Pelt
Bishop	<i>Pinus muricata</i>	2005	198	72	86	292	City of Oakland	CA	Art Cowley
Border pinyon	<i>Pinus discolor</i>	2005	61	46	28	114	Chiricahua NM	AZ	John Titus
Chihuahua	<i>Pinus leiophylla</i> var. <i>chihuahuana</i>	2009	124	76	32	208	Cochise	AZ	David and Paul Thornburg
Colorado bristlecone	<i>Pinus aristata</i>	2007	177	63	41	250	Huerfano	CO	Ed Biery
Coulter	<i>Pinus coulteri</i>	2001	152	141	72	311	Julian	CA	Art Cowley, Clint Powell
Digger	<i>Pinus sabiniana</i>	2005	200	126	86	348	Kern	CA	Loren Ross
Eastern white	<i>Pinus strobus</i>	2008	279	119	65	414	Cheshire	NH	Frank Barker, Sally Chadwick
Fallax pinyon	<i>Pinus monophylla</i> var. <i>fallax</i>	2007	100	79	40	189	Prescott NF	AZ	A. Allgood, D. Thornburg, H. Untiedt
Foxtail	<i>Pinus balfouriana</i>	2007	261	78	31	347	Shasta Trinity NF	CA	Al Groncki, Siskiyow Wanderers
Great Basin bristlecone	<i>Pinus longaeva</i>	2003	455	52	44	518	Humboldt-Toiyabe NF	NV	Robert Van Pelt
Jack	<i>Pinus banksiana</i>	2008	121	55	50	189	Kittson	MN	Steve Morgan, Rick Olson
Jeffrey	<i>Pinus jeffreyi</i>	2005	306	192	90	521	Stanislaus NF	CA	Robert Van Pelt
Limber	<i>Pinus flexilis</i>	1968	275	62	47	349	Uinta NF	UT	T.A. Walker, W. Crawford, T. Dietz
Loblolly	<i>Pinus taeda</i>	2001	176	167	71	361	Congaree Swamp NP	SC	D. Riddle, J. Riddle, W. Blozan

Species/Status		Year	Circumference" / Height/ Spread/ Points				Location		Nominator
Longleaf	<i>Pinus palustris</i>	2005	145	106	36	260	Montgomery	NC	Johnny Mabe
Mexican pinyon	<i>Pinus cembroides</i> *	2005	74	49	37	132	Big Bend NP	TX	Robert Edmonson
Mexican pinyon	<i>Pinus cembroides</i> *	1982	67	57	40	134	Big Bend NP	TX	James E. Liles
Monterey	<i>Pinus radiata</i>	2003	334	167	106	528	Carmel	CA	Alan Washburn
Pacific ponderosa	<i>Pinus ponderosa</i> var. <i>ponderosa</i>	2007	290	240	70	548	Shasta Trinity NF	CA	Tim Lovitt
Pinyon (two-leaf)	<i>Pinus edulis</i>	2009	88	40	38	138	Coconino NF	AZ	Andy Allgood, David Thornburg
Pitch	<i>Pinus rigida</i> *	1999	146	114	70	278	White	GA	K. Jackson, P. Todd, J. Mock
Pitch	<i>Pinus rigida</i> *	1999	170	99	42	280	Bradford	NH	William Weiler
Pond	<i>Pinus serotina</i>	2009	138	120	65	274	Putnam	FL	Harold Wilson
Red	<i>Pinus resinosa</i>	1968	141	122	54	277	Gogebic	MI	Andrew and Noah Sawyer
Rocky Mountain lodgepole	<i>Pinus contorta</i> var. <i>latifolia</i>	1980	133	156	37	298	Valley	ID	S. Keaffer, T. McManus
Rocky Mountain ponderosa	<i>Pinus ponderosa</i> var. <i>scopulorum</i>	1997	246	194	64	456	Lolo NF	MT	Donald M. Wood, Don Campbell
Sand	<i>Pinus clausa</i>	2007	74	72	29	153	Aiken	SC	Ronald E. Bonar
Scotch	<i>Pinus sylvestris</i> Δ	2005	174	53	73	245	Beatrice	NE	Christine Meyer
Shore	<i>Pinus contorta</i>	1993	138	101	37	248	Bryant	WA	Ron Brightman
Shortleaf	<i>Pinus echinata</i> *	2007	151	91	68	259	Smith	TX	Don C. Bragg
Shortleaf	<i>Pinus echinata</i> *	2006	113	136	50	262	Ashley	AR	Larry Jones
Sierra lodgepole	<i>Pinus contorta</i> var. <i>murrayana</i>	1963	245	116	50	374	San Bernardino NF	CA	Miles Gulick
Singleleaf pinyon	<i>Pinus monophylla</i>	2005	167	50	52	230	Washoe	NV	Dian Mercier, Harley Moe
Slash	<i>Pinus elliotii</i> var. <i>elliottii</i>	1985	138	144	54	296	Duval	FL	James R. Karels
South Florida slash	<i>Pinus elliotii</i> var. <i>densa</i>	2009	149	69	61	233	Lee	FL	Michael Weston
Southwestern white	<i>Pinus strobiformis</i>	1974	185	111	62	312	Lincoln NF	NM	Thomas Dix
Spruce	<i>Pinus glabra</i>	2003	146	156	70	320	Bienville NF	MS	Grace and Art Bradshaw
Sugar	<i>Pinus lambertiana</i>	1994	435	209	59	659	Dorington	CA	Herbert E. McLean, Gary Whitson
Table mountain	<i>Pinus pungens</i>	1988	104	120	41	234	Stokes	NC	M. Pell, S. Williams, K. & S. Knox
Virginia	<i>Pinus virginiana</i> *	2008	88.9	89	40	188	Sussex	DE	Dode Gladders
Virginia	<i>Pinus virginiana</i> *	2007	88	91	43	190	Arlington	VA	Greg Zell
Washoe	<i>Pinus washoensis</i>	2006	207	150	75	376	Modoc NF	CA	Edith Asrow
Western white	<i>Pinus monticola</i>	2009	324	117	55	455	Alpine	CA	Mike Mahoney
Whitebark	<i>Pinus albicaulis</i>	2007	268	65	27	340	Sawtooth NF	ID	Tyler Williams
Pinyon									
Papershell	<i>Pinus remota</i>	2009	48	33	34	90	Marathon	TX	Aaron Wykhuis, Charles Stair
Pisonia									
	<i>Pisonia rotundata</i>	1994	40	27	12	70	Monroe	FL	Robert W. Ehrig
Plum									
Allegheny	<i>Prunus alleghaniensis</i> *	1991	37	37	24	80	Jefferson NF	VA	Richard Salzer
Allegheny	<i>Prunus alleghaniensis</i> *	1991	52	24	32	84	Roanoke	VA	Richard Salzer
American	<i>Prunus americana</i>	2009	52	31	25	89	Washtenaw	MI	Richard Pomorski
Flatwoods	<i>Prunus umbellata</i>	2007	35	43	37	87	Chattahoochee NF	GA	Sheldon Henderson
Garden	<i>Prunus domestica</i> Δ	2007	71	19	21	95	Sky Meadows SP	VA	Richard Salzer
Hortulan	<i>Prunus hortulana</i>	2007	37	27	31	72	Warren	OH	Brian P. Riley
Mexican	<i>Prunus mexicana</i> *	2004	71	18	19	94	Hood	TX	Frank L. Saffarrans, Jr.
Mexican	<i>Prunus mexicana</i> *	2006	65	21	31	94	Houston	TX	Mickey Merritt
Mexican	<i>Prunus mexicana</i> *	2009	63	26	36	98	Bogata	TX	Gary Cheatwood
Wildgoose	<i>Prunus munsoniana</i>	2003	25	36	35	70	Dallas	TX	Steve Houser
Poinciana									
Royal	<i>Delonix regia</i> Δ	1972	182	62	61	259	Hendry	FL	Michael W. Kenton
Poison-Sumac									
	<i>Toxicodendron vernix</i> *	2000	18	30	19	53	Arnold	MD	Colby B. Rucker
	<i>Toxicodendron vernix</i> *	2009	35	18	17	57	Berrien	MI	Andrew Sawyer



Shingle Oak, Cincinnati, Ohio — Richard Malogorski

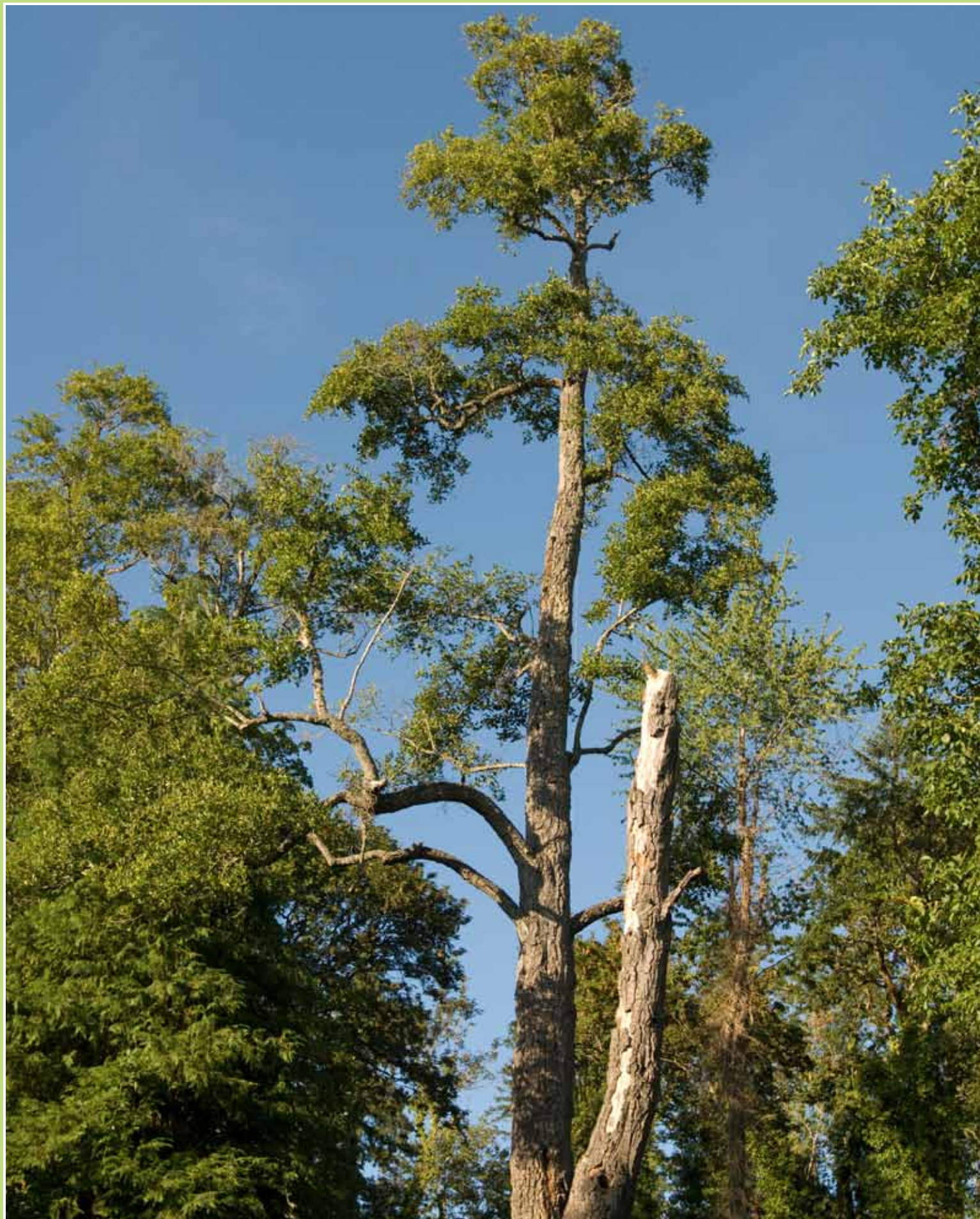


Tanoak, Curry, Oregon - Photographs © Freesolo

Species/Status		Year	Circumference" / Height/ Spread/ Points				Location		Nominator
Poisontree									
Florida	<i>Metopium toxiferum</i>	1986	78	47	24	131	Monroe	FL	Ken Roundtree, David M. Sinclair
Pond-Apple									
	<i>Annona glabra</i>	2009	130	42	38	182	Palm Beach	FL	Norman Masencup
Pondcypress									
	<i>Taxodium ascendens</i>	2007	126	100	10	229	Pierce	GA	Jimmy Mock
Poplar									
Balsam	<i>Populus balsamifera</i>	2008	189	134	73	341	Cheshire	NH	Adam Welch
White	<i>Populus alba</i> Δ	2005	256	68	70	342	Charlevoix	MI	Elwood B. Ehrle
Port-Orford-Cedar									
	<i>Chamaecyparis lawsoniana</i>	1968	522	242	35	773	Siskiyou NF	OR	Donald Denniston
Possumhaw									
	<i>Ilex decidua</i>	1981	37	44	49	93	Congaree NP	SC	Robert H. Jones, Lee Renaud
Prickly-Ash									
Lime	<i>Zanthoxylum fagara</i>	1988	65	16	33	89	Lee	FL	Eric H. Hoyer, Norma Jean Byrd
Princewood									
Caribbean	<i>Exostema caribaeum</i>	1998	26	36	10	65	Monroe	FL	Joseph Nemec
Privet									
California	<i>Ligustrum ovalifolium</i> Δ	1999	96	30	38	136	Roanoke	VA	Richard Salzer
Chinese	<i>Ligustrum sinense</i> * Δ	2007	59	32	36	100	Virginia Beach	VA	Byron Carmean, Gary Williamson
Chinese	<i>Ligustrum sinense</i> * Δ	2007	62	29	39	101	Gloucester	VA	Byron Carmean, Gary Williamson
Japanese	<i>Ligustrum japonicum</i> Δ	2005	51	41	39	102	Lynchburg	SC	Chisolm Beckham
Redbud									
California	<i>Cercis occidentalis</i>	1980	71	45	38	126	Sonoma	CA	E. Lagel
Eastern	<i>Cercis canadensis</i>	2007	132	39	40	181	Jackson	MO	Country Club Tree Service
Texas	<i>Cercis canadensis</i> var. <i>texensis</i>	2003	52	28	40	90	Kendall	TX	Steve Lowe
Redcedar									
Eastern	<i>Juniperus virginiana</i>	1989	234	57	75	310	Coffee	GA	Richard Johnston
Southern	<i>Juniperus virginiana</i> var. <i>silicicola</i>	1995	212	77	55	303	Alachua	FL	Robert W. Simons, Bill Russell
Western	<i>Thuja plicata</i>	1945	761	159	45	931	Olympic NP	WA	F.W. Mathias
Redshank									
	<i>Adenostoma sparsifolium</i>	1977	48	23	26	78	Warner Springs	CA	Frank Callahan
Redwood									
Coast	<i>Sequoia sempervirens</i>	1993	867	311	101	1203	Prairie Creek Redwoods SP	CA	R. Hildebrant, M. Taylor, S. Sillett
Coast	<i>Sequoia sempervirens</i>	1998	895	307	83	1223	Jedediah Smith Redwoods SP	CA	R. Hildebrant, M. Taylor, S. Sillett
Coast	<i>Sequoia sempervirens</i>	1998	950	321	75	1290	Jedediah Smith Redwoods SP	CA	Ron Hildebrant, Michael Taylor, Steven S
Rhododendron									
Catawba	<i>Rhododendron catawbiense</i>	2005	15	25	15	44	Great Smoky Moutains NP	NC	Jess Riddle
Pacific	<i>Rhododendron macrophyllum</i>	2006	37	24	21	66	Lane	OR	R. Sjogren, J. Grant, J. Hall
Rosebay	<i>Rhododendron maximum</i> *	2005	28	28	36	65	Rabun	GA	Jimmy and Sandra Mock
Rosebay	<i>Rhododendron maximum</i> *	2005	31	28	28	66	Buncombe	NC	K. Knox, B. Alexander, R. Lance
Rosebay	<i>Rhododendron maximum</i> *	1981	28	34	28	69	Sumter NF	SC	Steve Muzal
Royalpalm									
Florida	<i>Roystonea regia</i>	1995	55	93	13	151	Collier	FL	Daniel B. Ward
Russian-Olive									
	<i>Elaeagnus angustifolia</i>	1991	160	47	61	222	Spin City	SD	Royce King
Sagebrush									
Big	<i>Artemisia tridentata</i>	1995	30	15	15	49	Jefferson	OR	Mark R. Corbet

Species/Status		Year	Circumference" / Height/ Spread/ Points				Location		Nominator
Saguaro	<i>Carnegiea gigantea</i> *	2009	83	54	15	141	Pinal	AZ	M. Hallen, T. Dutton, J. Nash
	<i>Carnegiea gigantea</i> *	2003	94	46	10	143	Tonto NF	AZ	J. Pleggenkuhle, C. Seymour, C. Hock
	<i>Carnegiea gigantea</i> *	2003	108	32	16	144	Mammoth	AZ	Charley Blank
Sassafras	<i>Sassafras albidum</i>	1954	270.5	77	67	364	Daviess	KY	Dr. O.W. Rash
Satinleaf	<i>Chrysophyllum oliviforme</i>	1976	72	45	45	128	Dade	FL	Clifford Shaw, Albert Hetzell
Satinwood	<i>Zanthoxylum flavum</i>	2007	95	30	35	134	Monroe	FL	Key West Botanical Garden Society
Saw-Palmetto	<i>Serenoa repens</i> *	1982	19	17	4	37	Sumter	FL	Buford C. Pruitt, D. Fogler
	<i>Serenoa repens</i> *	2005	18	22	7	42	Glades	FL	Dale Armstrong
Scarletbush	<i>Hamelia patens</i>	2005	18	14	15	36	Brevard	FL	Blair and Dawn Witherington
Seagrape	<i>Coccoloba uvifera</i>	1971	288	80	80	388	Dade	FL	D. McCarthy, R. Hammer, D. Ward
	<i>Sequoiadendron giganteum</i>	1940	1020	274	107	1321	Sequoia NP	CA	Isabelle F. Story
Serviceberry	<i>Amelanchier laevis</i>	2009	125	40	53	178	Washtenaw	MI	Andrew Sawyer
Allegheny	<i>Amelanchier arborea</i>	2009	134	34	52	181	Hartford	CT	Ed Richardson
Downy	<i>Amelanchier sanguinea</i>	1978	59	53	43	123	Clarendon	VT	Dave Potter
Roundleaf	<i>Amelanchier utahensis</i>	2005	14	21	25	41	Coconino NF	AZ	David and Judy Thornburg
Utah	<i>Amelanchier alnifolia</i>	1993	41	41	41	92	Beacon Rock SP	WA	Robert Van Pelt
Western									
Silktassel	<i>Garrya wrightii</i>	2007	38	17	19	60	Coconino NF	AZ	D. Thornburg, H. Untiedt, A. Allgood
Wright									
Silktree	<i>Albizia julibrissin</i> Δ	2009	165	59	103	250	Virginia Beach	VA	Carmean, Knuckols, Carroll, Williamson
Mimosa									
Silverbell	<i>Halesia carolina</i>	2001	152	116	43	279	Great Smoky Mountains NP	TN	Doug and Jess Riddle
Carolina	<i>Halesia diptera</i>	2007	40	78	33	126	Wilcox	AL	Tommy Lawler
Two-Wing									
Silverpalm	<i>Coccothrinax argentata</i> *	1976	22	26	4	49	Monroe	FL	Monay Markey
Florida	<i>Coccothrinax argentata</i> *	1979	19	33	4	53	Monroe	FL	Monay Markey
Florida									
Smoketree	<i>Cotinus obovatus</i>	2009	102	42	43	155	Fayette	KY	Bridget Abernathy
American									
Snowbell	<i>Styrax americanus</i>	2009	20	17	26	44	Suffolk	VA	Byron Carmean, Gary Williamson
American	<i>Styrax grandifolius</i>	2009	20	17	26	44	Suffolk	VA	B. Carmean, G. Williamson, M. Lane
Bigleaf									
Soapberry	<i>Sapindus saponaria</i> var. <i>drummondii</i>	2007	126	59	39	195	Johnson	KS	Rick Spurgeon
Western									
Soldierwood	<i>Colubrina elliptica</i>	2009	85	28	24	119	Monroe	FL	Bob Showler
Sourwood	<i>Oxydendrum arboreum</i>	1998	139	81	50	233	Amelia	VA	John Anderson, Joseph Humphreys
Sparkleberry	<i>Vaccinium arboreum</i> *	2009	48	27	39	85	Walton	FL	Donnie Slay
Tree	<i>Vaccinium arboreum</i> *	2007	47	28	41	85	Choctaw	AL	Earl Jenkins
Tree	<i>Vaccinium arboreum</i> *	2007	62	18	31	88	Houston	TX	Waymon Vest
Tree									

Species/Status		Year	Circumference" / Height/ Spread/ Points				Location		Nominator
Spicebush									
	<i>Lindera benzoin</i>	2009	102	19	20	126	Berrien	MI	Andrew Sawyer
Spruce									
Black	<i>Picea mariana</i>	1989	68	78	21	151	Meford	WI	Nick Risch
Black hills	<i>Picea glauca</i> var. <i>densata</i>	2004	117	103	30	228	Black Hills NF	SD	Mark Rouw
Blue	<i>Picea pungens</i>	1991	190	127	43	328	Ashley NF	UT	A.J. Frandsen, Sherel Goodrich
Engelmann	<i>Picea engelmannii</i>	2005	292	181	50	486	Boise	ID	Christopher Wagner, Penny Myers
Norway	<i>Picea abies</i> Δ	2005	186	110	64	312	Oneida	NY	Charles McFadden
Red	<i>Picea rubens</i>	2007	152	147	24	305	Great Smoky Mountains NP	NC	Jess Riddle, Josh Kelly
Sitka	<i>Picea sitchensis</i>	1987	668	191	96	883	Olympic NP	WA	Robert Van Pelt
White	<i>Picea glauca</i>	1975	126	130	30	264	Koochiching	MN	Richard Stapleton
Stewartia									
Virginia	<i>Stewartia malacodendron</i>	2009	7	20	24	33	Chesapeake	VA	Jack Campbell
Stopper									
Boxleaf	<i>Eugenia foetida</i>	1999	12	25	9	39	Monroe	FL	Joseph Nemec
Red	<i>Eugenia rhombea</i>	1999	19	28	11	50	Monroe	FL	Joseph Nemec
Redberry	<i>Eugenia confusa</i>	1993	61	41	20	107	Dade	FL	C. Lippincott
White	<i>Eugenia axillaris</i>	1993	17	25	7	44	Lee	FL	Richard R. Workman
Strongback									
Bahama	<i>Bourreria succulenta</i>	1999	37	33	17	74	Monroe	FL	Joseph Nemec
Sugarberry									
	<i>Celtis laevigata</i>	2009	243	74	93	340	Hamilton	FL	Harold Tyree
Sumac									
Evergreen Schuman	<i>Rhus virens</i> *	2005	31	14	27	52	New Braunfels	TX	RaeAnn and Loddie Roeder, Wiliam
Evergreen	<i>Rhus virens</i> *	2006	37	15	16	56	Concan	TX	Bill Graves
Littleleaf	<i>Rhus microphylla</i>	2007	13	14	20	32	Graham	AZ	Judy and David Thornburg
Mearns	<i>Rhus virens</i> var. <i>choriophylla</i>	2007	21	20	16	45	Coronado NF	AZ	K. Morrow, R. Zahner
Prairie	<i>Rhus lanceolata</i>	1994	71	26	45	108	Gillespie	TX	Raymond C. Doggett
Shining	<i>Rhus copallinum</i> *	2000	38	29	32	75	Pontotoc	MS	Robert Bean
Shining	<i>Rhus copallinum</i> *	2007	29	35	24	70	Bullitt	KY	Rickey Harwell, G.W. Poyner
Smooth	<i>Rhus glabra</i>	2001	36	52	28	95	Twiggs	GA	Roger Blount
Staghorn	<i>Rhus typhina</i>	1985	50	57	41	117	Tallapoosa	AL	Ted Kretschmann
Sugar	<i>Rhus ovata</i>	1995	71	34	36	114	Tonto NF	AZ	Ken Morrow
Swamp-Privet									
Eastern	<i>Forestiera acuminata</i>	2007	31	46	29	84	Toombs	GA	Justin Tyson, Mike Waters
Sweetgum									
	<i>Liquidamber styraciflua</i>	2007	203	160	82	384	Congaree Swamp NP	SC	Robert H. Jones, Lee Reynaud
Sweetleaf									
Common	<i>Symplocos tinctoria</i>	1986	43	60	32	111	Chesapeake	VA	Byron Carmean, Gary Williamson
Sycamore									
American	<i>Platanus occidentalis</i>	2007	422	129	105	577	Ashland	OH	Jack Basinger, Loren Latimer
Arizona	<i>Platanus wrightii</i>	2005	373	71	73	462	Coconino NF	AZ	David Thornburg, Harry Untiedt
California	<i>Platanus racemosa</i>	1998	350	95	108	472	San Juan Capistrano	CA	Art Cowley
Tallowtree									
	<i>Triadica sebifera</i> * Δ	2009	72	43	42	126	Norfolk	VA	Carmean, Williamson, Augustin
	<i>Triadica sebifera</i> * Δ	2009	72	45	40	127	Norfolk	VA	Byron Carmean, Gary Williamson
Tallowwood									
	<i>Ximenia americana</i>	1998	31	23	10	57	Monroe	FL	Joseph Nemec
Tamarack									
	<i>Larix laricina</i>	2009	133	71	60	219	Crow Wing	MN	Jim and Anne Pierson



White Alder, Polk, Oregon — Photographs © Freesolo

Species/Status		Year	Circumference" / Height' / Spread' / Points				Location		Nominator
Tamarind									
	<i>Tamarindus indica</i> Δ	1986	85	58	44	154	Monroe	FL	Michael J. Cullen, David M. Sinclair
Tamarisk									
	<i>Tamarix chinensis</i> Δ	1999	170	45	50	228	Albuquerque	NM	Robert Squires
Tanoak									
	<i>Lithocarpus densiflorus</i>	1997	303	135	63	454	Curry	OR	George Miller
Tesota									
Desert ironwood	<i>Olneya tesota</i>	2005	198	33	55	245	Riverside	CA	Art Cowley
Tetrazygia									
Florida	<i>Tetrazygia bicolor</i>	2005	24	21.5	15	49	Dade	FL	David L. Lysinger
Thatchpalm									
Florida	<i>Thrinax radiata</i>	1991	17	34	9	53	Broward	FL	D. Spicer, W. Harms, W. Tesouro
Key	<i>Thrinax morrisii</i>	1996	20	20	7	42	Dade	FL	Don Evans, Daniel B. Ward
Torchwood									
Balsam	<i>Amyris balsamifera</i>	1986	21	25	17	50	Monroe	FL	Mike Cullen, David Sinclair
Torchwood	<i>Amyris elemifera</i>	2009	20	30	14	54	Monroe	FL	Bob Showler
Torreya									
Florida	<i>Torreya taxifolia</i>	1972	124	53	40	187	Warren	NC	Robert Simons
Toyon									
	<i>Heteromeles arbutifolia</i> *	2005	54	28	39	92	Orange	CA	Arthur P. Cowley
	<i>Heteromeles arbutifolia</i> *	2008	46	40	35	95	Orange	CA	Mike Swingholm
Tree Tobacco									
	<i>Nicotiana glauca</i> * Δ	2007	18	20	16	42	Tonto NF	AZ	Andy and Marsha Allgood
	<i>Nicotiana glauca</i> * Δ	2007	20	20	17	44	University of Arizona	AZ	Ken Morrow
Tupelo									
Black	<i>Nyssa sylvatica</i>	2001	233	92	92	348	Wood	TX	William Godwin
Ogeechee	<i>Nyssa ogeche</i>	2007	242	45	50	300	Toombs	GA	Justin Tyson, Mike Waters
Swamp	<i>Nyssa biflora</i>	2007	188	162	135	384	Congaree Swamp NP	SC	Samuel E. Porth
Water	<i>Nyssa aquatica</i>	2009	474	102	54	590	Hampton	VA	Carmean, Williamson, Rasnake, Kessler
Vauquelinia									
Torrey	<i>Vauquelinia californica</i>	1993	78	47	40	135	Organ Pipe Cactus NM	AZ	Robert Zahner
Velvetseed									
Elliptic-leaf	<i>Guettarda elliptica</i>	2009	38	34	20	77	Monroe	FL	Bob Showler
Roughleaf	<i>Guettarda scabra</i>	1998	13	30	12	46	Monroe	FL	Joseph Nemec, Daniel Ward
Viburnum									
Possumhaw	<i>Viburnum nudum</i>	2003	17	33	20	55	Oconee	GA	Larry Morris, Scott Bryant
Walnut									
Arizona	<i>Juglans major</i>	2007	215	81	88	318	Prescott NF	AZ	D. Thornburg, H. Untiedt, A. Allgood
Black	<i>Juglans nigra</i>	1991	312	145	460	572	Multnomah	OR	Dan Tillman
Little	<i>Juglans microcarpa</i>	2007	180	41	60	236	Barber	KS	Stan Roth
Northern California	<i>Juglans hindsii</i>	2008	444	93	118	567	El Dorado	CA	Susan Alison Fulmer
Southern California	<i>Juglans californica</i>	1973	259	112	106	398	Butte	CA	Gordon R. Foster
Water-Elm									
	<i>Planera aquatica</i>	2009	207	66	61	288	Gilchrist	FL	Bob Heeke-SRWMD
Waterlocust									
	<i>Gleditsia aquatica</i>	1993	121	74	63	211	Wyndmoor	PA	Maurice E. Hobaugh
White Ironwood									
	<i>Hypelate trifoliata</i>	2009	79	45	38	134	Monroe	FL	Joseph Nemec

Species/Status		Year	Circumference" / Height' / Spread' / Points				Location		Nominator
White-Cedar									
Atlantic	<i>Chamaecyparis thyoides</i>	2009	194	57	26	258	Muskingum	OH	Brian Riley
Northern	<i>Thuja occidentalis</i>	2009	296	73	39	379	Ontonogon	MI	Andrew and Noah Sawyer
Wild-Dilly									
	<i>Manilkara jaimiqui</i>	2008	36	24	32	68	Monroe	FL	Stephen Hodges
Willow									
Arroyo	<i>Salix lasiolepis</i>	2003	89	41	49	142	San Juan Capistrano	CA	Art Cowley
Bebb	<i>Salix bebbiana</i>	2007	111	21	18	137	Apache NF	AZ	David Thornburg
Black	<i>Salix nigra</i>	2008	384	63	73	465	Hennepin	MN	Kevin J. O'Connor
Feltleaf	<i>Salix alaxensis</i>	2001	41	36	24	83	Fort Wainwright	AK	Mark R. Corbet
Geyer	<i>Salix geyeriana</i>	2007	10	13	14	27	Fort Apache	AZ	David Thornburg
Goodding	<i>Salix gooddingii</i>	1993	354	45	89	421	Luna	NM	Ralph Fisher, Jr.
Hooker	<i>Salix hookeriana</i>	2001	65	50	39	125	Tillamook	OR	Joe Travers
Peachleaf	<i>Salix amygdaloides</i>	1989	396	80	77	495	Greenfield Park	WI	Eugene Zanow
Purple-osier	<i>Salix purpurea</i> Δ	2009	9	17	27	33	Monroe	NY	Richard Cook, Douglas Bassett
Pussy	<i>Salix discolor</i>	2009	65	30	22	101	Amherst	VA	B. Carmean, G. Williamson, D. Meeks
Scouler	<i>Salix scouleriana</i>	1995	149	66	54	229	Maury Island	WA	Robert Van Pelt, Ron Brightman
Weeping	<i>Salix babylonica</i> Δ	2009	303	80	94	407	Berrien	MI	Andrew and Noah Sawyer
White	<i>Salix alba</i> Δ	2009	362	58	81	440	Ingham	MI	Ted and Tedd Reuschel
Yellow	<i>Salix lutea</i>	2007	17	14	12	34	Coconino NF	AZ	David Thornburg, Andy Allgood
Yewleaf	<i>Salix taxifolia</i>	2009	103	17	14	124	Presidio	TX	Oscar Mestas
Winterberry									
Common	<i>Ilex verticillata</i> *	2007	17	17	19	39	Orange	VA	Jess Riddle
Common	<i>Ilex verticillata</i> *	2009	25	14	11	42	Chesapeake	VA	Byron Carmean, Gary Williamson
Mountain	<i>Ilex montana</i>	2007	30	40	25	76	Mountain Lake	VA	Byron Carmean, Gary Williamson
Witch-Hazel									
	<i>Hamamelis virginiana</i>	2009	186	16	19	207	Berrien	MI	Andrew Sawyer
Yaupon									
	<i>Ilex vomitoria</i>	2009	67	60	48	139	Putnam	FL	Ned Neenan
Yellow-Elder									
	<i>Tecoma stans</i>	2003	20	23	19	48	Tonto NF	AZ	Ken Morrow
Yellow-Poplar									
Tuliptree	<i>Liriodendron tulipifera</i>	2007	359	115	83	495	Chesapeake	VA	Byron Carmean, Gary Williamson
Yellowwood									
	<i>Cladrastis kentukea</i> *	2007	221	62	71	301	Morristown	NJ	Lisa Armstrong
	<i>Cladrastis kentukea</i> *	2005	214	73	67	304	Jefferson	KY	Robert Essner
Yew									
Florida	<i>Taxus floridana</i>	1986	27	22	23	55	Liberty	FL	Joey T. Brady, Jerome Bracewell
Pacific	<i>Taxus brevifolia</i>	1959	180	54	30	242	Mineral	WA	B.Malcomb,L.Barnhouse,A.Storkman,RLevitt
Yucca									
Aloe	<i>Yucca aloifolia</i>	2001	19	14	4	34	Brantley	GA	Jimmy Mock
Beaked	<i>Yucca thompsoniana</i>	2008	98	17	18	120	Fort Stockton	TX	Daniel Goodspeed
Faxon	<i>Yucca faxoniana</i> *	2007	73	19	7	94	Jeff Davis	TX	Oscar Mestas
Faxon	<i>Yucca faxoniana</i> *	2007	72	23	10	98	Brewster	TX	Oscar Mestas
Mojave	<i>Yucca schidigera</i>	1987	58	31	7	91	Mojave National Preserve	CA	R. Alexander, G. Meckfessel, K. Nosstrom
Moundlilly	<i>Yucca gloriosa</i>	1998	118	32	38	160	Huntington Beach	CA	Art Cowley
Schott	<i>Yucca schottii</i>	2005	44	20	12	67	Patagonia	AZ	Ken Morrow
Soaptree	<i>Yucca elata</i>	1991	60	26	12	89	Deming	NM	Frank T. Callahan
Torrey	<i>Yucca torreyi</i>	1987	86	23	6	111	Lincoln NF	NM	John McNelly

SPECIES WITHOUT CHAMPS

From trees that were dethroned because of the 10 year rule, to newly recognized species that are eligible for the National Register of Big Trees, there are 221 tree species that currently do not have a champion. We highly encourage you to go out, grab your tree ID book and start Big Tree hunting. Measuring guidelines and contact information for state coordinators can be found on our website at

www.americanforests.org/resources/bigtrees.



Overcup Oak, Southampton, Virginia – Robert Llewellyn

Species	Common Name	Scientific Name
Acacia	Long-spine	<i>Acacia macracantha</i>
Alder	Seaside	<i>Alnus maritima</i>
Apricot	Desert	<i>Prunus fremontii</i>
Ash	Singleleaf	<i>Fraxinus anomala</i> var. <i>anomala</i>
Bayberry	Evergreen	<i>Morella caroliniensis</i>
Baycedar		<i>Suriana maritima</i>
Birch	Kenai	<i>Betula papyrifera</i> var. <i>kenaica</i>
Bitterbush		<i>Picramnia pentandra</i>
Bladdernut	Sierra	<i>Staphylea bolanderi</i>
Blolly	Longleaf	<i>Guapira discolor</i>
Blueblossom	Blue-myrtle	<i>Ceanothus thyrsiflorus</i>
Buccaneer-Palm		<i>Pseudophoenix sargentii</i>
Buckthorn	Birchleaf	<i>Rhamnus betulifolia</i>
Buckthorn	Glossy	<i>Rhamnus frangula</i>
Buffaloberry	Silver	<i>Shepherdia argentea</i>
Burningbush	Western	<i>Euonymus occidentalis</i>
Cajeput-Tree		<i>Melaleuca quinquenervia</i>
Capertree	Limber	<i>Capparis flexuosa</i>
Castorbean		<i>Ricinus communis</i>
Casuarina	Horsetail	<i>Casuarina equisetifolia</i>
Catclaw	Roemer	<i>Acacia roemeriana</i>
Ceanothus	Feltleaf	<i>Ceanothus arboreus</i>
Ceanothus	Greenbark	<i>Ceanothus spinosus</i>

Species	Common Name	Scientific Name
Cherry	Sour	<i>Prunus cerasus</i>
Cherry	Hollyleaf	<i>Prunus ilicifolia</i>
Cherry	Chokecherry, western	<i>Prunus virginiana</i> var. <i>melanocarpa</i>
Cinnecord		<i>Acacia choriophylla</i>
Coconut	Palm	<i>Cocos nucifera</i>
Cocoplum		<i>Chrysobalanus icaco</i>
Colubrina	Coffee	<i>Colubrina arborescens</i>
Colubrina	Cuba	<i>Colubrina cubensis</i>
Corkwood		<i>Leitneria floridana</i>
Crossopetalum	Florida	<i>Crossopetalum rhacoma</i>
Crucifixion-Thorn		<i>Castela emoryi</i>
Cupania	Florida	<i>Cupania glabra</i>
Cypress	Cuyamaca	<i>Cupressus arizonica</i> ssp. <i>stephensonii</i>
Cypress	Gowen	<i>Cupressus goweniana</i> ssp. <i>goweniana</i>
Cyrilla	Littleleaf	<i>Cyrilla parvifolia</i>
Dogwood	Smooth	<i>Cornus glabrata</i>
Downy-Myrtle		<i>Rhodomyrtus tomentosa</i>
Elder	American	<i>Sambucus canadensis</i>
Elder	Blackbead	<i>Sambucus melanocarpa</i>
Elder	Pacific red	<i>Sambucus pubens</i>
Elder	Velvet	<i>Sambucus velutina</i>

Species	Common Name	Scientific Name
Falsebox		<i>Gyminda latifolia</i>
Fiddlewood	Berlandier	<i>Citharexylum berlandieri</i>
Fir	Balsam	<i>Abies balsamea</i>
Fir	Bristlecone	<i>Abies bracteata</i>
Fir	Grand	<i>Abies grandis</i>
Fir	California red	<i>Abies magnifica</i>
Florida-Boxwood		<i>Schaefferia frutescens</i>
Flowerfence		<i>Caesalpinia pulcherrima</i>
Forestiera	Desert-olive	<i>Forestiera shrevei</i>
Fremontia	Mexican	<i>Fremontodendron mexicanum</i>
Graytwig		<i>Schoepfia schreberi</i>
Guava		<i>Psidium guajava</i>
Guiana-Plum		<i>Drypetes lateriflora</i>
Hackberry	Lindheimer	<i>Celtis lindheimeri</i>
Hawthorn	Rome	<i>Crataegus aemula</i>
Hawthorn	Alabama	<i>Crataegus alabamensis</i>
Hawthorn	Barberry	<i>Crataegus berberifolia</i>
Hawthorn	Bicknell	<i>Crataegus bicknellii</i>
Hawthorn		<i>Crataegus brachyphylla</i>
Hawthorn	Brainerd	<i>Crataegus brainerdii</i>
Hawthorn	Brazos	<i>Crataegus brazoria</i>
Hawthorn	Buckley	<i>Crataegus buckleyi</i>
Hawthorn	Pear	<i>Crataegus calpodendron</i>
Hawthorn	Pringle	<i>Crataegus coccinea</i> var. <i>pringlei</i>
Hawthorn	Hillside	<i>Crataegus collina</i>
Hawthorn	Aiken	<i>Crataegus dispar</i>
Hawthorn	Dodge	<i>Crataegus dodgei</i>
Hawthorn		<i>Crataegus egens</i>
Hawthorn		<i>Crataegus fecunda</i>
Hawthorn		<i>Crataegus florifera</i>
Hawthorn		<i>Crataegus formosa</i>
Hawthorn	Gattinger	<i>Crataegus gattingeri</i>
Hawthorn	Gregg	<i>Crataegus greggiana</i>
Hawthorn	Harbison	<i>Crataegus harbisonii</i>
Hawthorn	Hill's scarlet	<i>Crataegus hillii</i>
Hawthorn	Holme	<i>Crataegus holmesiana</i>
Hawthorn	Lake Ella	<i>Crataegus integra</i>
Hawthorn	Stolon-bearing	<i>Crataegus iracunda</i>
Hawthorn	Miss Jones	<i>Crataegus jonesae</i>
Hawthorn	Pensicola	<i>Crataegus lacrimata</i>
Hawthorn		<i>Crataegus lasa</i>
Hawthorn	Bigfruit	<i>Crataegus macrosperma</i>
Hawthorn	Okanagan	<i>Crataegus okanaganensis</i>
Hawthorn	O'Kennon	<i>Crataegus okennonii</i>
Hawthorn	Ouachita	<i>Crataegus ouachitensis</i>

Species	Common Name	Scientific Name
Hawthorn	Bird-cherry	<i>Crataegus padifolia</i>
Hawthorn	Pennsylvania	<i>Crataegus pennsylvanica</i>
Hawthorn	Plumleaf	<i>Crataegus persimilis</i>
Hawthorn	Phipp	<i>Crataegus phippsii</i>
Hawthorn	Poplar	<i>Crataegus populnea</i>
Hawthorn	Frosted	<i>Crataegus pruinosa</i>
Hawthorn		<i>Crataegus recurva</i>
Hawthorn	Reverchon	<i>Crataegus reverchonii</i>
Hawthorn	River	<i>Crataegus rivularis</i>
Hawthorn	Willow	<i>Crataegus saligna</i>
Hawthorn	Schuette	<i>Crataegus schuettei</i>
Hawthorn		<i>Crataegus senta</i>
Hawthorn	Littlehip	<i>Crataegus spathulata</i>
Hawthorn	Quebec	<i>Crataegus submollis</i>
Hawthorn	Caughuawaga	<i>Crataegus suborbiculata</i>
Hawthorn	Suksdorf	<i>Crataegus suksdorfii</i>
Hawthorn	Sawtooth	<i>Crataegus viburnifolia</i>
Hawthorn		<i>Crataegus visenda</i>
Hazel	California	<i>Corylus cornuta</i> var. <i>californica</i>
Hibiscus	Sea	<i>Hibiscus tiliaceus</i>
Hickory	Scrub	<i>Carya floridana</i>
Holly	Carolina	<i>Ilex ambigua</i>
Holly	Sarvis	<i>Ilex amelanchier</i>
Holly	Tawnberry	<i>Ilex krugiana</i>
Holly	Georgia	<i>Ilex longipes</i>
Holly	Mountain	<i>Ilex mucronata</i>
Holly	Dune	<i>Ilex opaca</i> var. <i>arenicola</i>
Hoptree	California	<i>Ptelea crenulata</i>
Hoptree	Common	<i>Ptelea trifoliata</i>
India-Almond		<i>Terminalia catappa</i>
Jamaican Nettle-tree	Florida	<i>Trema micrantha</i>
Jujube	Indian	<i>Ziziphus mauritiana</i>
Juniper	Pinchot	<i>Juniperus pinchotii</i>
Larch	Western	<i>Larix occidentalis</i>
Laurelcherry	Carolina	<i>Prunus caroliniana</i>
Lebbek	Lebbek	<i>Albizia lebbek</i>
Leucaena	White leadtree	<i>Leucaena leucocephala</i>
Licaria	Florida	<i>Licaria triandra</i>
Lidflower	Pale	<i>Calyptanthus pallens</i>
Lotebush		<i>Ziziphus obtusifolia</i>
Maidenbrush	Marlberry	<i>Ardisia escallonioides</i>
Maidenbrush		<i>Savia bahamensis</i>
Mangrove	White	<i>Laguncularia racemosa</i>
Mangrove	Red	<i>Rhizophora mangle</i>

Species	Common Name	Scientific Name
Maple	Striped	<i>Acer pensylvanicum</i>
Mexican-Buckeye		<i>Ungnadia speciosa</i>
Mountain-Ash	Showy	<i>Sorbus decora</i>
Mountain-Ash	Sitka	<i>Sorbus sitchensis</i>
Mountain-Holly		<i>Ilex collina</i>
Nectandra	Florida	<i>Nectandra coriacea</i>
Nolina	Bigelow	<i>Nolina bigelovii</i>
Oak	Mapleleaf	<i>Quercus acerifolia</i>
Oak	Coast live	<i>Quercus agrifolia</i>
Oak	Mexican	<i>Quercus carmenensis</i>
Oak	Cedros Island	<i>Quercus cedrosensis</i>
Oak	Water	<i>Quercus nigra</i> L.
Oak	Channel Islands scrub	<i>Quercus pacifica</i>
Oak	Shreve	<i>Quercus parvula</i>
Oak	Netleaf white	<i>Quercus polymorpha</i>
Oak	Robust	<i>Quercus robusta</i>
Oak	Lateleaf	<i>Quercus tardifolia</i>
Oak	Island live	<i>Quercus tomentella</i>
Oak	Sonoran	<i>Quercus viminea</i>
Orange	Hardy	<i>Poncirus trifoliata</i>
Paloverde	Texas	<i>Parkinsonia texana</i>
Pawpaw	Bigflower	<i>Asimina obovata</i>
Pawpaw	Smallflower	<i>Asimina parviflora</i>
Peppertree		<i>Schinus molle</i>
Peppertree	Brazil	<i>Schinus terebinthifolius</i>
Pine	Knobcone	<i>Pinus attenuata</i>
Pine	Bolander's	<i>Pinus contorta</i> var. <i>bolanderi</i>
Pine	Parry pinyon	<i>Pinus quadrifolia</i>
Pine	Torrey	<i>Pinus torreyana</i>
Pistachio	Mexican	<i>Pistacia mexicana</i>
Plum	Chickasaw	<i>Prunus angustifolia</i>
Plum	Canada	<i>Prunus nigra</i>
Plum	Klamath	<i>Prunus subcordata</i>
Portiatree		<i>Thespesia populnea</i>
Prickly-Ash	Common	<i>Zanthoxylum americanum</i>
Prickly-Ash	Biscayne	<i>Zanthoxylum coriaceum</i>
Prickly-Pear	Brazilian	<i>Brasiliopuntia brasiliensis</i>
Rapanea	Florida	<i>Myrsine cubana</i>
Russian-Olive		<i>Elaeagnus angustifolia</i>
Sapium	Jumping-bean	<i>Sebastiania bilocularis</i>
Sapodilla		<i>Manilkara zapota</i>
Seven-Year-Apple		<i>Casasia clusiifolia</i>
Silktassel	Wavyleaf	<i>Garrya elliptica</i>
Smokethorn		<i>Psoralea arguta</i>

Species	Common Name	Scientific Name
Snowbell	Sycamore-leaf	<i>Styrax platanifolius</i>
Soapberry	Wingleaf	<i>Sapindus saponaria</i>
Spruce	Brewer	<i>Picea breweriana</i>
Stewartia	Mountain	<i>Stewartia ovata</i>
Stopper	Twinberry	<i>Myrcianthes fragrans</i>
Stopper	Long-stalk	<i>Psidium longipes</i>
Strongback	Rough	<i>Bourreria radula</i>
Sugar-Apple		<i>Annona squamosa</i>
Sumac	Laurel	<i>Malosma laurina</i>
Sumac	Shining	<i>Rhus copallinum</i>
Sumac	Southern	<i>Rhus copallinum</i> var. <i>leucantha</i>
Sumac	Lemonade	<i>Rhus integrifolia</i>
Sumac	Kearney	<i>Rhus kearneyi</i>
Swamp-Privet	Texas	<i>Forestiera angustifolia</i>
Swamp-Privet	Florida	<i>Forestiera segregata</i>
Tamarisk	French	<i>Tamarix gallica</i>
Tamarisk	Small-flower	<i>Tamarix paryiflora</i>
Torreya	California	<i>Torreya californica</i>
Tree-Cactus	Key	<i>Pilosocereus robinii</i>
Trema	West Indies	<i>Trema lamarckiana</i>
Vauquelinia	Slimleaf rosewood	<i>Vauquelinia corymbosa</i>
Vauquelinia	Fewflower	<i>Vauquelinia pauciflora</i>
Viburnum	Walter	<i>Viburnum obovatum</i>
Willow	Littletree	<i>Salix arbusculoides</i>
Willow	Bonpland	<i>Salix bonplandiana</i>
Willow	Coastal plains	<i>Salix caroliniana</i>
Willow	Sandbar	<i>Salix exigua</i>
Willow	Florida	<i>Salix floridana</i>
Willow	Crack	<i>Salix fragilis</i>
Willow	Sandbar	<i>Salix interior</i>
Willow	Pacific	<i>Salix lucida</i> ssp. <i>lasiandra</i>
Willow	Shining	<i>Salix lucida</i> ssp. <i>lucida</i>
Willow	Mackenzie	<i>Salix mackenziana</i>
Willow	Dusky	<i>Salix melanopsis</i>
Willow	Satiny	<i>Salix pellita</i>
Willow	Meadow	<i>Salix petiolaris</i>
Willow	Balsam	<i>Salix pyrifolia</i>
Willow	Silky	<i>Salix sericea</i>
Willow	Autumn	<i>Salix serissima</i>
Willow	Northwest	<i>Salix sessilifolia</i>
Willow	Sitka	<i>Salix sitchensis</i>
Willow	Basket	<i>Salix viminalis</i>
Winterberry	Smooth	<i>Ilex laevigata</i>
Yucca	Trecul	<i>Yucca treculeana</i>

INSIDE SPECIAL REPORT: WHITEBARK PINE

American Forests

WWW.AMERICANFORESTS.ORG

SPRING 2010 \$3.00



CAN THIS TREE BE SAVED?

WHITEBARK PINE IMPERILED —33

SUCCESS IN THE FIRST
GLOBAL RELEAF FOREST —26

BIG CHANGES FOR BIG TREES —8



American Forests

VOL 116 NO 1

SPRING 2010

FEATURES

BIG CHANGES FOR BIG TREES 8

The National Register of Big Trees has some surprises this year — by Whit Bronaugh

A SONG OF SUCCESS IN THE JACK-PINE FORESTS 24

The species that spurred the first Global ReLeaf forest has come a long way in the last 20 years — by Gary Lantz

WHITEBARK PINE: ECOSYSTEM IN PERIL 33

A special report on this vulnerable species that supports life at higher altitudes — by Gary Lantz



DEPARTMENTS



EDITORIAL 7

Spring: A Time Of Renewal
Gerry Gray

GLOBAL RELEAF 2010 26

Descriptions of this year's ecosystem restoration projects

CLIPPINGS 13

News from the World of Trees

Melanie Parker Wins Andrus Award • San Antonio Goes Greener • (More) Trees From Space • An Anniversary With Jack Daniel's • Leelanau Wildflower Rescue • American Le Mans Series • Global ReLeaf Hits 30 Million • Steelroots

EARTH KEEPERS 45

Championing The Champs
State Big Tree Coordinators make the National Register possible
By Sarah McVicar

KIDS PAGE 48

Join Blossom and Sprig to learn about Earth Day and how to plant a tree.



3a

Cover: A worker in Glacier National Park "cages" cones on a whitebark pine to protect them from squirrels and birds until they can be harvested for a nursery.

Photo by Chris Petersen



Mixed Sources

Product group from well-managed forests, controlled sources and recycled wood or fibre

www.fsc.org Cert no. SGS-COC-004057
© 1996 Forest Stewardship Council



PRINTED WITH
SOY INK™



SPRING 2010 VOL.116 NO.1

Publisher

American Forests

Editor

Don Smith

Contributing Editors

Bill Rooney, Jane Braxton Little

Editorial Assistants

Katrina Marland

Sarah McVicar

Art Director

Lydia Scalettar

The objective of AMERICAN FORESTS, publisher of *American Forests* magazine, is to help people plant and care for trees for ecosystem restoration and healthier communities.

American Forests magazine (ISSN 0002-8541) is published quarterly by AMERICAN FORESTS at 734 15th St. NW, 8th floor, Washington, DC 20005 (mailing address: P.O. Box 2000, Washington, DC 20013). Phone 202/737-1944. Web address: <http://www.americanforests.org>.

Subscription price is \$25 a year. Editors are not responsible for loss of or damage to manuscripts and photographs while in their possession or in transit or for views expressed in signed articles. Abstracted and indexed in Academic Abstracts and Magazine Article Summaries; call toll free, 800/653-2726, or write: 83 Pine St., Peabody, MA 01960. Indexed in Readers' Guide to Periodical Literature (800/367-6770). Periodicals postage paid at Washington, DC, and additional entry offices. Copyright © 2008 by AMERICAN FORESTS. POSTMASTER: Send address changes to *American Forests* magazine, P.O. Box 2000, Washington, DC 20013. Printed in USA.



Ailing Pin Oak

Q: I am trying to discern what kind of disease my Pin Oak tree has. I live in northern Virginia, and the tree has suffered the problem for the last two years (2008 and 2009). This year being worse than the previous. The leaves develop what looks like very minute webbing or cocooning (I'm thinking it is some kind of fungus) in the connecting veins on the backs of leaves and it seems to slowly eat the leaves away. I never see any larvae on the leaves.

This starts in May and lasts throughout the summer. The leaves drop off before their dead and often curl and die on the tree. This hasn't affected the tree's ability to grow more leaves, but they often become blighted by the same thing.

I was hoping to treat the problem with some kind of herbicide that I could feed the tree in the spring to keep it

from developing, or at least help the tree to fight this affliction. The tree is 12 years old and 30 feet all. It was probably 10 years old when we planted it (the trunk was probably 3 inches thick at the time) and has not had a problem until the last few years. Thanks for any help you can give me.

~Randy

A: The arborists here think that perhaps you are seeing the damage caused by a leaf roller or oak leaf skeletonizer. Without seeing the actual insect, it is difficult to recommend a treatment.

We suggest that in the spring when the damage is visible, carefully unroll one of the curled leaves and look for the insect, which may be inside the rolled leaf. At that point, you might want to consult a qualified arborist to help you identify the pest and offer a course of treatment.

EDITOR'S NOTE

This issue we take you to northern Michigan to visit the site of the first Global ReLeaf forest project 20 years ago. That planting – and many that have followed in the area -- created nesting habitat for one of America's rarest birds, the Kirtland's warbler.

On May 15 we'll return to the area and plant the first of several hundred thousand more jack pine trees, the Kirtland's favorite, which will bring to 1 million the number of these trees planted thanks to the generous support of our members, donors and corporate sponsors.

We also present a special report on the grave condition of whitebark pine, a rugged and quintessential alpine tree, now on the brink of extinction. Can renewed efforts save this species? This report is being reprinted for nature and visitor centers, and schools as we help to shine a spotlight on the needs of this tree and those working for its survival. Contact us for copies.

These trees are just two of the important species included in the 43 Global ReLeaf projects that we'll plant this year which will add nearly 5 million toward our goal to plant 100 million by 2020 (page 27).

For the latest on the nation's champion trees, turn to page 8 for a favorite writer's take on the changes to this year's list of big trees. Some of those behind this program are this month's Earth Keepers. For the complete list of big trees and the height, crown and trunk measurements that earned them titles, visit our website.

Next issue we'll report on the trees of the White House and on our connection to the 1910 Big Burn, one of the largest conflagrations in U.S. history and a blaze that captured the attention of the nation and of policy makers. Special events, museum exhibits and tours have already begun in the Northern Rockies around Wallace, Idaho, with observances throughout the region on August 21st. See the complete list in the May edition of our free e-newsletter Forestbytes. Sign up at american-forests.org.

How are we doing? We would love to hear from you. — Dan Smith, Editor.

Big Changes

We humans are fortunate in having relatively long lives. Oh, sure, we may be outlasted by the tortoise, the quahog clam, and the Antarctic sponge, but we can claim a superior perspective on time over the vast majority of the Earth's 5-15 million plant and animal species. A day in the life of a single celled organism is their life. Most of our fellow beings, being insects, don't even know what a year is. We, however, can personally observe, and accumulate wisdom over, the passage of decades. We smile knowingly when a child says, "Are we there yet?" and we try to teach them the patience our long experience has taught us. Of course, after the tenth "Are we there yet?" we become the child all over again, in need of the parental wisdom we thought we had.

The Class of 2010
includes a total of 733 champs
and co-champs
representing 637 species
and varieties of native
and naturalized trees in the

United States

— by —

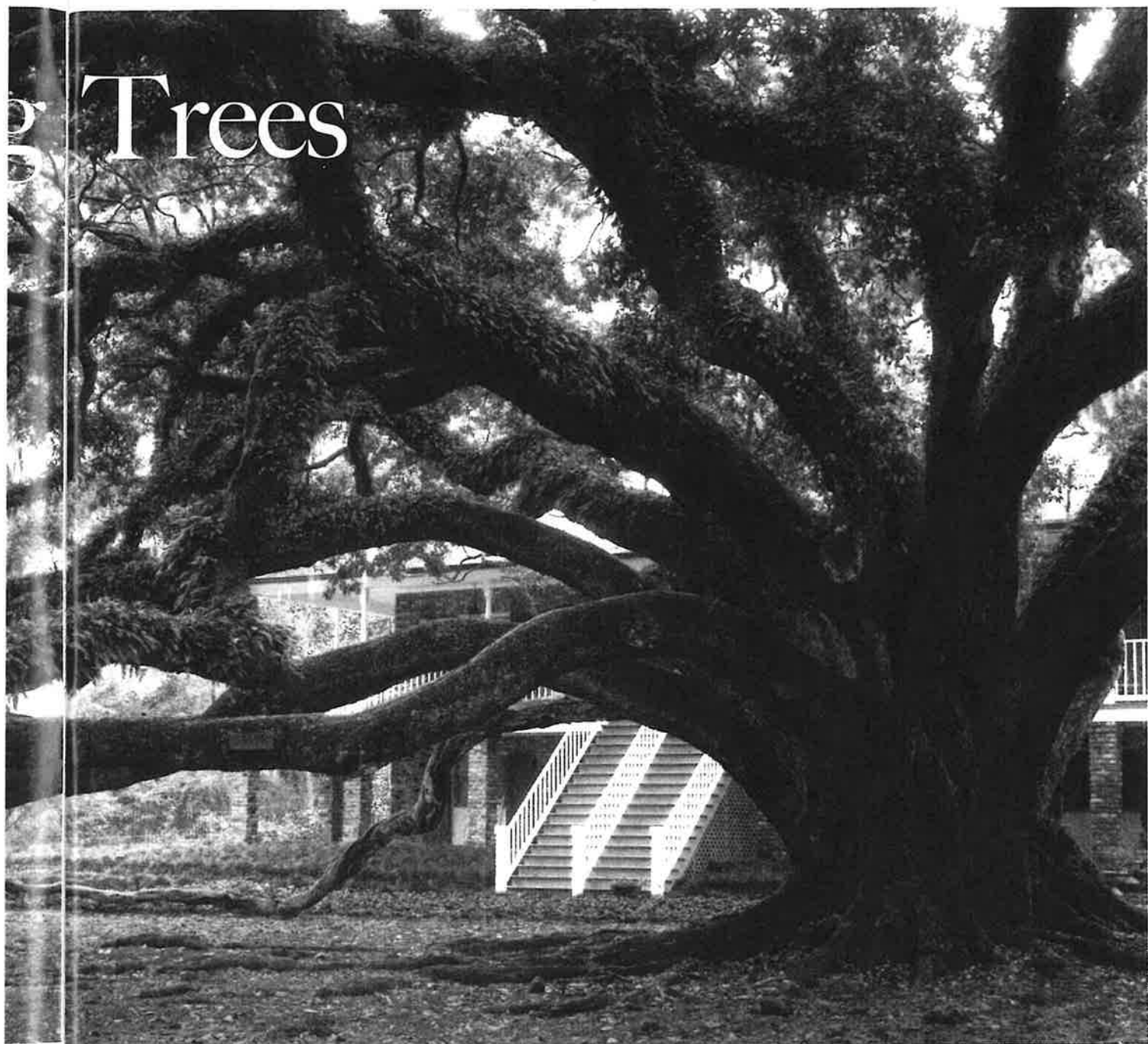
Whit Brounagh

Fortunately, we also gain wisdom from the lessons of recorded history, the scientific study of the past, and the cultural legacies of great minds. But such abstract lessons do not always have the power of experience. Who will best save for the winter, the newcomer from the tropics told to do so, or the survivor of many winters? In spite of the lessons from our historical culture, our lives and decisions seem to be dominated by our personal perspective on time, which rarely exceeds two generations before or after our own. Usually we focus on much shorter time spans, like election cycles, fiscal years, the work week, and the 15-minute break. This, we have discovered repeatedly, can be a problem when the natural world we depend on and cherish continues to operate on the long term plan.

One way to make the long term more tangible is to spend some of it with a big, old tree. Its hundreds or thousands of annual layers of wood are right there, just inches or feet from our touch, hidden by the girth that represents their sum. But we do not have to count the layers, or even see them, to appreciate that the being before us, simply by its existence, can teach us a thing or two about patience, endurance, the variable ticking of Mother Earth's many clocks, the consideration of nonhuman forms of life, and the freedom and virtue of thinking outside the box of human time.



AMERICAN FORESTS' Big Tree Program recognizes that such lessons can be learned from the relative ancients of all of America's tree species. Lessons from the 13-foot tall, skinner-than-a-fence post, but biggest-of-its-kind Geyer willow may be different, but no less valuable, than those of the biggest-tree-in-the-world giant sequoia. The National Register of Big Trees celebrates them all. But while the trees themselves live in cycles of tens to thousands of years, their status as national champions is re-evaluated every two years to keep you up to date on who the best time teachers are, here is a summary of big trees lost, found, and dethroned since 2008.



WWW.BIRLIGN.COM

The Class of 2010 includes a total of 733 champs and co-champs, representing 637 species and varieties of native and naturalized trees in the continental United States. These are almost the exact same figures as for the Class of 2008 but in the interim, 175 new champions or co-champions were crowned, while 164 were dethroned.

The 15 biggest species in the country, from the 1321-point giant sequoia to the 659-point sugar pine, have the same champions and rankings as in 2008, except for the new Coast Douglas-fir in Washington with a total of 804 points. There are 18 other species that have champions with more than 500 points, and 3 of those are new additions to that

lofty group. On the strength of its 12½-foot diameter, a new 590-point champion water tupelo in Hampton County, Virginia beat out the old champ by 74 points and moved its species from 30th to 19th place in the Register. It is now the fifth largest broadleaf tree in the country.

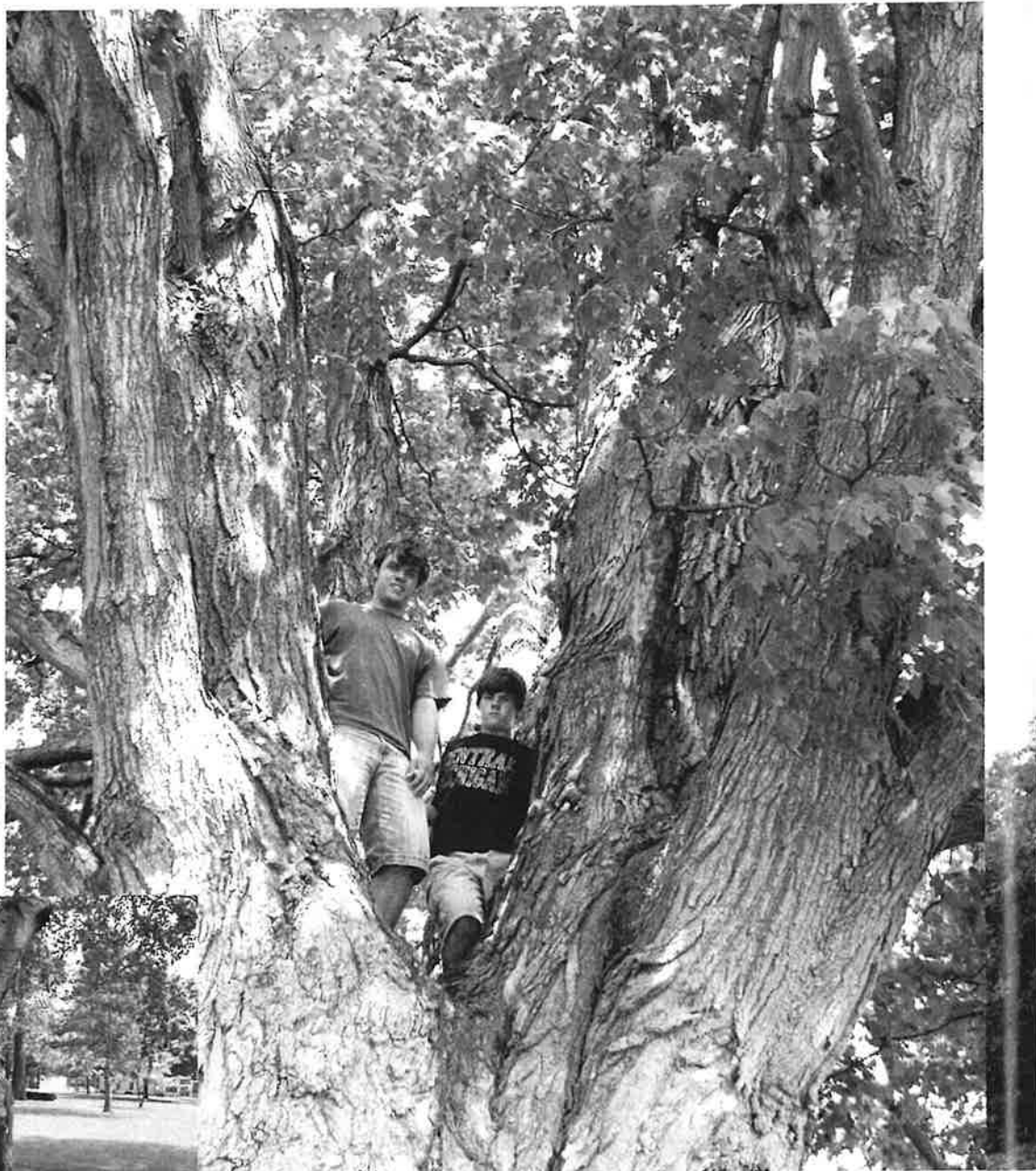
In St. Tammany Parish, Louisiana, the historic Seven Sisters Oak reclaimed the live oak title with a growth of 43 points. It is the only champion with a crown twice as wide as the tree is tall. You can go see the new 540-point eastern cottonwood champion at Alum Creek State Park just north of Columbus, Ohio. It is a well rounded monarch, with a 31-foot girth, 135-foot crown, and 136-foot height.

The famous Seven Sisters Oak of Louisiana reclaimed its champion title with a growth of 43 points.

The success of certain big-tree hunters shows us that luck is not everything when it comes to finding champion trees.

At right, one of Michigan's four new champions, the Black Maple.

THE PICCARD FAMILY



FRANK KAPUTA

Above, the new Paper Birch champion is nearly twice as big in height and crown spread, and has a trunk three times thicker than the last champion of its species.

Another 16 new champions in 11 states have between 400 and 500 points. Michigan has four of them: white willow, black maple, bur oak, and weeping willow. With the impact of Dutch Elm Disease, which recently cut down the Herbie elm of Maine, the largest elm in New England, champion elms tend to have short reigns. There have been five new American elm champions in each of the last five registers, including this one with the crowning of a 416-point tree in Ross County, Ohio. Long may it reign!

You might suspect that most new champions are relatively obscure, hard to identify, or are of a species that never gets to be of a head turning size. But tell that to Frank Barker and Sally Chadwick who found a 414-point eastern white pine in Cheshire County, New Hampshire. Or Greg Zell and Rod Simmons, nominators of the new 401-point American basswood growing in Charles County,

Maryland. Or Michigan big tree hunters Andrew and Noah Sawyer who found a 407-point weeping willow and a 312-point red mulberry in Berrien County, and a 379-point northern white-cedar in Ontonagon County. The success of certain big tree hunters shows us that luck is not everything when it comes to finding champion trees. Andrew Sawyer also located another 10 new champions for Michigan, including the familiar bur oak, witch-hazel, and poison-sumac. And let us once again recognize that indefatigable team of Byron Carmean and Gary Williamson, who added 19 champs from Virginia including the pussy willow, American hornbeam, winged elm, and the aforementioned water tupelo.

Other new champs in the 300-400 point range include such familiar trees as California black oak (392 points, Tuolumne County, California), southern magnolia (358 points, Sussex County, Virginia), balsam poplar (341 points, Cheshire County, New



WILL KOOMJIAN

Hampshire), and black cherry (338 points, Tazewell County, Virginia). A total of 22 new champs scored in the 300's, 35 in the 200's, 43 in the 100's, and 53 scored below 100 points.

In the featherweight sapling division, five new champions weighed in with 30-something points: littleleaf leucaena (38 points, Pima County, Arizona), Gregg ash (37 points, Big Bend National Park, Texas), purple-osier willow (33 points, Monroe County, New York), Virginia stewartia (33 points, Chesapeake County, Virginia), and birchleaf cercocarpus (30 points, Coconino National Forest, Arizona). Jeff Overby gets recognition for finding the newest, smallest big tree, a yellow anise-tree in Marion County, Florida with a proud but paltry 29 points. It is five feet taller, a hair skinnier, and has a crown spread one third narrower than the current tiniest champion, a Geyer willow that stands 10 feet short on the Fort Apache Indian Reservation in Arizona.

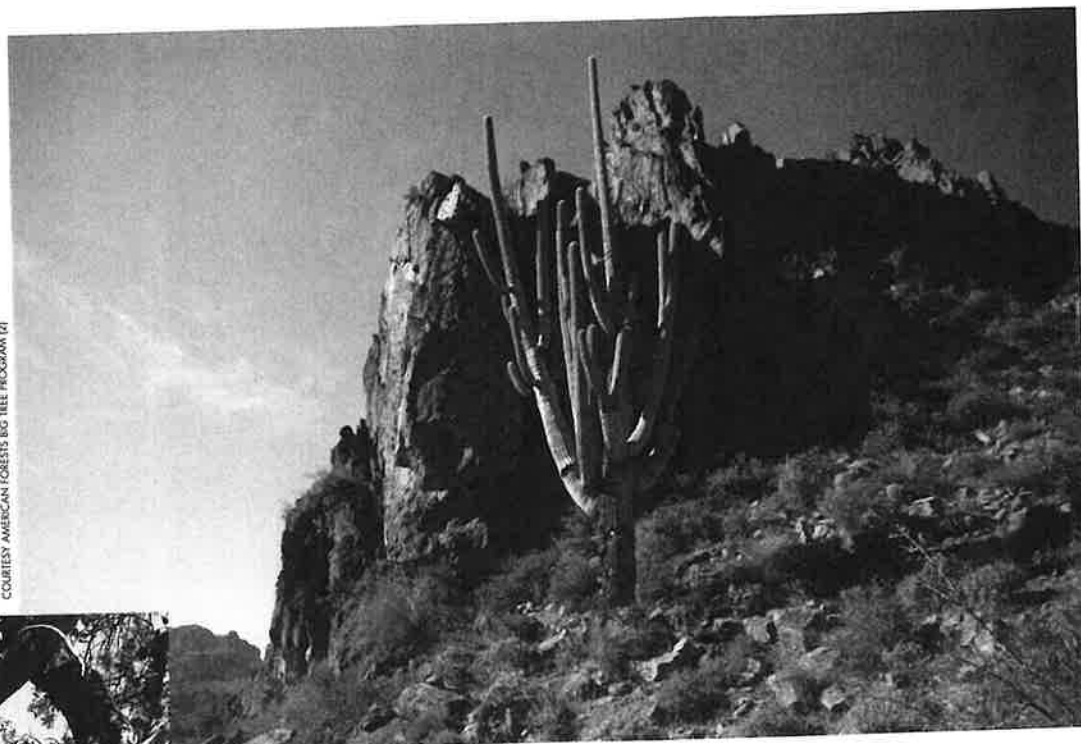
In the competition among states, Florida has regained its traditional number one ranking with 99 champions, though that number reflects the large number of trees restricted to the sunshine state, rather than average tree size. Arizona dropped to number two with 91 champions, followed by Texas (77), California (73), Virginia (68), Michigan (33), Georgia (30), and Washington (30). Maryland, with 23 champs, continues to show that you don't have to be a big state to have a lot of big trees. Nine other states are in the teens, and 28 have a single digit number. Hawaii, North Dakota, Oklahoma, Wyoming, and Rhode Island are still bereft of royalty, but with the discovery of a 188-point Virginia Pine in Sussex County, Delaware is back in the Register.

In any true contest where there are winners, there are also, unfortunately, losers. This year 31 former champions were knocked out by the 10-year rule. Like boxers that have to weigh in for each fight,

*The champion Pacific
Dogwood (above),
has added
to Oregon's royalty.*

Most dethroned
champs simply lost,
fair and square,
because of the
discovery of a tree
that was just a little
bit bigger.

COURTESY AMERICAN FORESTS BIG TREE PROGRAM [2]



Above right, the
Saguaro champion in
Arizona. Above, the
Curlleaf champion.

big tree champions now have to be remeasured within 10 years or the crown becomes available to other contenders. This prevents trees from holding the title after they have fallen just because no one had bothered to remeasure them. On the other hand, the 10-year rule certainly has the unintended consequence of dethroning some true living champions for the same reason. Among others, old growth red maple, coast

live oak, California red fir, and Pacific silver fir champions have been ousted for measurements predating the year 2000. Have these ex-champions actually fallen or have they just been neglected?

Most dethroned champs simply lost, fair and square, by the discovery of a tree that was just a little bit bigger. But sometimes relatively undeserving trees get to hold the title a while, usually after a champion dies and there are no contenders on file with state big tree coordinators. The 2008 181-point champion water-elm of Williamsburg, Virginia was an easy knockout for the new 288-point champ in Gilchrist County, Florida (although it is still 25 points shy of the 2006 champ of New Bern, North Carolina). It is no surprise that the 2008 paper birch "champion" of Johnson, Kansas, with just 107 points, did not hold its crown long. The new champion in Hartford County, Connecticut is nearly twice as big in height and crown spread, and has a trunk three times thicker. The new Douglas-fir champion in Washington actually outstrips the former champ by several hundred cubic feet, and is at least 550 years

old. The former champ, in the Jedediah Smith Redwoods State Park was dethroned after inspections showed that it had died of old age combined with health issues, including stem rot.

At least seven former champions have gone to that great forest in the sky, including a 435-point swamp chestnut oak in Big Oak State Park, Missouri; a 315-point eastern hemlock in Towns County, Georgia; a 829-point douglas-fir in Jedediah State Park, California; and a 69-point common pawpaw in Williamsburg, Virginia. Two imposter Fraser fir champions in Ohio were exposed as moderate-sized silver firs. And modern taxonomy caught up with the former champion holacantha, Texas pistache, and Biltmore, broadleaf, Columbia, and yellow hawthorns, which were disqualified because their species is no longer recognized as valid by botanists.

Every two years when the register is updated, some species are left without a champion. Others have thrones that have long been empty. This year we have the added effect of newly recognized species, including a number of oaks and hawthorns, that botanists have added to the list of native and naturalized trees of the continental U.S. This results in 221 species that currently have no champion, and are just waiting for you to go out and find one.

But even if you are not of the big tree hunting and measuring kind, you have everything to gain simply by going out and appreciating trees, big or small, old or young. They can all teach us a thing or two about living on Mother Earth.

Whit Bronaugh writes from Eugene, Oregon.
To view the 2010 National Register, visit
www.americanforests.org and click on Big Trees.

(MORE) TREES FROM SPACE

One of the most popular trees offered through our Historic Tree program has long been the Moon Sycamore, the tree that literally went to the moon and back when smoke-jumper-turned-astronaut Stuart Roosa wanted to bring a reminder of his Forest Service days along on the Apollo XIV mission. And who wouldn't find them fascinating—how many trees have been to space?

Well, now there's another member of the space-trees club. In late February, the shuttle Endeavor returned to Earth after a two-week mission to the International Space Station (ISS), and carried with it some unusual passengers: several willow shoots, grown on the ISS as part of a Canadian-led experiment. These were the first trees of any kind to be grown in the ISS. How did they manage to actually grow any kind of plant in space? Apparently with the help of the still-experimental Advanced Biological Research System, a box that allows



WWW.NASA.GOV (2)

Above, crew member Bob Thirsk shows off the space willows, seen up close at right.

researchers to carefully control the environmental factors within.

Not only were the willow shoots grown on board the ISS, but they were the subject of an experiment designed to help scientists understand what creates wood. By slightly bending the willow shoots, scientists hoped to trigger the formation of new wood, a process in which, it has been hypothesized, gravity plays a large

role. Where better to confirm this than the ISS, where gravity is not a factor at all. Scientists hope that by studying the space willows, they will see differences in the wood-creating process between the trees grown on earth and those grown in space.



There are plans for the ISS to host many more experiments, especially in biology. Who knows? Perhaps trees from space will soon be a commonplace thing, even here on Earth.

TRANSITIONS

The Big Tree Man

The world of Big Trees recently lost a champion. No, not a tree, but a person whose life was dedicated to forestry, environmental education, and especially Big Trees. **Art Cowley** passed away in March at the age of 77.

Art spent 35 years as a forest ranger working with public affairs and environmental education, and 30 years teaching environmental classes and workshops for students at the college level. To hold on to his own passion for forests and trees was never enough; he was most satisfied by sharing it with others.

Since 1995, Art had been California's coordinator for the Register of Big Trees, nominating 190 of the 318 Big Trees listed, and playing an important role in the discovery and nomination of many more. He was so committed to sharing the beauty of big trees that he printed a Big Tree Calendar each year. The best way to communicate the kind of per-

son Art was can be seen in his requested epitaph: "Now that I'm up high, I can see and find the biggest trees easier; I'll let you know where they are. May the world grow like a beautiful tree." Art will be missed, but his work for the environment and especially on behalf of Big Trees will remain a tribute to his memory for years to come.

The Champions' Champion

At this time, we also note the passing last summer of another great champion for Big Trees, **Elwood "Woodie" Ehrle**. In addition to serving as an influential and enthusiastic Michigan Big Tree Coordinator, over his distinguished career Ehrle was the president of the Michigan Botanical Club and Michigan Botanical Foundation, and gave nearly 20 years of service to Western Michigan University as provost and vice president for academic affairs and later professor of biology.

From White House to Green Jobs

Van Jones is at work on behalf of green jobs once again. America's leading green jobs advocate and popular author, Jones gave up his position as a White House adviser last September under fire from talk radio critics. In a September interview, Jones stated that green jobs, with an emphasis on clean energy, would both help Americans who are less fortunate, as well as provide a common ground for those on both sides of American politics.

Jones will soon be sharing those views at Princeton University, where he will teach a seminar on environmental and economic policy. He will also be working with the Center for American Progress as a senior fellow, developing strategies to encourage green technology in poor and rural areas, as well as ideas for a national renewable energy standard to improve the energy efficiency of American homes.



EARTHKEEPERS

**PEOPLE WHO MAKE A
DIFFERENCE
FOR TREES AND FORESTS**

Championing the Champs

Big tree state coordinators ensure that champions get the recognition they deserve.

by Sarah McVicar

As we mark the 70th anniversary of the National Register of Big Trees this spring, we would like to call special attention to the dedicated network of Big Tree State Coordinators who make it possible. State coordinators verify nominations for the National Register, and provide invaluable advice and feedback to the national program. We recently began profiling coordinators in our monthly e-newsletter, *Forestbytes*. Here is a larger sampling of these incredible people and the unique programs they coordinate in each of their states. For a complete list of state coordinators, or to sign up for *Forestbytes*, visit www.americanforests.org.

AMERICAN FORESTS

thanks our

Earthkeepers and

other Big Tree

Coordinators

nationwide for their

hard work and

dedication. Look out

for the upcoming

2010 National

Register of Big Trees

*Alabama Big Tree
Coordinator Brian
Hendricks (right)
wanted to be a forester
since the 8th grade.*

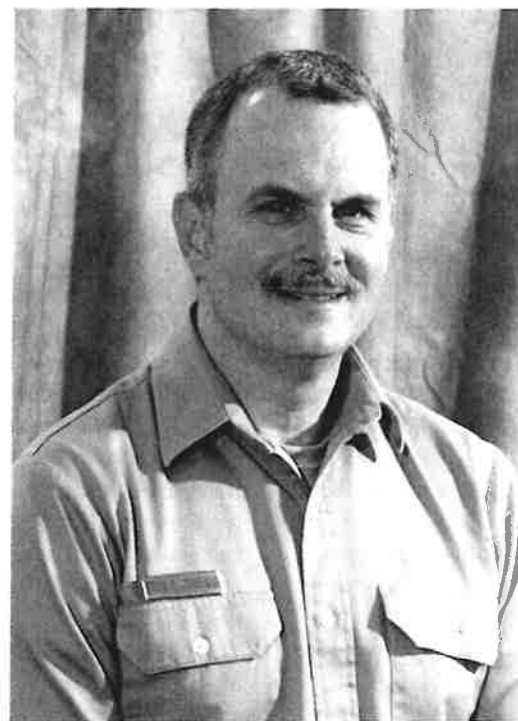
BRIAN HENDRICKS, ALABAMA

Alabama Champion Tree Coordinator Brian Hendricks wanted to be a forester since the 8th grade. Hendricks grew up in the small community of Carthage, Illinois, where he fondly remembers fishing, going for walks in nearby woods and identifying trees with his dad. "I was fascinated by the different species," he recalls.

Today, as state coordinator, Hendricks has devoted hard work and patience to rejuvenating Alabama's Champion Tree program. In addition to his regular duties overseeing Alabama's Forest Inventory & Analysis program, he took over the Champion Tree program in 2007. Hendricks – with the assistance of Auburn University Professor Lisa Samuelson – was charged with establishing a new list of eligible species, as new guidelines mandated that only naturalized or native Alabama trees be considered. Hendricks was pleased to find a positive reaction to this change, despite many lost spots on the state champion list.

Hendricks is a strong believer in public participation. "The nominators are the most important people," Hendricks says. "We wouldn't know about a tree if it weren't for them." Most of the state's nominations come from the public, he points out; in fact, many nominated trees are actually discovered in people's yards.

To celebrate the nominators, when a new champion is found Hendricks sends out a formal letter recognizing owner and nominator, and provides a marker for the nominator to place at the base of the tree; the marker is often presented in a public ceremony. Because much of the state is rural, Hendricks says, the ceremonies often get local media involved and become an important way to bring communities together.



In the future, Hendricks expects that Alabama's popular Champion Tree program will only get bigger. "We just have a lot of interest. Often owners who aren't even aware of the program initially become very excited when they discover they have a Champion Tree on their property." One of his favorite things, Hendricks says, is hearing that excitement in people's voices. "It's something they're proud and happy about," Hendricks says. "And they should be."

DON BERTOLETTE, ALASKA

Son of teacher parents who turned him on to the environment, he says, before the term was commonplace, Alaska Big Tree Coordinator Don Bertollette is a lifelong forester. Recently retired from more than 30 years with federal land management agencies – filling positions in such fields as forest engineering, resources inventory, and watershed management – and holding several forestry degrees, Don is also the co-founder of the Western Native Tree Society.

Even for someone with Bertollette's experience, though, the role of Alaska Big Tree Coordinator is no easy job. At over 586,000 square miles, Alaska

is by far the nation's largest state: Territorial waters included, Alaska is larger than California, Texas and Montana combined. It covers a vast range of climate stretching from wet, temperate rainforests to boreal forests and regions of such bitter cold that it is impossible for trees to grow. Very few roads provide access to this vast territory, which means that hunting down Big Trees presents a unique challenge and can require the use of plane, snowmobile or dogsled.

Luckily, Bertollette has approached the role

with determination, and is hard at work cultivating a vital network of foresters across the state. He also continues to advocate for greater consistency and accuracy in documenting champions. These biggest trees, he feels, should not be considered primarily for their economic value, but for their scientific value to geneticists and researchers, who require consistent, accurate measurements of the capabilities of various species.

For the future, Bertollette also hopes to put more effort into outreach, including connecting with local schools, offering more resources online, and helping teach the public about measuring trees. "You can't underestimate the educational function," Bertollette says of the program. He himself is learning as well. While he says he still feels comparatively new to the area, he has enjoyed the opportunity to gain a better sense of Alaska's trees.

Overall, Bertollette believes the Big Trees program is an excellent forum for helping people appreciate the role – spiritual, economic, social or biological – that trees play within society. "We encourage participation in all facets," Bertollette says.

**These biggest
trees...should not
be considered
primarily for their**



**economic value, but
for their scientific
value to geneticists
and researchers.**

Above, Don Bertollette measures a tree with a coworker.

Jennifer Teegarden (right) approaches the educational aspect of big trees by leading geocache hunts.



JENNIFER TEEGARDEN, MINNESOTA

In her first full year as Minnesota Big Tree Coordinator, Jennifer Teegarden has made a big impression. When Teegarden took on the job, she was relatively new to the Division of Forestry and the state's Big Tree Register. And since the register had been essentially inactive since 2005, she had a lot of catching up to do. Nevertheless, Teegarden found the time to get the register back on track, and even update the state program to coincide with the national program so that these Minnesota champions could receive national recognition. Her success can likely be attributed to her high energy, efficiency and dedication. "When I have a job to do, I'm going to give it my all," she says.

In coming years, Teegarden looks forward to getting familiar with each of the trees on Minnesota's register throughout the state's four biomes, which, she notes, includes regions from rare pockets of old growth forest to mosquito-infested swamps and other remote and difficult-to-access areas.

In the meantime, this former public school teacher is working to appeal to a younger generation. Teegarden seeks out ways to make the Register increasingly interactive and fun. One example is her idea of putting on a Big Tree Hunting Geocache, a high-tech treasure hunt where participants would use GPS to locate hidden geocache containers. In addition, Teegarden hopes to work more closely with Minnesota's roughly 100 School Forests, where teachers and students use an outdoor classroom to study core subjects like math, science and art.

Though her job and the publicity that comes with it can sometimes be nerve-wracking, Teegarden says her teaching experience – she would sometimes present to over 300 teenagers – helps her keep her cool. At the end of the day she is happy to have returned to her girlhood interest in the environment – especially forestry.

"I really love trees," she says. "When I go out and see a magnificent specimen I get excited, and I just hope to be able to share this excitement with others."

DONNA BALDWIN, MISSOURI

Donna Baldwin began at the Missouri Department of Conservation over 15 years ago, but her interest in the outdoors dates back even further. A Missouri native, Baldwin grew up in a heavily wooded region on the Lake of the Ozarks, where she recalls spending most of her time outdoors.

Since assuming the role of Big Tree Coordinator, Baldwin has come to see that one of her main challenges is overcoming her lack of forestry experience. "I rely heavily on the guidance of professional foresters in my state," she says. While she depends on her well-developed team of 85 foresters, Baldwin enjoys an occasional trip to the field for the chance to see the state champions up close, and takes pride in Missouri's several national champions.

And, forestry background or not, Baldwin has already accomplished a great deal in her short time with the Register. She has started collecting digital pictures of all newly crowned champions so that in the future Missouri can have an interactive, more digitized Register similar to the National Register compiled by AMERICAN FORESTS.

In addition, Baldwin is working to update all printed and electronic forms of Missouri's measuring guidelines to bring them in line with the guidelines used in the National Register. The Redbud tree is one case in point: She explains that the difference in the way forked trees are measured may mean that what ranks as a national champion with AMERICAN FORESTS may not be a champion at all in Missouri. Baldwin wants to eliminate such confusion for the public, and make the register as easy, comprehensive and accessible as possible.

After all, what she enjoys most about her job is the opportunity to make a difference – to stimulate people and see their excitement when they nominate a tree or discover a champion. "The landowners, the public, the foresters – they all get such a kick out of it," she says.

GLORIA VAN DUYNE, NEW YORK

Before becoming New York's Big Tree Coordinator, Gloria Van Duyne enjoyed a career that led her from New England and then across the globe to Australia, where she volunteered for a bird-banding group.

"You never know where things may take you," she says. In fact, she was a computer science major in undergrad school before realizing she wanted to work more closely with people.

Today Van Duyne pursues her interest in conservation at New York's Department of Environmental Conservation, where among her



many other jobs she coordinates the state's Big Tree program. While she holds the title of coordinator, Van Duyne is quick to point to the program's collaborative nature. "It's really a team effort. Just as a forest is made up of many trees, the success of our program depends on the many people who contribute to it." For example, she says she relies on the work of Environmental Education Assistant Carol Pawelek (the "true engine behind the program"), the foresters across the state with the training and ability to track down Big Trees, and, of course, the nominators.

"If it weren't for the public – meaning people interested in trees – we wouldn't have the register," Van Duyne says. Some New York big tree hunters, like Landis Arboretum Arborist Fred Breglia, have nominated many champions over several years. The public's interest in the program is especially pleasing to Van Duyne, who sees what a difference it can make for those who participate. "For some people it just takes one particular tree to get them interested and involved in the community and community forestry," she says.

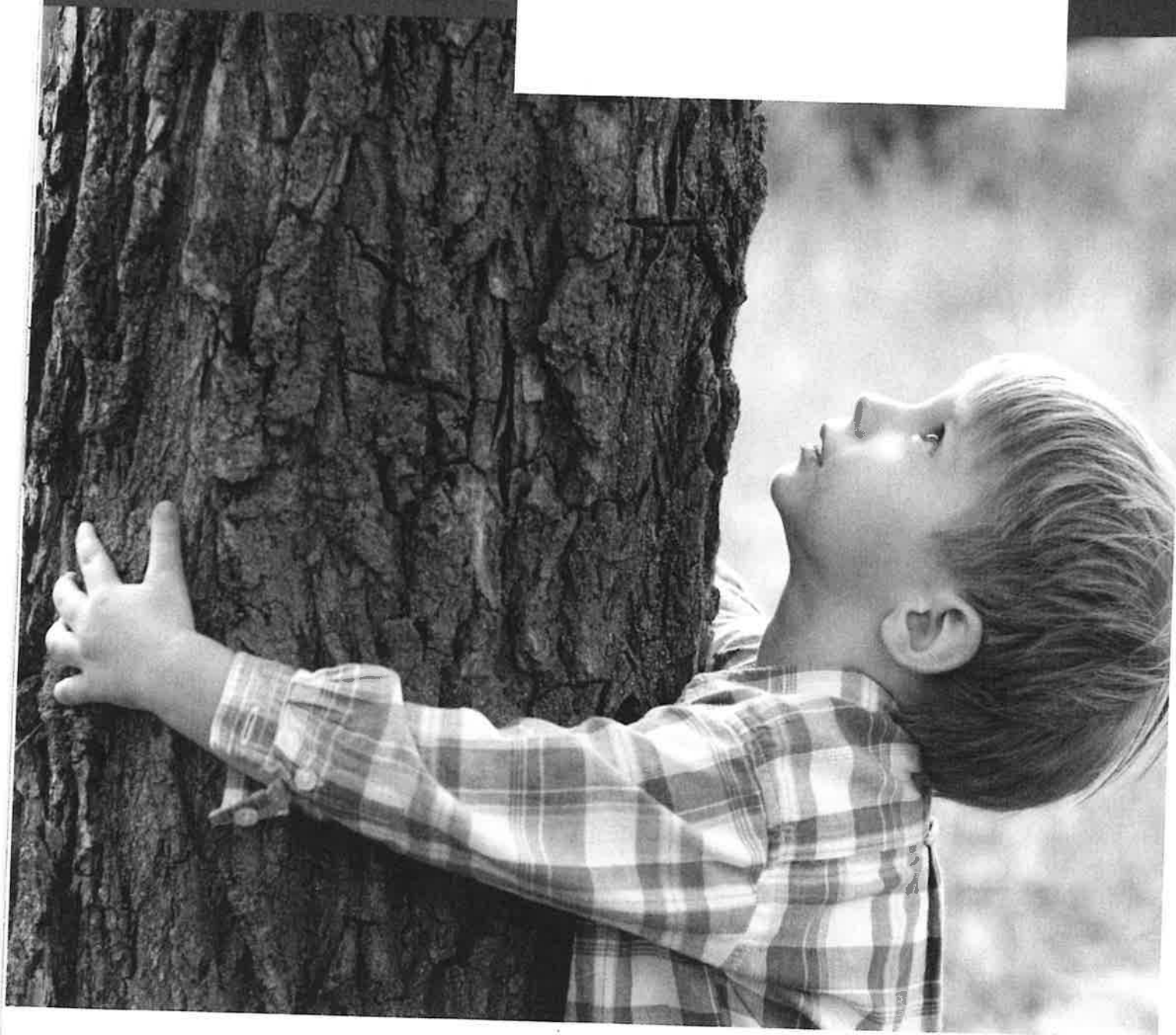
Despite the difficulty caused by shrinking staff in state agencies, especially in the lands and forests divisions, Van Duyne believes the New York State Register is in its best shape in years. "I'm just happy that the program can be run as it deserves," she says. New York's Register is certainly an example of teamwork paying off.

Sarah McVicar is the Communications Associate for AMERICAN FORESTS.



Big Tree Coordinators Donna Baldwin (top) and Gloria Van Duyne (above) are both quick to point out the others who work to make the program possible.

Trees are special.



Some because of where they are.
Some because of who planted them.
Some just because.

Trees reward us with life enhancing benefits: clear air, pure water, moderated heat and cold, and a healthy environment. We return the favor when we recognize the special trees in our communities.

At Davey, we support the AMERICAN FORESTS National Register of Big Trees program. By shining the spotlight on the specimens that are the largest of their species, we also draw attention to the importance of caring for trees.

Davey's skilled arborists can help to make sure that the trees we live with thrive, and make our communities greener, cleaner places to live, work and play.



The Davey Tree Expert Company
Proud Sponsor of American Forests'
National Register of Big Trees
1-800-445-TREE
www.davey.com

BUILDING ON 135 YEARS OF CONSERVATION ACTION & ADVOCACY

American Forests

SUSTAINABILITY:
Coming Soon To An
Arboretum Near You -38

**THE EVOLUTION OF
FIRE & FOREST POLICY -32**

**WHISKEY THAT PROTECTS
WATER & WOODS -26**



American Forests

VOL 116 NO 3

AUTUMN 2010

FEATURES

WOODS, WATER & WHISKEY 26

One company gives back to the natural resources that help make its product great. — by Gary Lantz

THE EVOLVING VIEW OF FIRE AND FOREST HEALTH 32

For more than a century, wildfire management has lagged well behind science. — by Rocky Barker

A BOLD NEW MISSION FOR ARBORETA: SUSTAINABILITY 38

How arboreta around the nation are making themselves even greener. — by W. Barksdale Maynard



DEPARTMENTS

TREE DOCTOR 2

Your tree care questions answered by our friends at The Davey Tree Expert Co.



EDITORIAL 7

Branching Out

— By Lynda Webster

COMMUNITIES 9

Touring the Trees

A road trip turned tree-touring adventure brings a pair of friends to discover Big Trees across the nation.

— By Kristina Herz

CLIPPINGS 13

News from the World of Trees

Endangered: The Everglades and Madagascar's Forests • Planting Native Trees (and Wishes) in All 50 States • The Khimki Forest • Anne Frank Tree Falls • NY State Champion Black Maple Saved

EARTHKEEPERS 45

A Forest Grows In Iowa

A family farm is working to restore Iowa's natural landscape and promote new methods of sustainable farming.

— By Jamie Hansen

KIDS PAGE 48

Join the Treetures to learn about how scientists study trees.



Cover: Fog surrounds a hackberry tree near the biostream at Scott Arboretum, Swarthmore College
Photo By Rebecca Roberts/ Scott Arboretum



Mixed Sources
Product group from well-managed forests, controlled sources and recycled wood or fibre
www.fsc.org Cert no. SGS-COC-004057
© 1996 Forest Stewardship Council





© SHIRANE CARTER/SS

COMMUNITIES

WORKING TOGETHER
FOR A
HEALTHIER ENVIRONMENT

Touring The Trees

One summer, two friends and an adventure among the nation's natural wonders.

Story by Kristina Herz • Photos Rudy Luna & Kristina Herz

**We had just
taken a bite of
the cake from
*Alice in
Wonderland*, and
there we were,
suddenly shrunk
down to a
fraction of our
size, surrounded
by familiar yet
intimidating
giants.**

The giant coastal redwoods of northern California were just one stop for Rudy Luna (right) and Kristina Herz.

Dusk was setting in as Rudy Luna, my incredible travel partner, and I followed what could have been a deer trail through the looming coastal redwood forests of Northern California. We had just taken a bite of the cake from *Alice in Wonderland*, and there we were, suddenly shrunk down to a fraction of our size, surrounded by familiar yet intimidating giants. Bright green, unfurling ferns were over four feet tall; tree trunks skyrocketed out of the ground to reach for the unseen heavens; a stump from a cut redwood tree was easily the size of my car; the duff from just one tree created a soft, five-foot-deep blanket around the trunk. Were we going the right way? A shrug from the park ranger and scribbled notes on the back of a receipt were not much to go on. But we had enough of an inkblot on our treasure map to know that we could

be just minutes from the largest coastal redwood in the United States, known to some as the Lost Monarch Tree. This giant Redwood (*Sequoia sempervirens*), nominated to AMERICAN FORESTS' National Register of Big Trees in 1998, is reportedly over 79 feet in circumference, 321 feet tall, and has a crown spread of 75 feet. How could we miss it?

I had found myself with a summer vacation for the first time in 15 years—a break before I began a masters program in Environmental Science at a university in Switzerland. What would you do with two months, 60 days, or 1,440 hours of free time? With some money stashed away for a rainy day, a car I would soon be selling, friends to say goodbye to, and an itch to see more of the United States, I quickly planned a trip around the country. But it wouldn't be any ordinary road trip. While on the road, I wanted to do something different and creative, something for



Over 12,000
miles later,
through 34 states,
in 60 days,
I have seen over



**30 national
champion, state
champion, and
potential future
champion trees.**

Kristina saw many remarkable trees, including the National Champion Live Oak (above right) and a giant cottonwood in Glacier National Park (above).



the environment. Instead of touring wacky roadside attractions, I decided to visit our ubiquitous natural wonders.

Over a year ago, I stumbled on the National Register of Big

Trees, a list of the largest trees of over 700 species in the U.S., including the Lost Monarch. The trees are nominated based on three standard measurements: trunk circumference (measured at four-and-a-half feet above the ground), average diameter of the spread of branches (crown spread), and the tree's height. Although you might expect age to be an important factor to include in this list, I was surprised to learn that age can only be accurately determined by cutting down the tree, which would obviously thwart the Register's theme of conservation and protection.

Thanks to AMERICAN FORESTS, who put me in contact with Big Tree State Coordinators, I was able to locate the selected trees on my list. The Big Tree program is managed in each state by a coordinator, often a volunteer, who is tasked with registering nominated trees and often finding new trees themselves. During my travels, I discovered that this program is so popular that a healthy competition exists between states, and even counties, to have the best tree specimens on the list. The incredibly dedicated Big Tree coordinators were easily accessible and beyond supportive, some of them even taking a full day to see the big trees with me, inviting me into their homes, or helping me find camping areas.

Over 12,000 miles later, through 34 states in 60 days, I have seen over 30 national champion, state

champion, and potential future champion trees.

Each of the trees has its own story. Some were small shade trees growing next to farmhouses built over 100 years ago; some were casually discovered during day hikes; some have been tenderly pampered by arborists in groomed parks; some are less than a foot in diameter, but still the largest of their species; others have been inadvertently protected from chainsaws by their inaccessible terrain.

The Lost Monarch tree also has its own story, an ancient history that we can only imagine. For me, that meant a grand adventure to better understand nature's living treasures. The lure of the unknown pushed Rudy and me ever deeper into the darkening forest beneath a giant canopy of ancient relics. My mind stumbled over itself as I tried to grasp the true proportions of the trees. They looked similar to those I had seen throughout my life, yet my eyes strained to see a single treetop. I could hug my arms around only the smallest saplings in the bunch, and I could fit half of my body into one groove in the bark. As we continued our search down the winding trail, we saw several giants that could have been the Lost Monarch, as described in my arcane instructions. Night was falling quickly, so we turned back toward the car, unsure if we had actually found the Lost Monarch.

But then we saw it: unmistakably the largest tree in the forest. It had a magnificent, thick trunk that split about 25 feet above the base. I ran to the foot of the tree, gleefully outstretching my arms to embrace the behemoth that enveloped me as I nestled into its mossy, deeply furrowed bark. Rudy photographed me with our exciting find, easily the 79 feet in circumference reported for the Lost Monarch. Even craning my neck to see the first set of branch-



es over 100 feet above the base, I knew there was no telling how tall the tree was. The crown spread was even more difficult to determine, as the upper branches were out of sight in the dense canopy and crowded by their smaller neighbors.

Had we found the king of kings among the pawns? Could a tree that may have been rooted for over 2,000 years possibly evade us? The beauty of this tree is its anonymity: it is not labeled, there is no direct trail to it, and its secret is kept by all who manage to find it. In the cover of nightfall, surrounded by his colossal friends and countless other distracting discoveries, he had—perhaps—eluded us. Or was he one of the several other giants we had encountered? We may never know.

Aside from a bad case of chiggers, nights spent shivering in the north or sweating in the south, and long stretches of sleepless driving, this road trip has been the most amazing thing I have done in my life. Sitting beneath a primeval tree that has seen a world so different from mine, watching a meteor shower in the cloudless skies of the Mojave Desert, and awaking to a fresh awe-inspiring landscape each morning has stretched my understanding of who I am, and changed my disposition toward life.

A road trip is a great vehicle for spontaneous adventure, a way to observe the marvelous secrets held by our country's rich natural lands, to get to know a travel partner, and above all, to better understand yourself. I now know for certain that whenever possible, I want to be where the forest is dark and lush, where the water drips freely from leaves high above, the oxygen is rich, and the muck sucks at your ankles.

Whether in your front yard or deep in the woods, trees and the habitats they support are

essential for a healthy ecosystem and our quality of life.

Though the Big Tree program is an extensive inventory of our best and mightiest trees, the list holds no legal standing, leaving many of these trees vulnerable to an uncertain future. I encourage you to take an active role in helping protect these living American monuments. You can start by contacting your state Big Tree Coordinator, thanking them for their dedication, and asking them to help you locate a registered champion in your neighborhood. The more we spread appreciation of our local trees, the less likely we are to lose them. Perhaps you will even find a champion of your own to nominate for the National Register of Big Trees. As the Lost Monarch's story reminds us, exploring our beautiful forests and the secrets they hold is unfailingly enjoyable and fulfilling.

Kristina Herz's entire trip is documented on her blog at www.marshmucking.blogspot.com.



Among the many trees Kristina hugged this summer were the Lost Monarch Tree (above left) and the Maryland State Champion White Oak.

View the National Register or nominate your own trees at

www.americanforests.org/resources/bigtrees/

You can also find state registries and coordinators at

www.americanforests.org/resources/bigtrees/coordinators.php

NY STATE CHAMPION BLACK MAPLE SAVED

Not long ago, the city of Marcellus, New York planned to chop down a black maple to make way for the construction of a new sidewalk and curb. We're sad to see any tree fall, especially healthy ones, but this was no ordinary black maple: It was the state black maple champion.

When Tim and Debbie Golick, who share their front yard with the champion tree, learned about its upcoming demise, they were determined to prevent it. They obtained over 100 signatures on petitions to save the tree, and got the local community involved in its preservation. But Mayor John Curtin decided to go ahead with the construction, citing the city's "walkability" as one of the biggest factors contributing to its quality of life.

After receiving a cool reception from the Village Board at their June meeting where the Golicks respectfully presented their petitions, Debbie Golick contacted Sheri Shannon of AMERICAN FORESTS. Acting Executive Director Dr. Gerry Gray wrote a compelling letter to the mayor of Marcellus, describing why this living tree was both culturally and financially more valuable to the city than a sidewalk would be. He wrote:

"From cooling its neighborhood and saving money on energy costs, to filtering



The New York champion black maple is now safe from development.

air pollutants and improving air quality, this champion tree represents all the good work trees do for the environment. Long-established and big trees in particular clean the air and improve water quality, help offset carbon emissions, provide habitat to wildlife, reduce stormwater runoff, and raise real-estate value."

Eventually, thanks to the combined efforts of the citizens of Marcellus, the Golicks, local media, AMERICAN FORESTS, and a host of others—including arborist Daniel Deyle, John Graham of the NY

State Department of Environmental Conservation, Arthur Brooks of Brooks Forestry & Resource Management, and attorney Thomas J. Murphy—the tree was saved. The mayor forestalled plans to cut down the tree, and instead the sidewalk will simply be built around it. The Golicks have also assumed legal responsibility for the tree, which is in the village right of way, releasing the Village of Marcellus from liability for it.

THE LAST TIME YOU'LL USE THIS MAP

The United States Department of Agriculture (USDA) is working with Oregon State University's Prism Climate Group to update the official Hardiness Zone map. The current map from 1990 will be replaced by a high-tech, internet-savvy map with greater detail, letting gardeners zoom on their locations. After analysis of temperatures and elevation datasets, microclimates will also be mapped.

The USDA plans to enhance the map's accuracy and practicality with important climate measurements like air-flow patterns, effects of bodies of water, and lengths of cold spells.

You can access the current official map at www.usna.usda.gov/Hardzone/.

T R A N S I T I O N S

Balog Receives Heinz Award

Among the 10 recipients of the 2010 Heinz Awards is environmental and nature photographer **James Balog**, recognized for his current project Extreme Ice Survey (EIS), which chronicles the melting of glaciers worldwide due to global climate change. The project uses 39 cameras, adapted to withstand harsh weather conditions, that take photos every hour during daylight in each location. Balog's work was also featured in the Spring 2002 issue of this magazine, in the article "A Fine Obsession: A Photographer Makes the Case For a Focus on Big Trees."

The Heinz Awards, established in 1993 by Teresa Heinz in memory of her late husband U.S. Senator John Heinz, recognize the remarkable achievements of individuals in areas including Arts and Humanities, Technology, and the Environment.

George Ware Obituary

Dr. George Ware, a well-respected dendrologist, passed away this summer. He received a Ph.D. in forest ecology from the University of Wisconsin-Madison, and was a professor of botany,

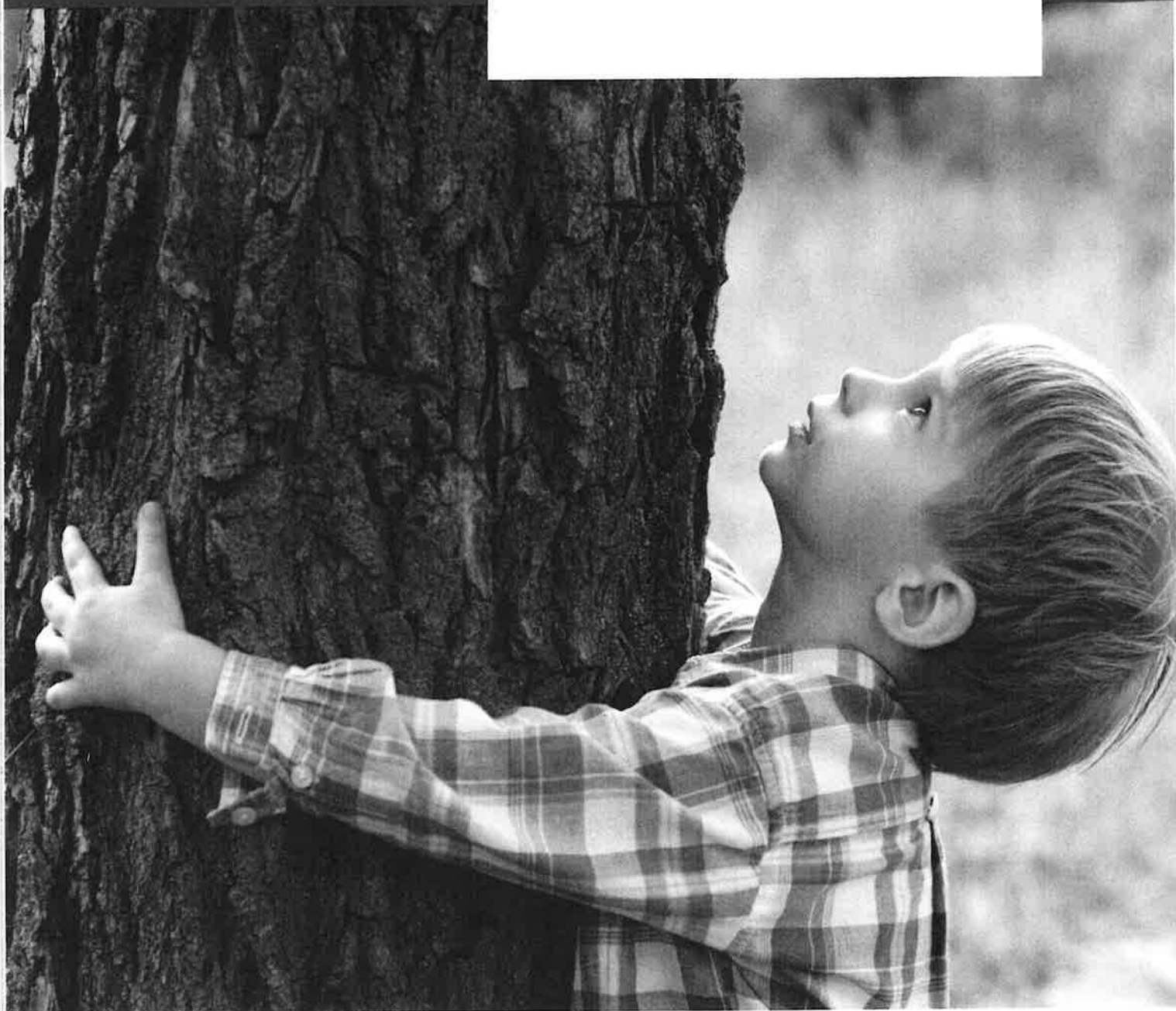
ecology, dendrology, and conservation at several universities. In 1968 Dr. Ware joined the Morton Arboretum as a dendrologist, and later became the research director. During his lifetime he developed several variants of trees, including American elms, maples, poplars, and mulberries, all of which show promise for growth in metropolitan areas. AMERICAN FORESTS presented its Urban Forestry Research Award to Dr. Ware in 1994.

Mike Robinson Awarded

We congratulate forester **Mike Robinson** for his recognition from the International Society of Arboriculture (ISA). He was presented with a True Professionals of Arboriculture award, a distinction ISA started in 2009 to acknowledge arborists who increase public understanding of professional arboriculture.

Robinson has worked nearly three decades as a forester in northern Florida, receiving several awards and other distinctions. Robinson is also noted for his work in community outreach. His work with The TREE Coalition was featured in *American Forests* magazine.

Trees are special.



**Some because of where they are.
Some because of who planted them.
Some just because.**

Trees reward us with life enhancing benefits: clear air, pure water, moderated heat and cold, and a healthy environment. We return the favor when we recognize the special trees in our communities.

At Davey, we support the AMERICAN FORESTS National Register of Big Trees program. By shining the spotlight on the specimens that are the largest of their species, we also draw attention to the importance of caring for trees.

Davey's skilled arborists can help to make sure that the trees we live with thrive, and make our communities greener, cleaner places to live, work and play.



The Davey Tree Expert Company
Proud Sponsor of American Forests'
National Register of Big Trees
1-800-445-TREE
www.davey.com